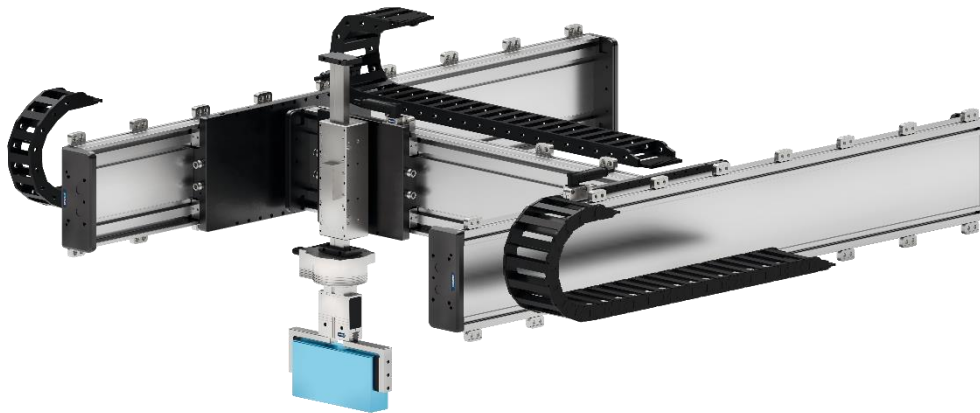


Linear handling gantry for prismatic cells

Customized solution



Hand in hand for tomorrow



Linear handling for prismatic cells

Multi-axis system with attached rotary unit and gripper for handling of prismatic cells

Your advantages and benefits

- **Process-reliable handling** of single prismatic cells
- **XYZ gantry system** with linear direct drive axes to ensure highest dynamics
- **Scalable solution** enables adaption of the application to specific projects

Technical data

- | | |
|-----------------------------|-----------------------|
| • Max. surface force (cell) | 0.5 N/mm ² |
| • Workpiece weight | 3 kg |
| • Cycle time (per cell) | 1.5 s |
| • Repeat accuracy | ±0.01 mm |

Please contact us with your individual requirement.
You can reach the E-Mobility team at:

Hotline E-Mobility +49-7133-103-3014
E-Mobility@de.schunk.com