



Superior Clamping and Gripping



## Product Information

Fluid feed-through module SWO-F

# SWO-F

Fluid feed-through module

## Robust. Reliable. Flexible.

### Optional modules SWO-F

Optional modules for feeding through various media for SCHUNK quick-change systems.

#### Field of application

Process-reliable feeding through of a wide range of signals and media for supply, control, and monitoring of customized tools.

#### Advantages – Your benefits

**Fits perfectly** for simple combination with SCHUNK change systems

**Wide range of different variants** for feeding through of various electric and fluid media

**Module variety** the suitable module for any size of SCHUNK change systems

**Connector variants with radial, axial, and side cable outlet** for a low interfering contour in restricted spaces

**Combination of several optional modules** for maximum flexibility of the change system

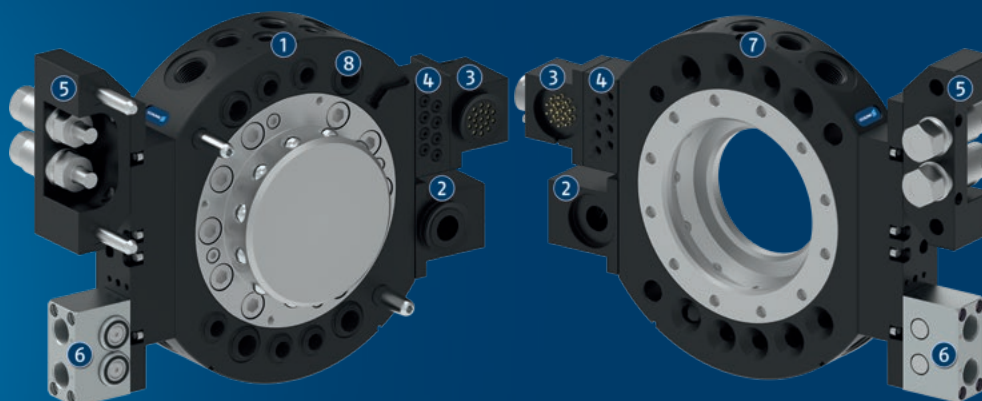
**Minimum wear** for a high number of change cycles and a long service life

**Customer-specific designs available on request** the suitable solution for any application

**Cable connector, cable extensions and protection covers available on request** for a comprehensive complete solution from one source



## Application example



- ① **Quick-change master SWK 160**  
with lock monitoring
- ② **SWO-V34**  
Optional module for feed-through  
of vacuum
- ③ **SWO-R19W**  
Optional module for transmission  
of electrical, digital signals
- ④ **SWO-P8M5**  
Optional module for extending the  
pneumatic air feed-throughs
- ⑤ **SWO-F2HG14A**  
Optional module for feed-through  
of hydraulic oil
- ⑥ **SWO-FG2**  
Optional module for transmission  
of gases and liquids
- ⑦ **Quick-change adapter SWA 160**
- ⑧ **Integrated air feed-through with  
radial connections**  
for pneumatic supply of customer  
tools

### SCHUNK offers more ...

The following components make the product even more productive – the suitable addition for the highest functionality, flexibility, reliability, and controlled production.



Quick change system



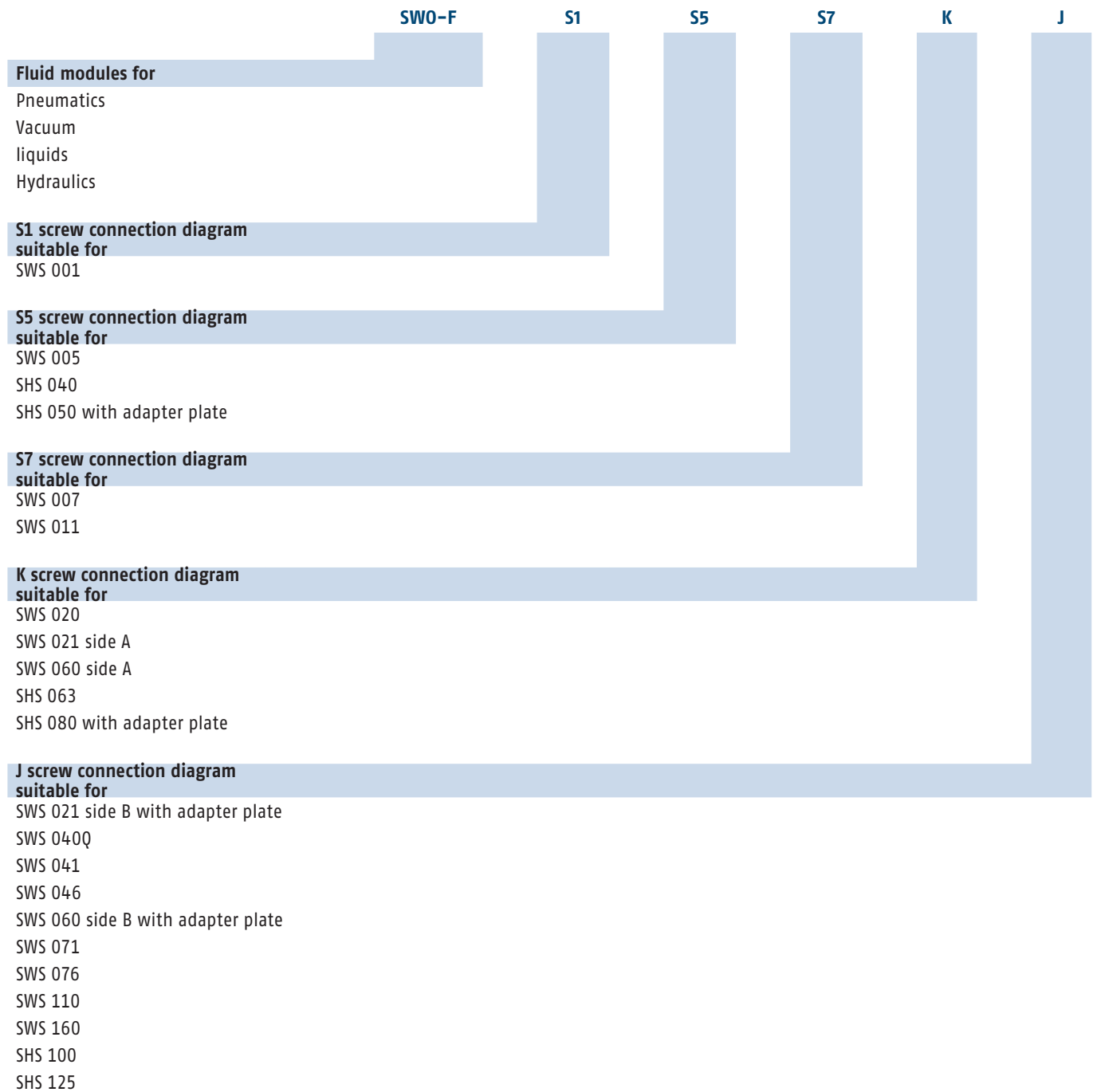
Manual change system



Pallet change system

① For more information on these products can be found on the following product pages or at [schunk.com](http://schunk.com).

## Overview of fluid modules and mounting pattern

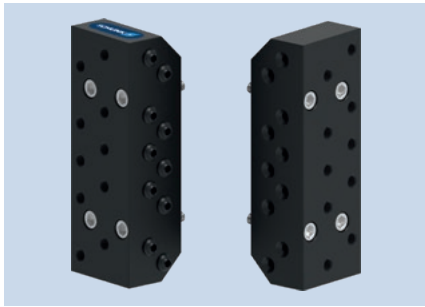


Special designs with modified seals or lubrication are available on request



# SWO-F P05

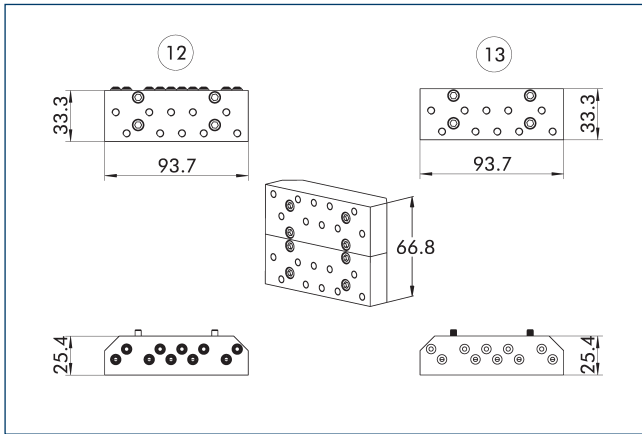
Fluid feed-through module



## Technical data

Description		SWO-P05-K	SWO-P05-A
ID		9936895	9936896
Suitable on		Quick-change master	Quick-change adapter
Screw connection diagram		J	J
Transmission type		Pneumatics	Pneumatics
Weight	[kg]	0.2	0.21
Min./max. ambient temperature	[°C]	5/60	5/60
No. of fluid feed-throughs		10	10
Connection		M5	M5
Type of medium		Air, vacuum	Air, vacuum
Volumne flow KV	[m³/h]	0.21	0.21
Max. operating pressure	[bar]	8	8
Outlet connection		radial	radial
Special properties		-	-

## Combination SWO-P05-K and SWO-P05-A

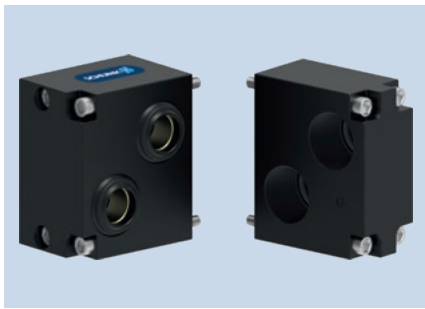


12 Master side

13 Adapter side

# SWO-F P12A

Fluid feed-through module

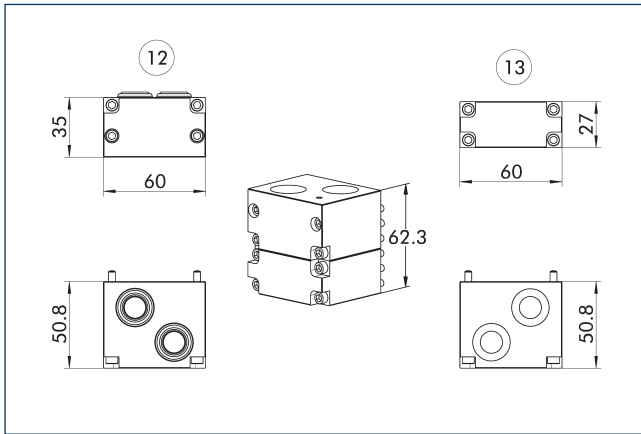


## Technical data

Description		SWO-P12A-K	SWO-P12A-A	SWO-P12L-A	SWO-P12R-A
ID		9949339	9957033	9949340	9951848
Suitable on		Quick-change master	Quick-change adapter	Quick-change adapter	Quick-change adapter
Screw connection diagram		J	J	J	J
Transmission type		Pneumatics	Pneumatics	Pneumatics	Pneumatics
Weight	[kg]	0.26	0.19	0.25	0.26
Min./max. ambient temperature	[°C]	5/60	5/60	5/60	5/60
No. of fluid feed-throughs		2	2	2	2
Connection		G1/2"	G1/2"	G1/2"	G1/2"
Type of medium		Air, vacuum	Air, vacuum	Air, vacuum	Air, vacuum
Volumne flow KV	[m³/h]	6.4	6.4		
Max. operating pressure	[bar]	8	8	8	8
Outlet connection		axial	axial	radial and tangential	radial and tangential
Special properties		-	-	radially and laterally for each port	radially and laterally for each port



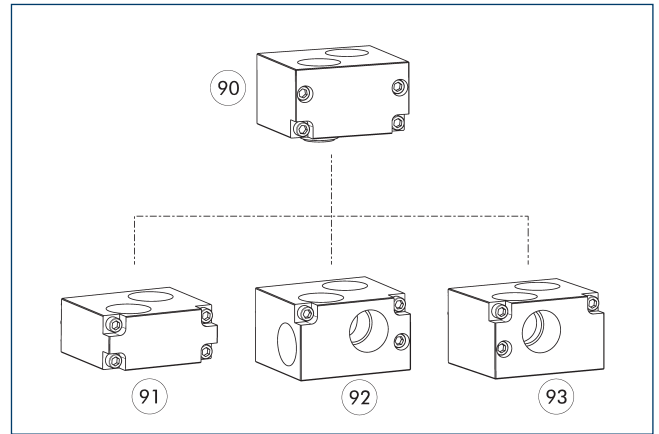
## Combination SW0-P12A-K and SW0-P12A-A



12 Master side

13 Adapter side

## Combination options P12A



90 SW0-P12A-K

91 SW0-P12A-A

92 SW0-P12L-A

93 SW0-P12R-A

# SWO-F P14

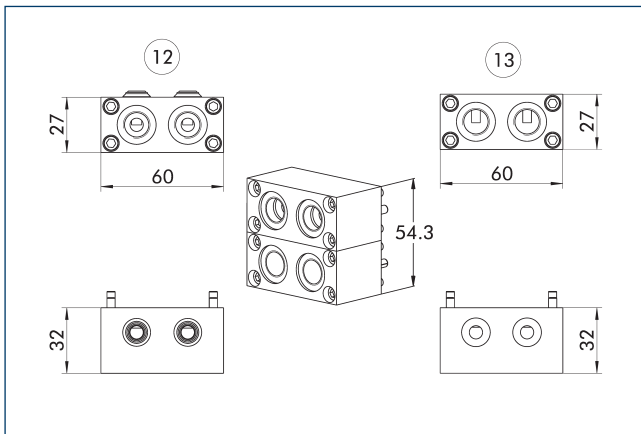
Fluid feed-through module



## Technical data

Description		SWO-P14-K	SWO-P14-A
ID		9935830	9935825
Suitable on		Quick-change master	Quick-change adapter
Screw connection diagram		J	J
Transmission type		Pneumatics	Pneumatics
Weight	[kg]	0.14	0.13
Min./max. ambient temperature	[°C]	5/60	5/60
No. of fluid feed-throughs		2	2
Connection		G1/4"	G1/4"
Type of medium		Air, vacuum	Air, vacuum
Volumne flow KV	[m³/h]	0.88	0.88
Max. operating pressure	[bar]	8	8
Outlet connection		radial	radial
Special properties		-	-

## Combination SWO-P14-K and SWO-P14-A



12 Master side

13 Adapter side

# SWO-F P18

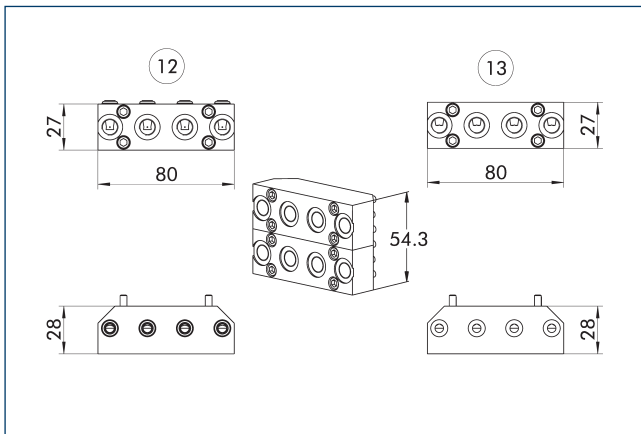
Fluid feed-through module



## Technical data

Description		SWO-P18-K	SWO-P18-A
ID		9935826	9935827
Suitable on		Quick-change master	Quick-change adapter
Screw connection diagram		J	J
Transmission type		Pneumatics	Pneumatics
Weight	[kg]	0.15	0.15
Min./max. ambient temperature	[°C]	5/60	5/60
No. of fluid feed-throughs		4	4
Connection		G1/8"	G1/8"
Type of medium		Air, vacuum	Air, vacuum
Volumne flow KV	[m³/h]	0.55	0.55
Max. operating pressure	[bar]	8	8
Outlet connection		radial	radial
Special properties		-	-

## Combination SWO-P18-K and SWO-P18-A

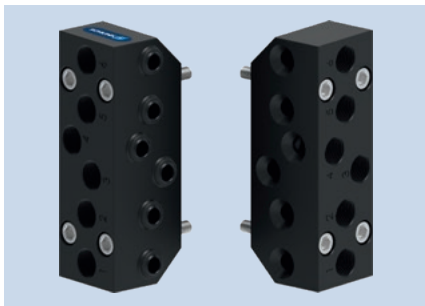


12 Master side

13 Adapter side

# SWO-F P186

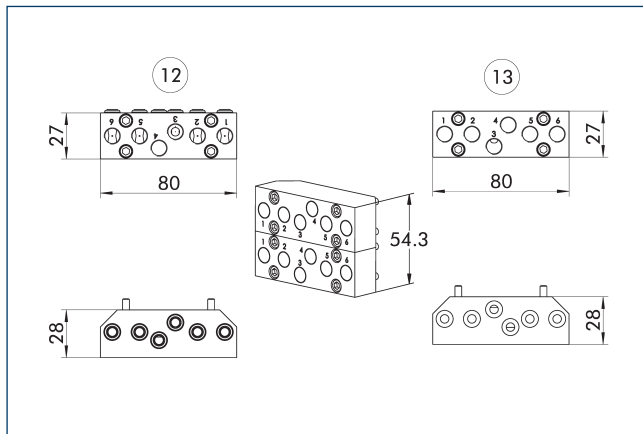
Fluid feed-through module



## Technical data

Description		SWO-P186-K	SWO-P186-A
ID		9939024	9939025
Suitable on		Quick-change master	Quick-change adapter
Screw connection diagram		J	J
Transmission type		Pneumatics	Pneumatics
Weight	[kg]	0.14	0.16
Min./max. ambient temperature	[°C]	5/60	5/60
No. of fluid feed-throughs		6	6
Connection		G1/8"	G1/8"
Type of medium		Air, vacuum	Air, vacuum
Volumne flow KV	[m³/h]	0.55	0.55
Max. operating pressure	[bar]	8	8
Outlet connection		radial	radial
Special properties		SWO-P186-K and SWO-P186A-K are each compatible with SWO-P186-A and SWO-P186A-A.	SWO-P186-A and SWO-P186A-A are each compatible with SWO-P186-K and SWO-P186A-K.

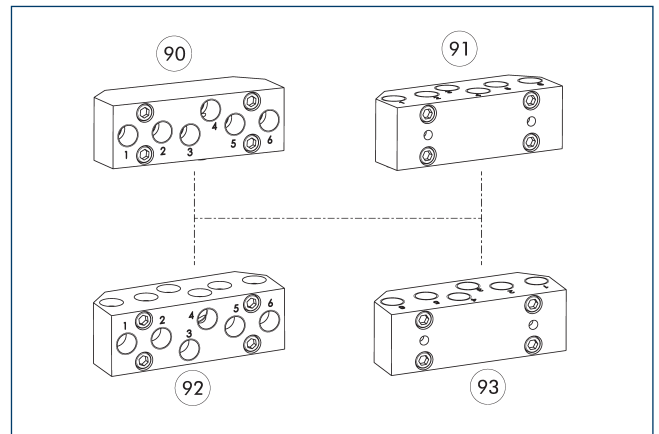
## Combination SW0-P186-K and SW0-P186-A



12 Master side

13 Adapter side

## Combination options P186 and P186A



90 SW0-P186-K

91 SW0-P186A-K

92 SW0-P186-A

93 SW0-P186A-A

# SWO-F P186A

Fluid feed-through module

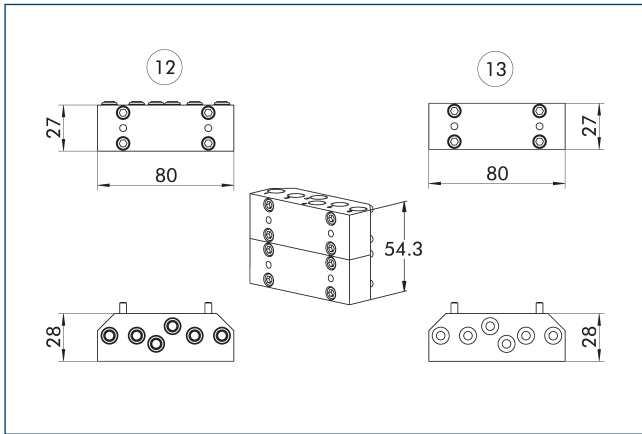


## Technical data

Description		SWO-P186A-K	SWO-P186A-A
ID		9948321	9948322
Suitable on		Quick-change master	Quick-change adapter
Screw connection diagram		J	J
Transmission type		Pneumatics	Pneumatics
Weight	[kg]	0.16	0.16
Min./max. ambient temperature	[°C]	5/60	5/60
No. of fluid feed-throughs		6	6
Connection		G1/8"	G1/8"
Type of medium		Air, vacuum	Air, vacuum
Volumne flow KV	[m³/h]	0.55	0.55
Max. operating pressure	[bar]	8	8
Outlet connection		axial	axial
Special properties		SWO-P186-K and SWO-P186A-K are each compatible with SWO-P186-A and SWO-P186A-A.	SWO-P186-A and SWO-P186A-A are each compatible with SWO-P186-K and SWO-P186A-K.



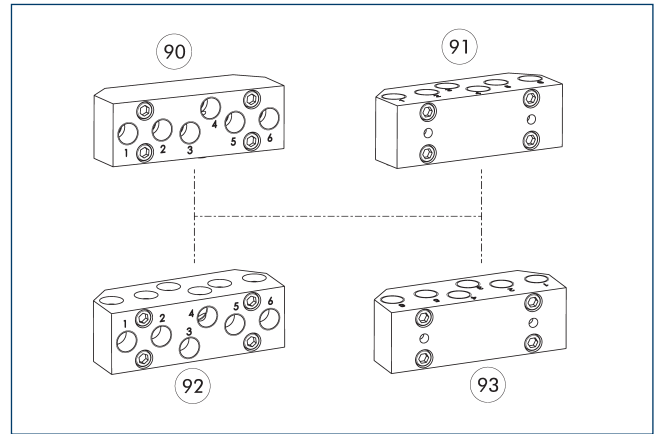
## Combination SWO-P186A-K and SWO-P186A-A



12 Master side

13 Adapter side

## Combination options P186 and P186A



90 SWO-P186-K

91 SWO-P186A-K

92 SWO-P186-A

93 SWO-P186A-A

# SWO-F P188

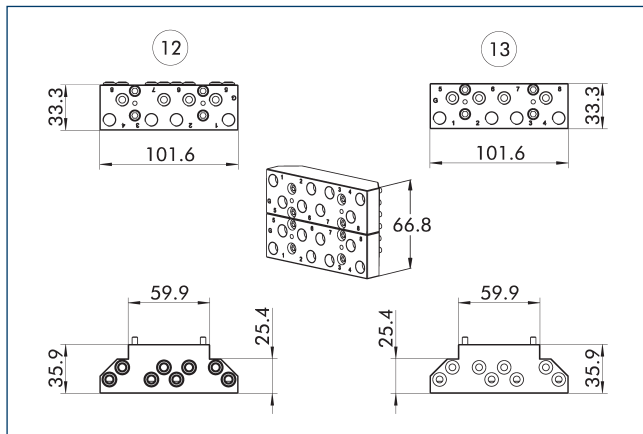
Fluid feed-through module



## Technical data

Description		SWO-P188-K	SWO-P188-A
ID		1318443	1318445
Suitable on		Quick-change master	Quick-change adapter
Screw connection diagram		J	J
Transmission type		Pneumatics	Pneumatics
Weight	[kg]	0.24	0.24
Min./max. ambient temperature	[°C]	5/60	5/60
No. of fluid feed-throughs		8	8
Connection		G1/8"	G1/8"
Type of medium		Air, vacuum	Air, vacuum
Volumne flow KV	[m³/h]	0.55	0.55
Max. operating pressure	[bar]	8	8
Outlet connection		radial	radial
Special properties		-	-

## Combination SWO-P188-K and SWO-P188-A

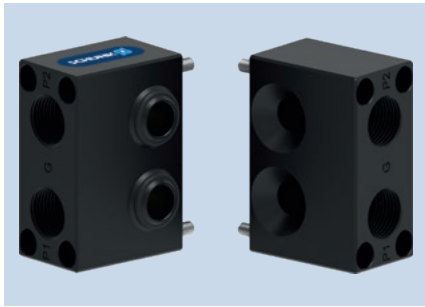


12 Master side

13 Adapter side

# SWO-F P238

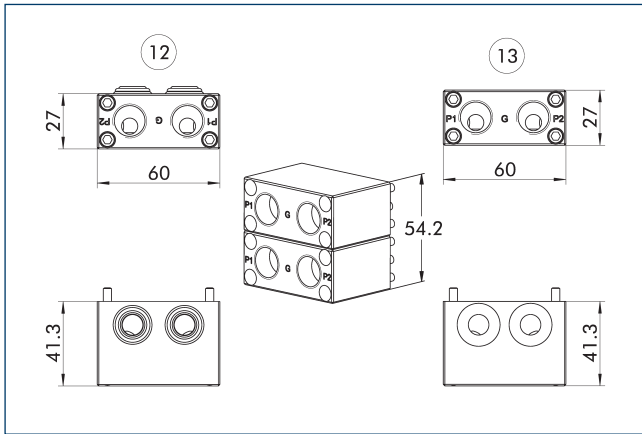
Fluid feed-through module



## Technical data

Description		SWO-P238-K	SWO-P238-A
ID		9940578	9940580
Suitable on		Quick-change master	Quick-change adapter
Screw connection diagram		J	J
Transmission type		Pneumatics	Pneumatics
Weight	[kg]	0.15	0.14
Min./max. ambient temperature	[°C]	5/60	5/60
No. of fluid feed-throughs		2	2
Connection		G3/8"	G3/8"
Type of medium		Air, vacuum	Air, vacuum
Volumne flow KV	[m³/h]	126	126
Max. operating pressure	[bar]	8	8
Outlet connection		radial	radial
Special properties		-	-

## Combination SWO-P238-K and SWO-P238-A



12 Master side

13 Adapter side

# SWO-F P38A

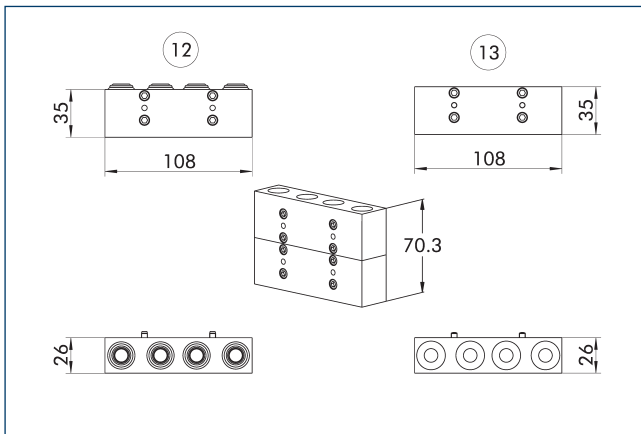
Fluid feed-through module



## Technical data

Description		SWO-P38A-K	SWO-P38A-A
ID		9937842	9937843
Suitable on		Quick-change master	Quick-change adapter
Screw connection diagram		J	J
Transmission type		Pneumatics	Pneumatics
Weight	[kg]	0.21	0.21
Min./max. ambient temperature	[°C]	5/60	5/60
No. of fluid feed-throughs		4	4
Connection		G3/8"	G3/8"
Type of medium		Air, vacuum	Air, vacuum
Volumne flow KV	[m³/h]	2.1	2.1
Max. operating pressure	[bar]	8	8
Outlet connection		axial	axial
Special properties		-	-

## Combination SWO-P38A-K and SWO-P38A-A



⑫ Master side

⑬ Adapter side

# SWO-F P48

Fluid feed-through module

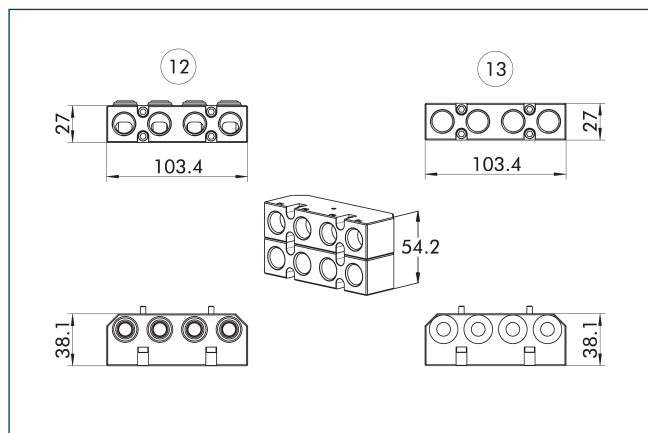


## Technical data

Description		SWO-P48-K	SWO-P48-A
ID		9961330	9961331
Suitable on		Quick-change master	Quick-change adapter
Screw connection diagram		J	J
Transmission type		Pneumatics	Pneumatics
Weight	[kg]	0.24	0.21
Min./max. ambient temperature	[°C]	5/60	5/60
No. of fluid feed-throughs		4	4
Connection		G3/8"	G3/8"
Type of medium		Air, vacuum	Air, vacuum
Volumne flow KV	[m³/h]	2.1	2.1
Max. operating pressure	[bar]	8	8
Outlet connection		radial	radial
Special properties		For mounting on SWS-040 and SWS-041, an additional spacer (ID 9960869) is required.	For mounting on SWS-040 and SWS-041, an additional spacer (ID 9960869) is required.



## Combination SWO-P48-K and SWO-P48-A



12 Master side

13 Adapter side

# SWO-F P8M5

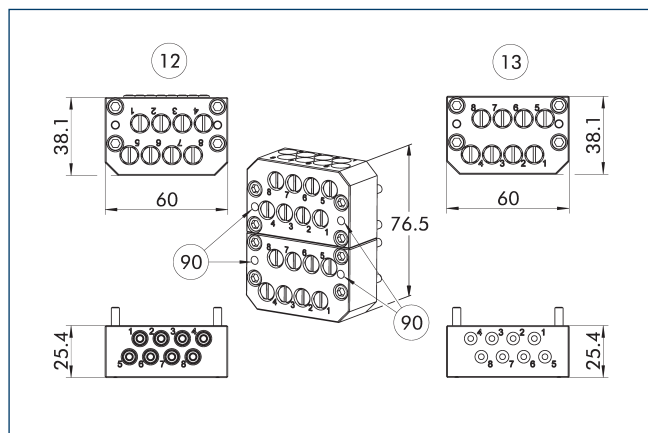
Fluid feed-through module



## Technical data

Description		SWO-P8M5-K	SWO-P8M5-A
ID		9872067	9872068
Suitable on		Quick-change master	Quick-change adapter
Screw connection diagram		J	J
Transmission type		Pneumatics	Pneumatics
Weight	[kg]	0.16	0.17
Min./max. ambient temperature	[°C]	5/60	5/60
No. of fluid feed-throughs		8	8
Connection		M5	M5
Type of medium		Air, vacuum	Air, vacuum
Max. operating pressure	[bar]	8	8
Outlet connection		axial or radial	axial or radial
Special properties		If required, another optional module can be radially mounted in a second row with the mounting surface J. The volumetric flow kV depends on the type of connection. Axial connection kV: 0.0622, radial connection kV: 0.0588, combination axial and radial connection kV: 0.0595.	If required, another optional module can be radially mounted in a second row with the mounting surface J. The volumetric flow kV depends on the type of connection. Axial connection kV: 0.0622, radial connection kV: 0.0588, combination axial and radial connection kV: 0.0595.

## Combination SW0-P8M5-K and SW0-P8M5-A



- ⑫ Master side  
 ⑬ Adapter side  
 ⑨⑩ Screw-on surface for second row J

① When using the axial air feed-through, for example, a further optional module with the screw connection diagram J can be mounted on the P8M5 pneumatic module in the second row.

# SWO-F V112A

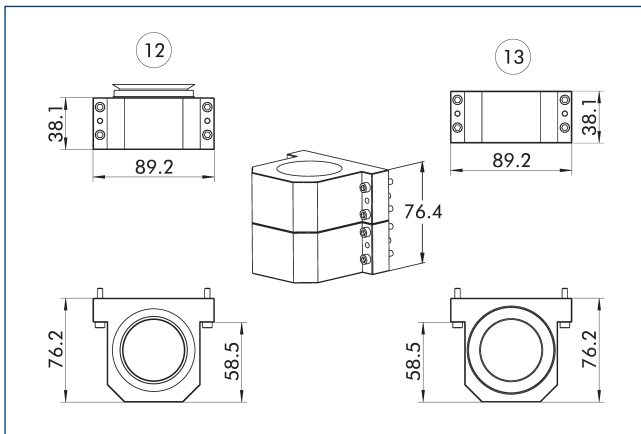
Fluid feed-through module



## Technical data

Description		SWO-V112A-K	SWO-V112A-A
ID		9956420	9956421
Suitable on		Quick-change master	Quick-change adapter
Screw connection diagram		J	J
Transmission type		Vacuum	Vacuum
Weight	[kg]	0.39	0.36
Min./max. ambient temperature	[°C]	5/60	5/60
No. of fluid feed-throughs		1	1
Connection		G3/2"	G3/2"
Type of medium		Vacuum	Vacuum
Outlet connection		axial	axial
Special properties		An adapter plate is required for mounting the optional module on the mounting surface J. This is included in the scope of delivery.	An adapter plate is required for mounting the optional module on the mounting surface J. This is included in the scope of delivery.

## Combination SWO-V112A-K and SWO-V112A-A

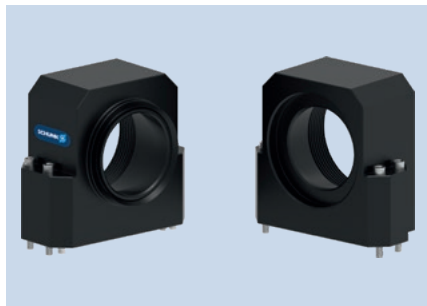


12 Master side

13 Adapter side

# SWO-F V200A

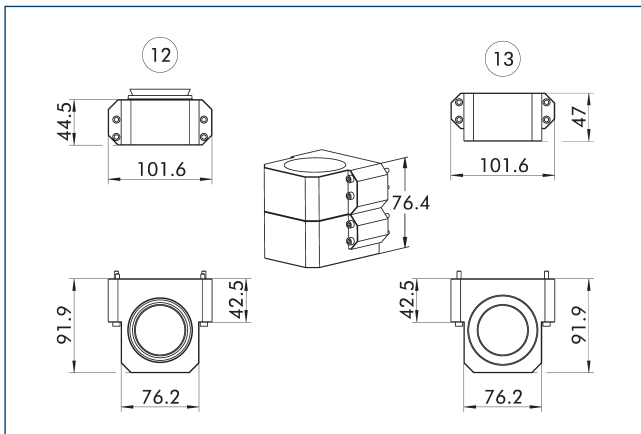
Fluid feed-through module



## Technical data

Description		SWO-V200A-K	SWO-V200A-A
ID		30076024	30076025
Suitable on		Quick-change master	Quick-change adapter
Screw connection diagram		J	J
Transmission type		Vacuum	Vacuum
Weight	[kg]	0.68	0.63
Min./max. ambient temperature	[°C]	5/60	5/60
No. of fluid feed-throughs		1	1
Connection		G2"	G2"
Type of medium		Vacuum	Vacuum
Outlet connection		axial	axial
Special properties		An adapter plate is required for mounting the optional module on the mounting surface J. This is included in the scope of delivery.	An adapter plate is required for mounting the optional module on the mounting surface J. This is included in the scope of delivery.

## Combination SWO-V200A-K and SWO-V200A-A

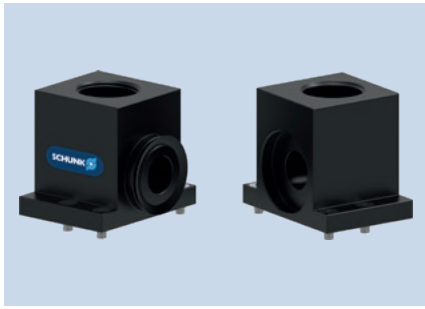


12 Master side

13 Adapter side

# SWO-F V34

Fluid feed-through module

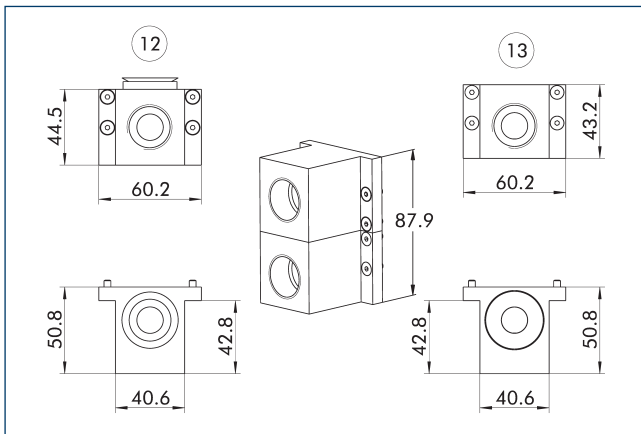


## Technical data

Description		SWO-V34-K	SWO-V34-A
ID		9937335	9937336
Suitable on		Quick-change master	Quick-change adapter
Screw connection diagram		J	J
Transmission type		Vacuum	Vacuum
Weight	[kg]	0.21	0.2
Min./max. ambient temperature	[°C]	5/60	5/60
No. of fluid feed-throughs		1	1
Connection		G3/4"	G3/4"
Type of medium		Vacuum	Vacuum
Volumne flow KV	[m³/h]	6.85	6.85
Outlet connection		radial	radial
Special properties		-	-



## Combination SW0-V34-K and SW0-V34-A

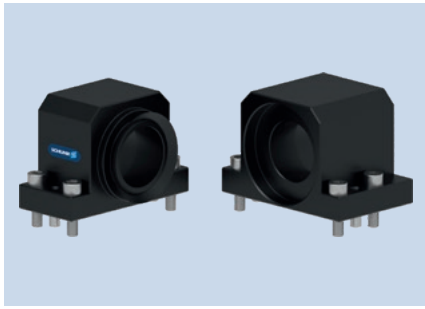


12 Master side

13 Adapter side

# SWO-F VF1

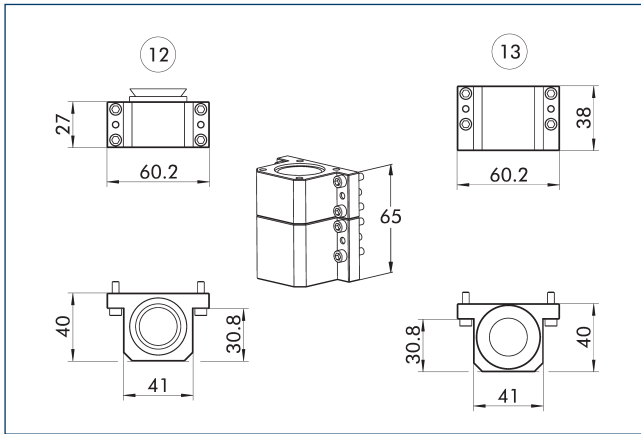
Fluid feed-through module



## Technical data

Description		SWO-VF1-K	SWO-VF1-A
ID		9873255	9873256
Suitable on		Quick-change master	Quick-change adapter
Screw connection diagram		J	J
Transmission type		Vacuum	Vacuum
Weight	[kg]	0.09	0.14
Min./max. ambient temperature	[°C]	5/60	5/60
No. of fluid feed-throughs		1	1
Connection		G1"	G1"
Type of medium		Vacuum	Vacuum
Outlet connection		axial	axial
Special properties		-	-

## Combination SWO-VF1-K and SWO-VF1-A



12 Master side

13 Adapter side

# SWO-F FG2

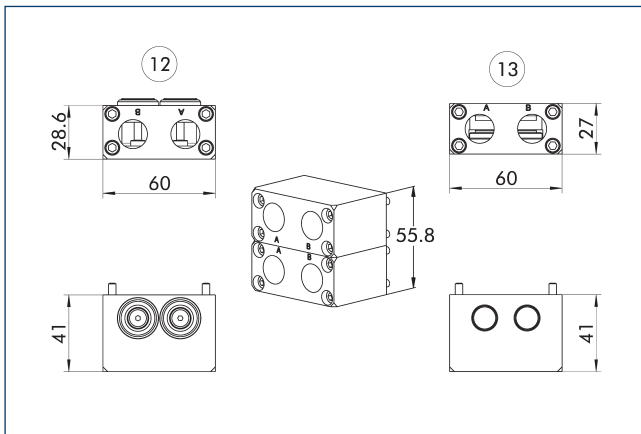
Fluid feed-through module



## Technical data

Description		SWO-FG2-K	SWO-FG2-A
ID		9936817	9936818
Suitable on		Quick-change master	Quick-change adapter
Screw connection diagram		J	J
Transmission type		liquids	liquids
Weight	[kg]	0.41	0.33
Min./max. ambient temperature	[°C]	5/60	5/60
No. of fluid feed-throughs		2	2
Connection		G3/8"	G3/8"
Type of medium		Air, water	Air, water
Volumne flow KV	[m³/h]	1.2	1.2
Max. operating pressure	[bar]	6.9	6.9
Outlet connection		radial	radial
Special properties		self-sealing ports	self-sealing ports

## Combination SW0-FG2-K and SW0-FG2-A



12 Master side

13 Adapter side

# SWO-F FG4

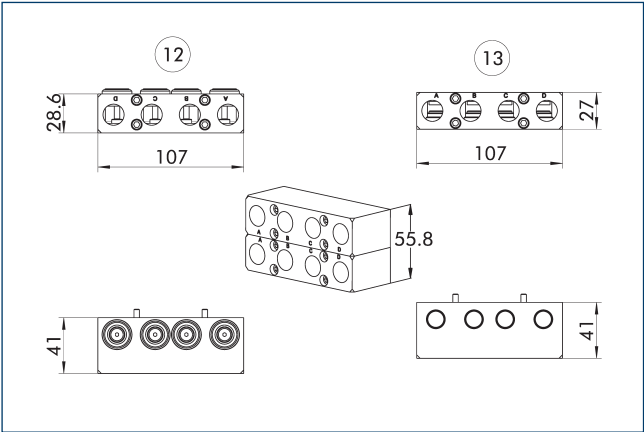
Fluid feed-through module



## Technical data

Description		SWO-FG4-K	SWO-FG4-A
ID		9937333	9937334
Suitable on		Quick-change master	Quick-change adapter
Screw connection diagram		J	J
Transmission type		liquids	liquids
Weight	[kg]	0.72	0.58
Min./max. ambient temperature	[°C]	5/60	5/60
No. of fluid feed-throughs		4	4
Connection		G3/8"	G3/8"
Type of medium		Air, water	Air, water
Volumne flow KV	[m³/h]	1.2	1.2
Max. operating pressure	[bar]	6.9	6.9
Outlet connection		radial	radial
Special properties		self-sealing ports	self-sealing ports

Combination SWO-FG4-K and SWO-FG4-A



12 Master side

13 Adapter side

# SWO-F F2HG14A

Fluid feed-through module

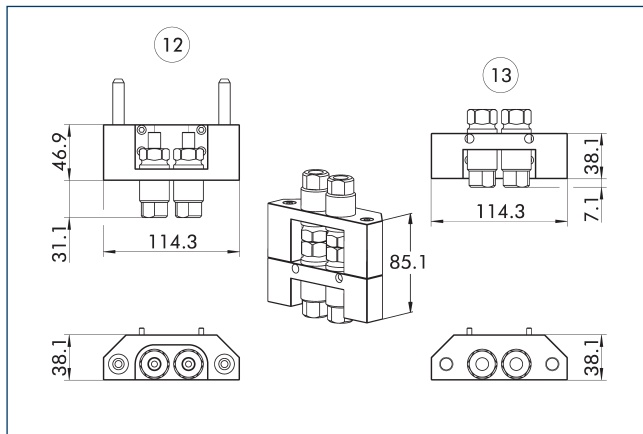


## Technical data

Description		SWO-F2HG14A-K	SWO-F2HG14A-A
ID		30089378	30089379
Suitable on		Quick-change master	Quick-change adapter
Screw connection diagram		J	J
Transmission type		Hydraulics	Hydraulics
Weight	[kg]	0.71	0.61
Min./max. ambient temperature	[°C]	5/60	5/60
No. of fluid feed-throughs		2	2
Connection		G1/4"	G1/4"
Type of medium		Hydraulic, water	Hydraulic, water
Volumne flow KV	[m³/h]	0.39	0.39
Max. operating pressure	[bar]	160	160
Outlet connection		axial	axial
Special properties		The pressure may only be applied to one port at any time. The high pressure creates separation forces, which greatly reduces the payload of the quick-change system.	The pressure may only be applied to one port at any time. The high pressure creates separation forces, which greatly reduces the payload of the quick-change system.



## Combination SWO-F2HG14A-K and SWO-F2HG14A-A

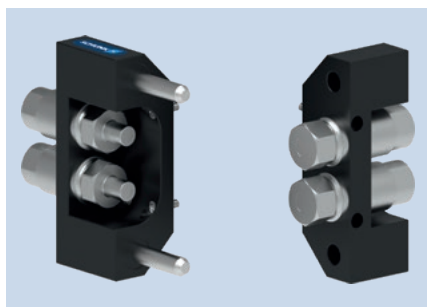


12 Master side

13 Adapter side

# SWO-F F2HG14B

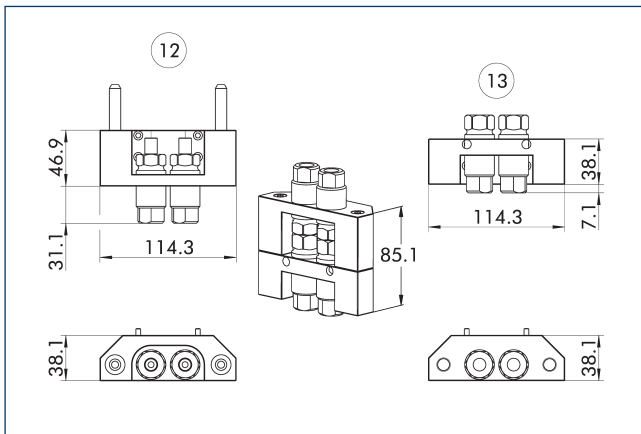
Fluid feed-through module



## Technical data

Description		SWO-F2HG14B-K	SWO-F2HG14B-A
ID		1326392	1326393
Suitable on		Quick-change master	Quick-change adapter
Screw connection diagram		J	J
Transmission type		Hydraulics	Hydraulics
Weight	[kg]	0.71	0.61
Min./max. ambient temperature	[°C]	5/60	5/60
No. of fluid feed-throughs		2	2
Connection		G1/4"	G1/4"
Type of medium		Hydraulic, water	Hydraulic, water
Volumne flow KV	[m³/h]	0.39	0.39
Max. operating pressure	[bar]	207	207
Outlet connection		axial	axial
Special properties		The pressure may only be applied to one port at any time. The high pressure creates separation forces, which greatly reduces the payload of the quick-change system.	The pressure may only be applied to one port at any time. The high pressure creates separation forces, which greatly reduces the payload of the quick-change system.

## Combination SWO-F2HG14B-K and SWO-F2HG14B-A



12 Master side

13 Adapter side



**SCHUNK GmbH & Co. KG**  
**Spann- und Greiftechnik**

Bahnhofstr. 106 - 134  
D-74348 Lauffen/Neckar  
Tel. +49-7133-103-0  
Fax +49-7133-103-2399  
info@de.schunk.com  
schunk.com

Folgen Sie uns | *Follow us*

