



Hand in hand for tomorrow



Product data sheet

Deburring spindle FDB 340

Compliant. Robust. Precise.

Deburring Spindle FDB

Flexible deburring spindle for use in robotic applications

Field of application

Standard solution for flexible and robot-guided deburring of all sorts of workpieces



Advantages – Your benefits

Flexible high-frequency spindle for maximum flexibility when deburring

Pneumatically adjustable rigidity of the cutting spindle via compressed air for clean chamfer edges in every installation position

High speeds for high feed rates

Flexible use on the robot arm or as a stationary unit

Axis locking function available to restrict the compensation path on the X-axis.



Sizes
Quantity: 5



Idle speed max.
25000 .. 65000 1/min



Power
150 .. 1040 W

Functional description

The unit is driven by a pneumatic spindle with a speed of rotation depending on the unit size. The spindle is swivel mounted for being able to compensate the tolerances of the whole machining contour.

The force (rigidity) is needed for moving (oscillating) the spindle. It is controlled by a second air connection. Depending on the pressure, force is applied on the milling cut surface.



- ① **Pneumatic spindle**
High-performance spindle with up to 65,000 RPM
- ② **Ring cylinder**
for adjusting the contact pressure to the workpiece

- ③ **Bearing**
to suspend the oscillating pneumatic spindle
- ④ **Air connection**
for actuation of the ring cylinder
- ⑤ **Air connection**
with large cross-section for compressed air motor

General notes about the series

Mounting: on the robot arm or as a stationary unit

Actuation: pneumatic, with filtered compressed air (10 microns): dry and non-lubricated

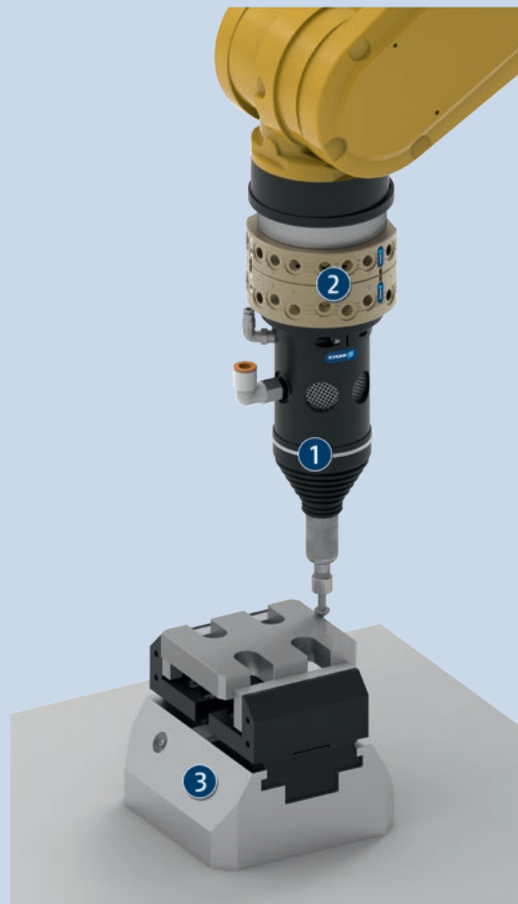
Warranty: 24 months

Ambient conditions: Please note that the unit is not suitable for use in an area where coolants or cutting fluids are present.

Application example

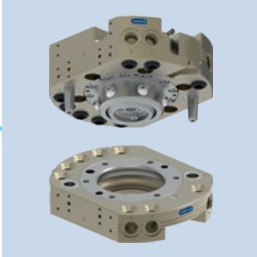
Robot-guided deburring with changing system for spindles

- ❶ Flexible deburring spindle FDB
- ❷ Automatic tool changers CPS
- ❸ Clamping force block with workpiece

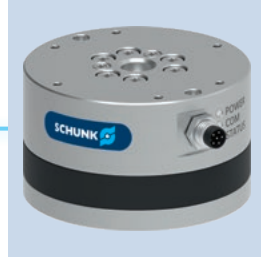


SCHUNK offers more ...

The following components make the product even more productive – the suitable addition for the highest functionality, flexibility, reliability, and controlled production.



Tool changer



Force/torque sensor

① For more information on these products can be found on the following product pages or at [schunk.com](https://www.schunk.com).

Options and special information

Universally: Its flexible mounting options mean the FDB deburring spindle is not restricted to use on a robot arm. It can also be used as a fixed tool with a moving workpiece.

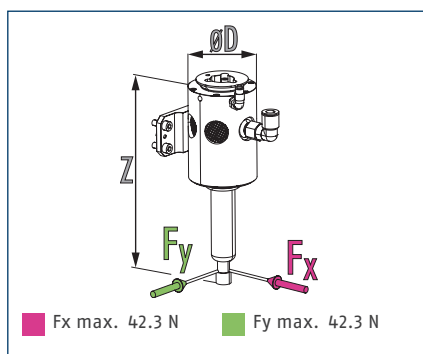
Axis locking function: The RS version enables compensation in one direction. This function is integrated in sizes 900 and 1040.

FDB 340

Deburring spindle



Dimensions and maximum loads

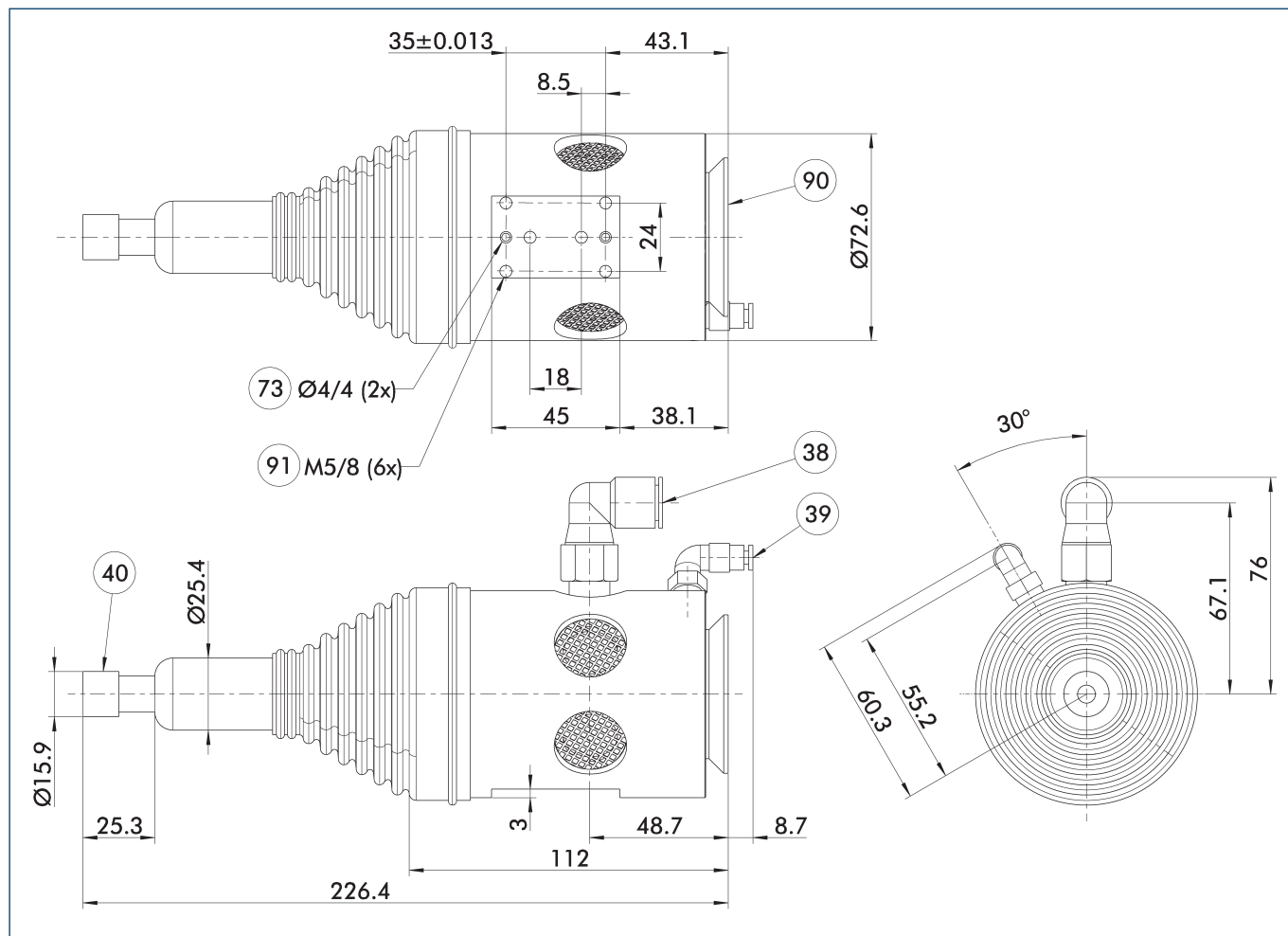


① The indicated forces show the maximum payload.

Technical data

Description		FDB-340	FDB-340-RS
ID		0322201	0322208
Power	[W]	340	340
Max. compensation X	[mm]	±7.5	±5.5
Max. compensation Y	[mm]	±7.5	0
Axis fixation			integrated
Recommended compensation path	[mm]	±3	±3
Min. compensation force	[N]	12.7	9.8
Max. compensation force	[N]	42	38.3
Min. compensating pressure	[bar]	1	1
Max. compensation pressure	[bar]	4.1	4.1
Idle speed	[1/min]	40000	40000
Operating pressure	[bar]	6.2	6.2
Noise emission	[dB(A)]	78	<78
Idle air consumption	[l/s]	5.6	2.8
Stalled air consumption	[l/s]	10.2	10.2
Collet diameter	[mm]	6	6
Weight	[kg]	1.15	1.13
Min./max. ambient temperature	[°C]	5/35	5/35
Dimensions Ø D x Z	[mm]	72.6 x 226.4	72.6 x 226.4

Main view

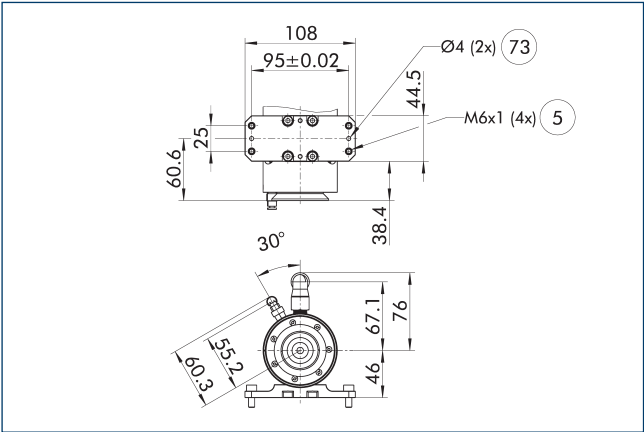


The main view shows the unit in its basic version.

- ③⑧ Air connection spindle
- ③⑨ Compensation air connection
- ④⑩ Collet

- ⑦③ Fit for centering pins
- ⑨⑩ Axial connection
- ⑨① Radial connection

Adapter plates, radial

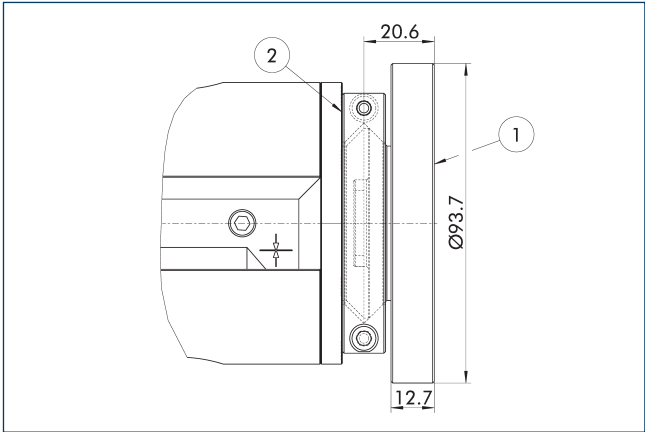


- ⑤ Through hole for connection with screws ⑦③ Fit for centering pins

Adapter plate for connecting further Schunk components or customized attachments.

Description	ID	
Adapter plate		
A-FDB-3xx/MFT-Radial	0322213	

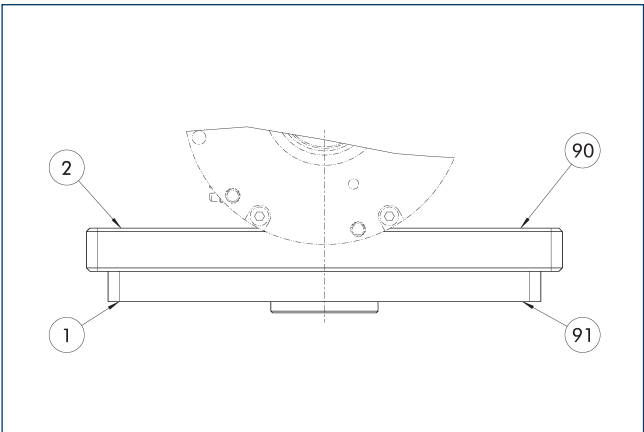
Adapter plates axial



- ① Robot-side connection ② Tool-side connection

Description	ID	Height [mm]
Adapter plate		
A-CDB/FDB-1XX/3XX-Blank	0322210	20.6
A-CDB/FDB-1XX/3XX-ISO-A050	1411542	20.6
A-CDB/FDB-1XX/3XX-ISO-A31.5	1411562	20.6

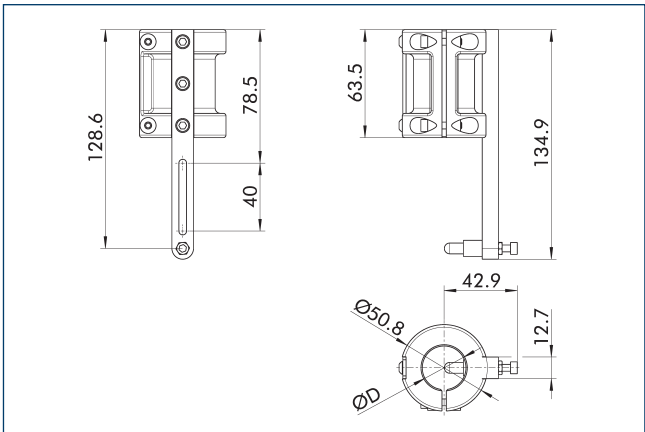
Adapter plates, radial



- ① Robot-side connection ⑨① Tool side adapter plate
② Tool-side connection ⑨② Robot side adapter plate

Description	ID	
Adapter plate		
A-REM/ISO-50-Radial	1526736	

Profile follower



Profile follower for adjustably limiting the depth of cut along a surface

Description	ID	Diameter D [mm]
Profile follower		
RC-PF1-25,4mm	1453506	25.4



SCHUNK SE & Co. KG

Spanntechnik

Greiftechnik

Automatisierungstechnik

Bahnhofstr. 106 - 134

D-74348 Lauffen/Neckar

Tel. +49-7133-103-0

Fax +49-7133-103-2399

info@de.schunk.com

schunk.com

Folgen Sie uns | *Follow us*

