

KONTEC GFD

**Mechanical quick-change
clamping system for easy
handling and short setup
times**

Integrated mechanical quick-change pallet system with 52 x 52 mm gauge on brackets, pyramid brackets and tombstones

With KONTEC GFD, SCHUNK introduces weight-optimized brackets with integrated quick-change pallet system for small vises KSC3 80 and KSC mini. The vises can be quickly and easily clamped manually via four clamping bolts on the bracket. Thanks to base bodies made of hard-anodized aluminum, the quick-change pallet system is an inexpensive and lightweight complete solution especially for pallet automation and helps to increase machine running times and reduce set-up times.



Advantages – Your benefits

- + Quick-change pallet system for SCHUNK small component vises**
Quick and easy conversion of the KSC mini and KSC3 80-130 centric clamping vises for small components
- + Low weight through the use of high-strength and hard-anodized aluminum alloy**
For highest payloads, especially in pallet automation
- + Excellent price-performance ratio**
Optimal use of the pallet solution
- + Optimal accessibility**
Ideally suited for 5-sided machining

Technical data

Description	Version	Pull-down force [kN]	Max. torque [Nm]	Actuation method
SKQ-GFD 70-1	1-way console	15	30	Manually
SEP-GFD 264-3	3-way pyramid console	15	30	Manually
SEP-GFD 300-4	4-way pyramid console	15	30	Manually
SAT-GFD 3V Ø150-171	3-way tombstone	15	30	Manually

Function GFD

The SCHUNK KONTEC GFD quick-change pallet system includes manual consoles based on four clamping pins with a pitch of 52 x 52 mm. The clamping pins are pressed into the precisely fitting half shells by the clamping rods. Due to the pitch, the consoles can accept clamping devices of quick-change pallet systems from common competitors.



- 1 Actuation via hexagon connection**
This ensures easy operation
- 2 Spindle drive**
For highest pull-down forces
- 3 Clamping rod**
For transmitting the pull-down force to clamping pins
- 4 Mounting bores in 52 x 52 mm pitch**
Compatible with Quick Point, Solid Point and RockLock quick-change pallet systems
- 5 Base body made from a high-strength and hard-anodized aluminum alloy**
For greatest payloads

Quick and easy conversion of clamping devices

The KSC mini and KSC3 80–130 centric clamping vises for small components can be quickly and easily exchanged using the quick-change pallet system GFD. The quick-change pallet system is available as a simple console, as pyramids or as a tombstone.



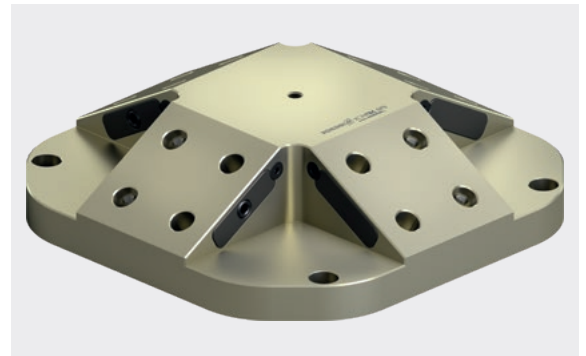
Clamping pin with 52 x 52 mm pitch

With the 52 x 52 mm pitch, it is now possible to clamp the KSC mini and KSC3 80 centric clamping vises for small components on quick-change pallet systems, and to exchange them on the machine table extremely quickly and with high repeat accuracy. In addition, this pitch ensures compatibility with other manufacturers.



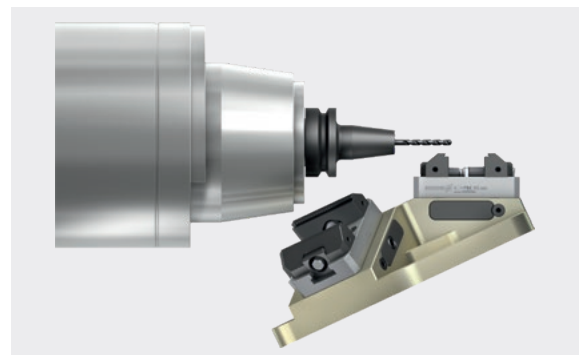
Hard anodized base body

The base of the consoles is a hard-anodized aluminum base body. This makes them ideal for pallet handling and, together with the vises, they form a cost-effective complete solution for pallet automation.



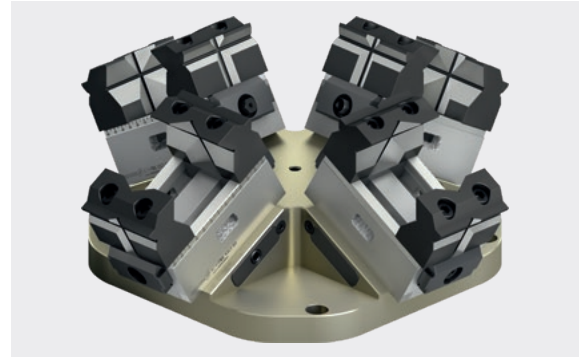
Optimal accessibility

The compact design of the consoles, pyramids and tombstones ensures optimum accessibility of the tool from all five sides. This makes them ideally suited for 5-sided machining.



Multiple clamping on 5-axis machines

Extending machine running times is becoming more and more important in today's world. By using pyramids and the tombstone, several clamping devices can be placed on the machine table. As a result, machine running time can be significantly increased, especially on 5-axis machines.



Angular console

1-way console

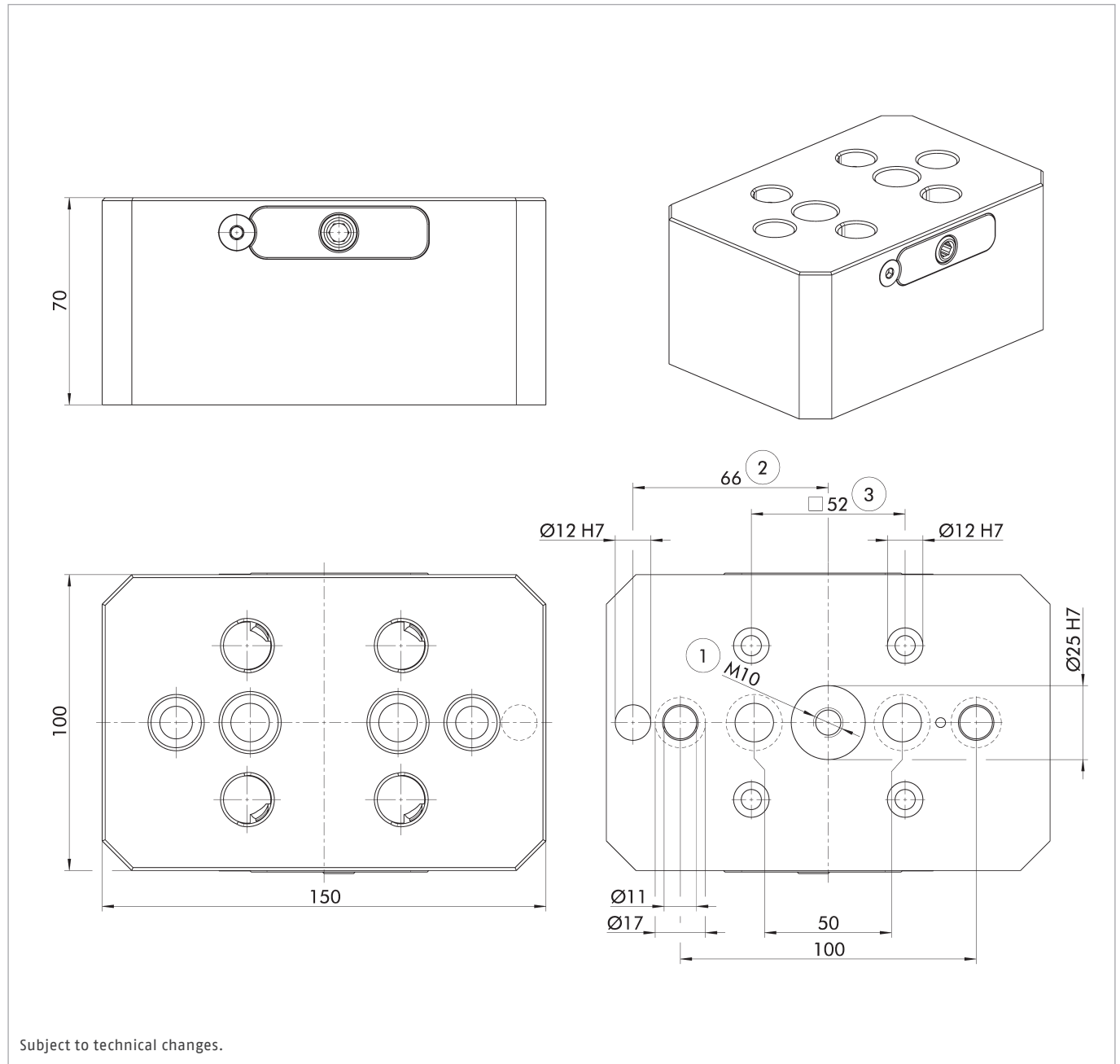
Suitable clamping devices: KSC mini 70-80, KSC mini 70-100, KSC3 80-130

Scope of delivery

Console; without clamping pins, without clamping devices

Technical data

Description	ID	Pull-down force [kN]	Max. torque [Nm]	Weight [kg]
SKQ-GFD 70-1	1561244	15	30	2.9



① To match VERO-S

② Prepared for indexing pin IXB V1

③ Clearance 52 ±0.015 mm for clamping pin GFD-SP

Pyramid console

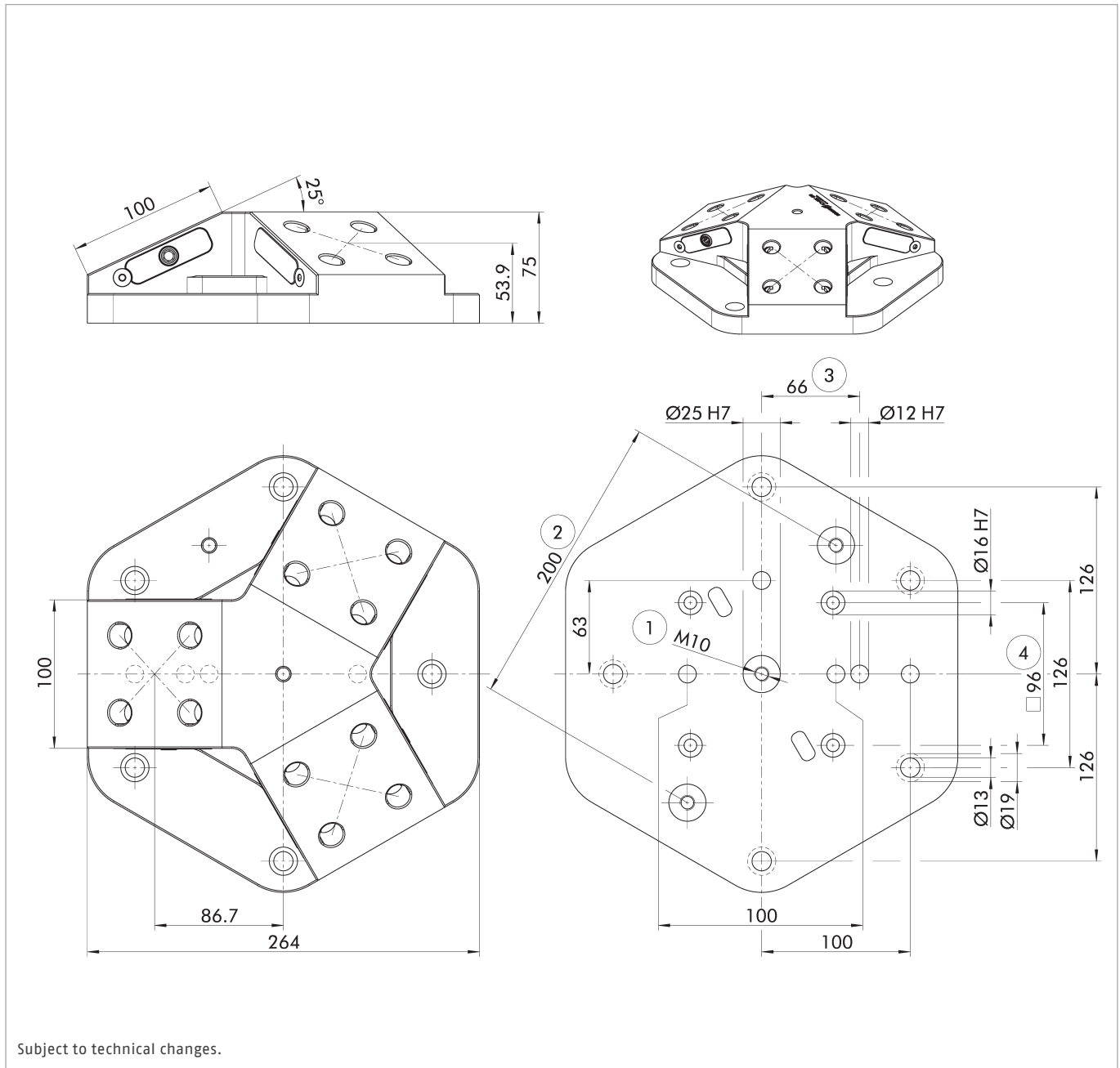
3-way pyramid console with a tilt angle of 25 degrees
Suitable clamping devices: KSC mini 70-80, KSC mini 70-100, KSC3 80-130

Scope of delivery

Pyramid console; without clamping pins, without clamping devices

Technical data

Description	ID	Pull-down force [kN]	Max. torque [Nm]	Weight [kg]
SEP-GFD 264-3	1561241	15	30	6.5



- ① To match VERO-S
- ② Pitch NSL3 200 clamping station

- ③ Prepared for indexing pin IXB V1
- ④ Clearance 96 ± 0.015 mm for clamping pin GFD-SP

Triangle tombstone

3-way tombstone

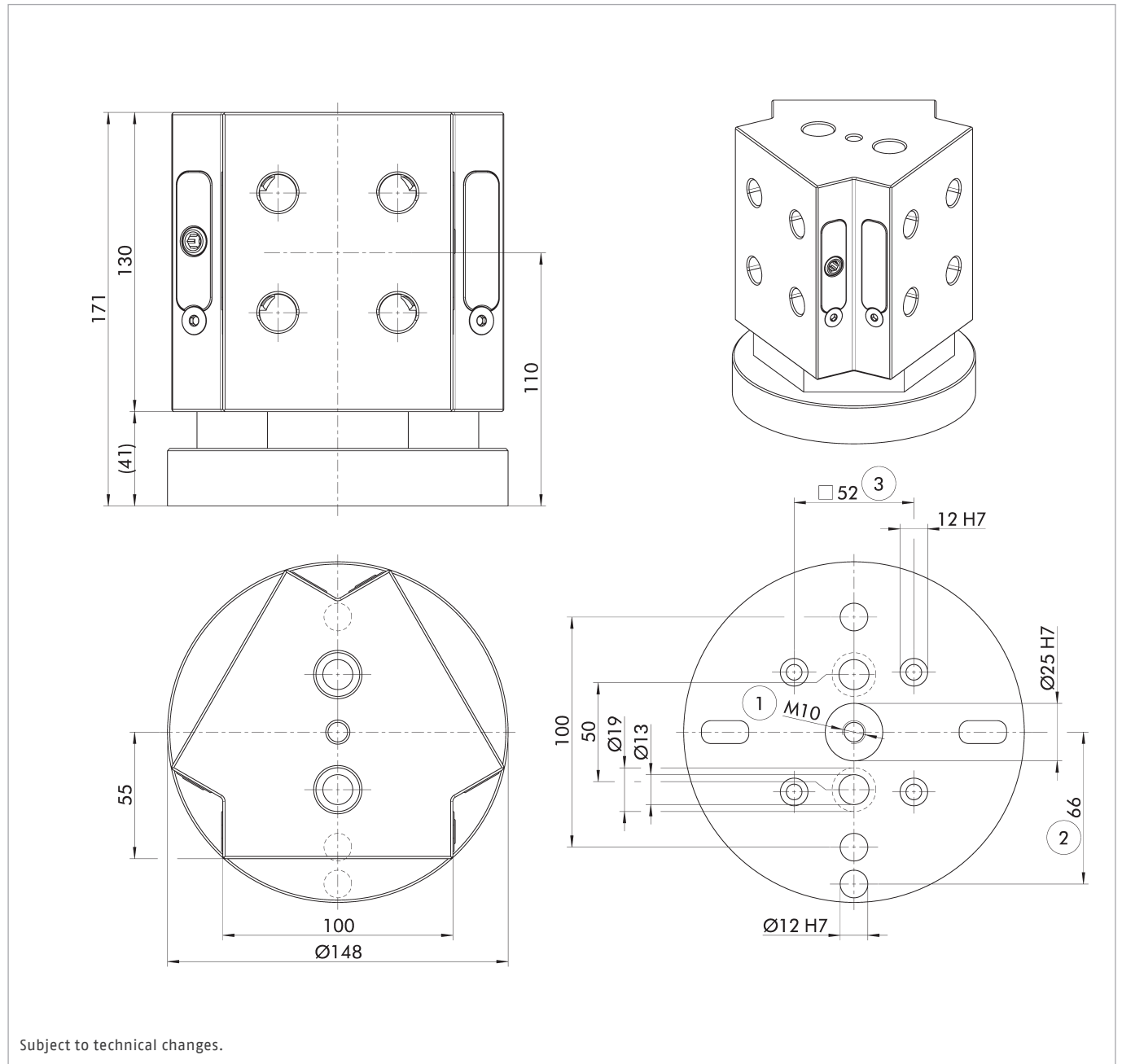
Suitable clamping devices: KSC mini 70-80, KSC mini 70-100, KSC3 80-130

Scope of delivery

Tombstone; without clamping pins, without clamping devices

Technical data

Description	ID	Pull-down force [kN]	Max. torque [Nm]	Weight [kg]
SAT-GFD 3V Ø150-171	1561243	15	30	6.3



① To match VERO-S

② Prepared for indexing pin IXB V1

③ Clearance 52 ± 0.015 mm for clamping pin GFD-SP

Suitable clamping devices

Centric clamping vises

Centric clamping vise for small components with jaw quick-change system and high clamping forces



Suitable for	Description	Clamping force [kN]	Torque [Nm]	ID
SKQ-GFD 70-1 SEP-GFD 264-3 SEP-GFD 300-4 SAT-GFD 3V Ø150-171	KSC mini 70-100	16	50	1452103
SKQ-GFD 70-1 SEP-GFD 264-3 SEP-GFD 300-4 SAT-GFD 3V Ø150-171	KSC mini 70-80	16	50	1452102

Centric clamping vises

Compact centric clamping vise with high clamping forces and a large portfolio of system and top jaws.



Suitable for	Description	Clamping force [kN]	Torque [Nm]	ID
SKQ-GFD 70-1 SEP-GFD 264-3 SEP-GFD 300-4 SAT-GFD 3V Ø150-171	KSC3 grip 80-130	25	90	1514206

Accessories

Clamping pins

Clamping pins with $\varnothing 16$ h6 screws for positive locking of consoles to the small components centric vises.
1 set = 4 pieces.



Suitable for	Description	ID
SKQ-GFD 70-1 SEP-GFD 264-3 SEP-GFD 300-4 SAT-GFD 3V $\varnothing 150-171$	GFD-SP $\varnothing 16$ h6	1561291

Clamping pins

Standard clamping pins for positive locking of workpieces or devices with the NSE3 clamping modules.



Suitable for	Description	ID
SKQ-GFD 70-1 SEP-GFD 264-3 SEP-GFD 300-4 SAT-GFD 3V $\varnothing 150-171$	SPA 40	0471151
SEP-GFD 264-3 SEP-GFD 300-4	SPB 40	0471152

Indexing pin

Used as an anti-rotation protection for VERO-S modules with anti-rotation protection V1.



Suitable for	Description	ID
SKQ-GFD 70-1 SEP-GFD 264-3 SEP-GFD 300-4 SAT-GFD 3V $\varnothing 150-171$	IXB V1	0471980

Torque wrench 5 – 50 Nm

Serves for applying a defined torque. With 3/8" square drive.



Suitable for	Description	ID
SKQ-GFD 70-1 SEP-GFD 264-3 SEP-GFD 300-4 SAT-GFD 3V $\varnothing 150-171$	GSH-D 5-50	0432355

Hexagon pin insert SW 6

Suitable for square drive 3/8".



Suitable for	Description	ID
SKQ-GFD 70-1 SEP-GFD 264-3 SEP-GFD 300-4 SAT-GFD 3V $\varnothing 150-171$	GSK-A SW6-3/8"	1561290

Clamping screws

Only for 1-way console SKQ-GFD 70-1.



Suitable for	Description	ID
T-slot 12 mm/M10	GSC-G-3 M10-T12	1561283
T-slot 14 mm/M12	GSC-G-3 M12-T14	1561284
T-Nut 16 mm/M12	GSC-G-3 M12-T16	1561285
T-Nut 18 mm/M12	GSC-G-3 M12-T18	1561286

Alignment and centering set

Only for 1-way console SKQ-GFD 70-1.



Suitable for	Description	ID
T-slot 12 mm/M10	GAZ-5 T12	1561268
T-Nut 14 mm/M10	GAZ-5 T14	1561269
T-Nut 16 mm/M10	GAZ-5 T16	1561280
T-Nut 18 mm/M10	GAZ-5 T18	1561281



**H.-D. SCHUNK GmbH & Co.
Spanntechnik KG**

Lothringer Str. 23
D-88512 Mengen
Tel. +49-7572-7614-1300
Fax +49-7572-7614-1039
CMM@de.schunk.com
schunk.com