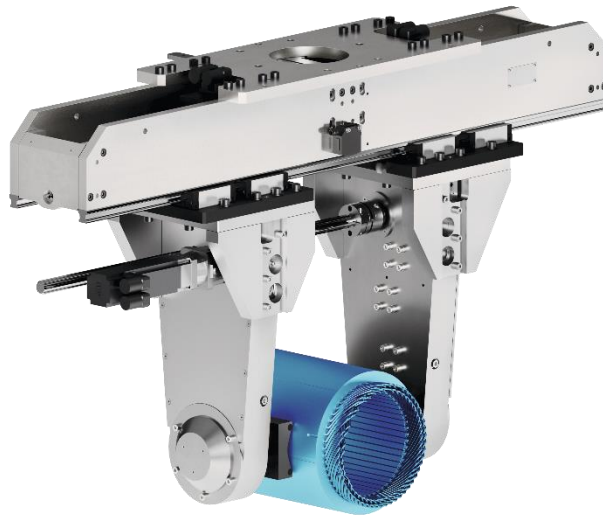


Gripping unit for stator manufacturing

Customized solution



Hand in hand for tomorrow



Gripping unit for stator manufacturing

Electric long-stroke gripper with externally driven swivel fingers enables gripping and turning of workpieces

Your advantages and benefits

- **Process-reliable handling** of workpieces, e.g. stator, rotor, or battery module
- **High flexibility** due to the electric drives of the gripping unit
- **Mechanical synchronization** of the swivel fingers enables simultaneous swiveling of the workpiece
- **Scalable solution** enables adaption of the application to specific projects

Technical data

- | | |
|-----------------------------|---------------------|
| • Gripping force | 60 N |
| • Workpiece weight (stator) | approx. 70 kg |
| • Stroke per jaw | 250 mm |
| • Swivel angle | Freely programmable |

Please contact us with your individual requirement.
You can reach the E-Mobility team at:

Hotline E-Mobility +49-7133-103-3014
E-Mobility@de.schunk.com