



Superior Clamping and Gripping



Product data sheet

Gripper for small components MPG

MPG

Gripper for small components

Precise. Compact. Reliable.

MPG gripper for small components

2-finger parallel gripper with smooth roller guides of the base jaws

Field of application

Gripping and moving of small to medium-sized workpieces in low contaminated environments, such as assembly, testing, laboratory and pharmaceutical industry

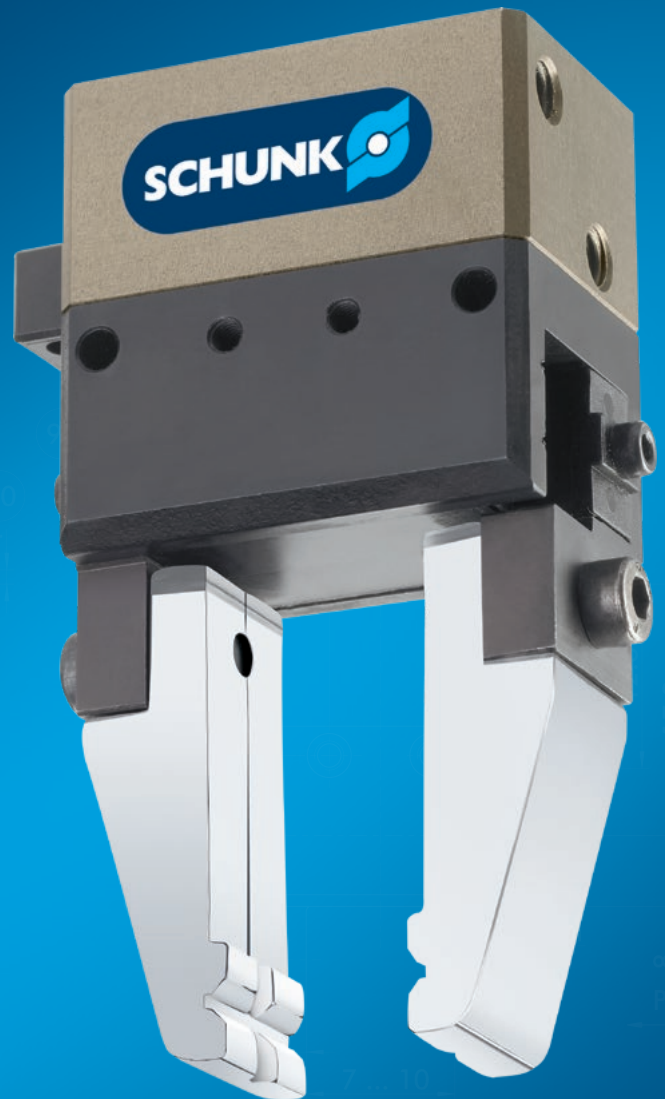
Advantages – Your benefits

Cross roller guidance for precise gripping through due to a scope-free base jaw guidance

Base jaws guided on double roller bearings ensuring low friction and smoothly running

Mounting from two sides in three screw directions for universal and flexible gripper assembly

Air supply via hose-free direct connection or screw connections for flexible pressure supply in all automated systems



Sizes
Quantity: 8



Weight
0.03 .. 1.35 kg



Gripping force
25 .. 540 N



Stroke per jaw
1.5 .. 14 mm

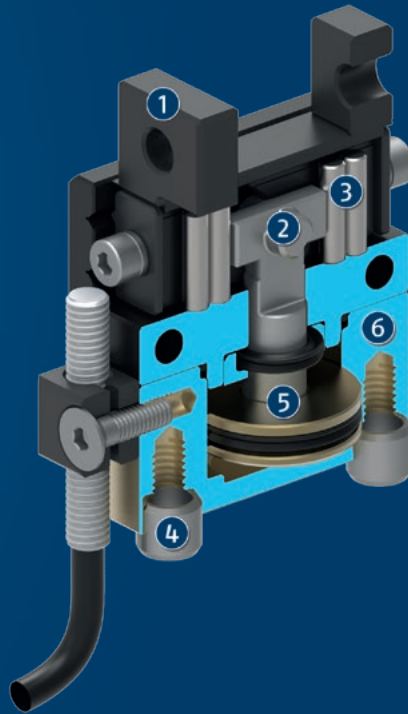


Workpiece weight
0.13 .. 1.9 kg

Functional description

The piston is moved up and down by compressed air. The side hooks at the upper end of the piston rod guide in the angular slots of both base jaws, and thus transform this movement into the synchronized opening or closing of

the base fingers.



- ① **Base jaw**
for the connection of workpiece-specific gripper fingers
- ② **Wedge-hook design**
for high force transmission and centric gripping
- ③ **Cross roller guidance**
precise gripping due to backlash-free base jaw guidance
- ④ **Centering and mounting possibilities**
for assembly of the gripper to a base area and at the long side
- ⑤ **Drive**
double-acting piston drive system
- ⑥ **Housing**
is weight-optimized due to the use of high-strength aluminum alloy

General notes about the series

Operating principle: Wedge-hook kinematics

Housing material: Aluminum alloy, anodized

Cover housing material: Steel

Base jaw material: Steel

Actuation: pneumatic, with filtered compressed air as per ISO 8573-1:2010 [7:4:4].

Warranty: 24 months

Scope of delivery: Bracket for proximity switch, centering sleeves, O-rings for direct connection, assembly and operating manual with declaration of incorporation.

Gripping force maintenance: possible by using the version with mechanical gripping force maintenance or pressure maintenance valve SDV-P

Gripping force: is the arithmetic sum of the individual force applied to each jaw at distance P (see illustration).

Finger length: is measured from the reference surface as the distance P in direction to the main axis.

The maximum permissible finger length applies until the nominal operating pressure is achieved. With higher pressures, the finger length must be reduced proportionally to the nominal operating pressure.

Repeat accuracy: is defined as a distribution of the end Position for 100 consecutive strokes.

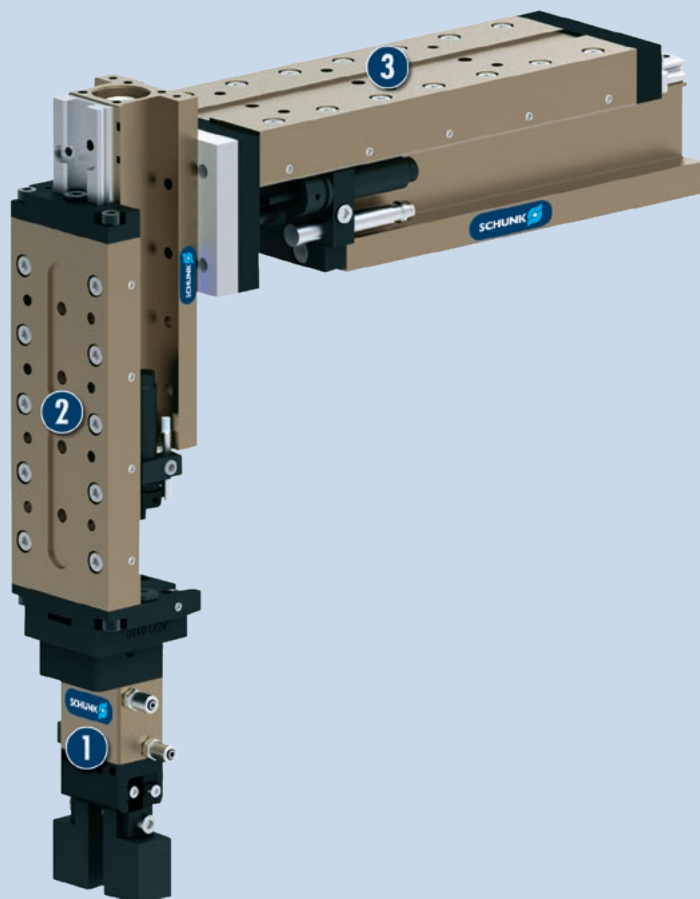
Workpiece weight: is calculated for force-fit gripping with a coefficient of static friction of 0.1 and a safety factor of 2 against workpiece slippage at acceleration due to gravity g. For form-fit or capture gripping, there are significantly higher permissible workpiece weights.

Closing and opening times: are movement times of the base jaws only, without application-specific gripper fingers. Valve switching times, hose fill times, or PLC reaction times are not included, and are to be considered when cycle times are calculated.

Application example

Pneumatically driven, two axis assembly machine for small components.

- ❶ MPG 2-finger parallel gripper with standard finger blanks
- ❷ CLM compact slide for vertical movement
- ❸ CLM compact slide for horizontal movement



SCHUNK offers more ...

The following components make the product even more productive – the suitable addition for the highest functionality, flexibility, reliability, and controlled production.



Miniature swivel unit



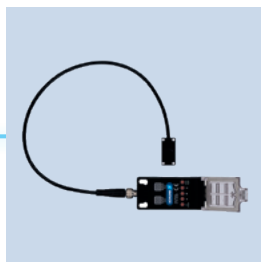
Linear module



Pick & Place Unit



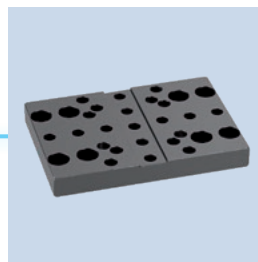
Manual change system



Flexible position sensor



Pressure maintenance valve



Adapter plate



Finger blank



Magnetic switches



Inductive proximity switch

① For more information on these products can be found on the following product pages or at [schunk.com](https://www.schunk.com).

Options and special information

Gripping force maintenance version AS/IS: The mechanical gripping force maintenance version ensures minimum gripping force even in the event of a pressure drop. In the AS/S version this acts as a closing force, in the IS version as an opening force.

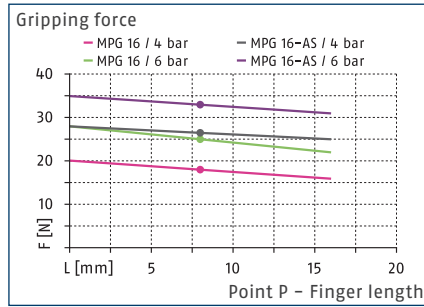
Additional fitting bores: for centering the fingers via sleeves, instead of normal fitting surfaces. Customized versions available on request.

MPG 16

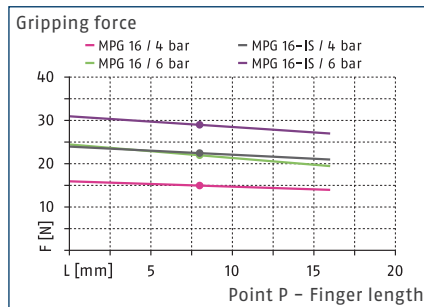
Gripper for small components



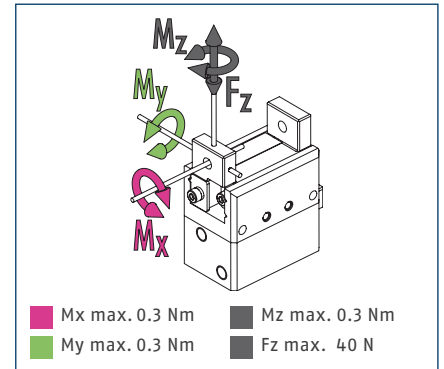
Gripping force O.D. gripping



Gripping force I.D. gripping



Max. loads



① The indicated moments and forces are static values, apply for each base jaw and may appear simultaneously. Loads may additionally occur to the moment produced by the gripping force itself.

Technical data

Description		MPG 16	MPG 16-AS	MPG 16-IS
ID		0340008	0340038	0340058
Stroke per jaw	[mm]	1.5	1.5	1.5
Closing/opening force	[N]	25/22	33/-	-/29
Min. spring force	[N]		8	7
Weight	[kg]	0.03	0.03	0.03
Recommended workpiece weight	[kg]	0.13	0.13	0.13
Cylinder volume per double stroke	[cm ³]	0.34	0.64	0.53
Min./nom./max. operating pressure	[bar]	2/6/8	4/6/6.5	4/6/6.5
Closing/opening time	[s]	0.01/0.01	0.01/0.025	0.025/0.01
Closing/opening time with spring	[s]		0.10	0.10
Max. permissible finger length	[mm]	16	16	16
Max. permissible weight per finger	[kg]	0.01	0.01	0.01
IP protection class		30	30	30
Min./max. ambient temperature	[°C]	5/90	5/90	5/90
Repeat accuracy	[mm]	0.02	0.02	0.02
Cleanroom class ISO 14644-1		5	5	5

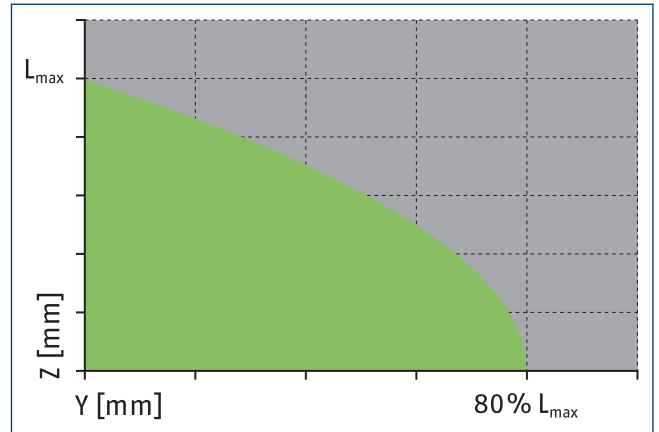
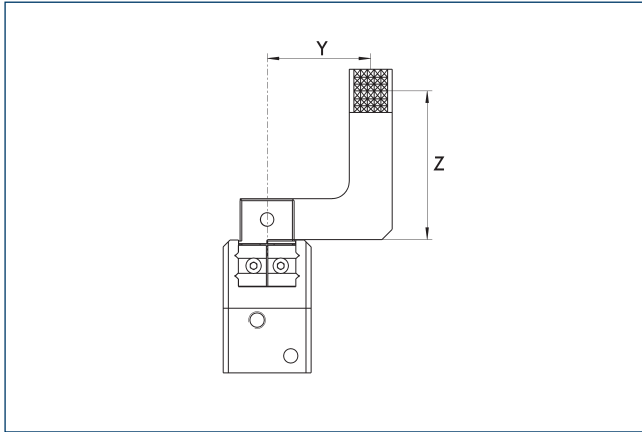
[illegible]

⑨1 Sensor IN ...

MPG 16

Gripper for small components

Maximum permitted finger projection

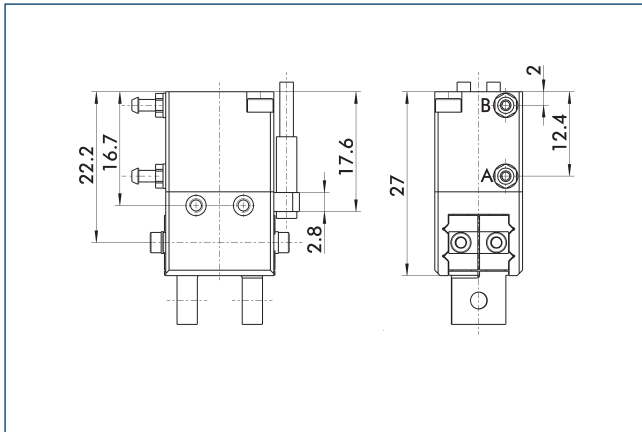


■ Permitted range

■ Inadmissible range

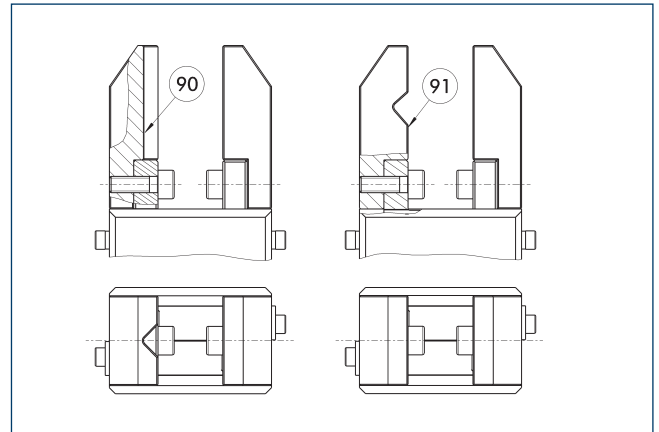
L_{\max} is equivalent to the maximum permitted finger length, see the technical data table.

Gripping force maintenance version AS/IS



The mechanical gripping force maintenance device ensures that a minimum clamping force will be applied even if there is a drop in pressure. In the AS/S variant this acts as a closing force, in the IS variant as an opening force. Besides this, gripping force maintenance can be used to increase gripping force or for single actuated gripping.

Jaw design

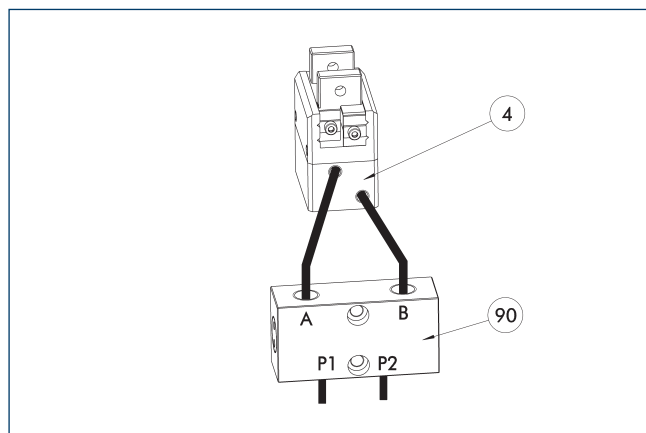


90 Vertically positioned prism

91 Horizontally positioned prism

A workpiece, which is gripped using three points of contact, can be reliably gripped with high repeatability. A system with more than three points of contact is overdetermined. The drawing shows two alternative gripper finger designs for coaxial and radial gripping of a cylindrical part.

SDV-P pressure maintenance valve



④ Grippers

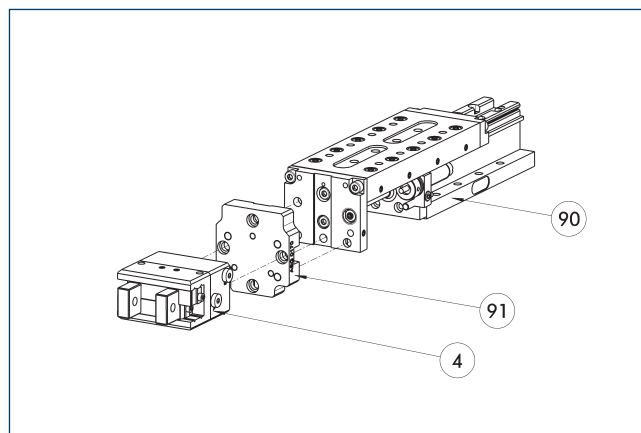
⑨⑩ SDV-P pressure maintenance valve

The SDV-P pressure maintenance valve ensures in emergency STOP situations that the pressure in the piston chamber of pneumatic gripper, swivel, linear, and quick-change modules is temporarily maintained.

Description	ID	Recommended hose diameter
		[mm]
Pressure maintenance valve		
SDV-P 04	0403130	6
Pressure maintenance valve with air bleed screw		
SDV-P 04-E	0300120	6

① In order to achieve the specified closing and opening time for each gripper variant, the recommended hose diameter must be used. The direct allocation of the respective variant of the gripper for the respective SDV-P can be found at schunk.com.

Modular Assembly Automation



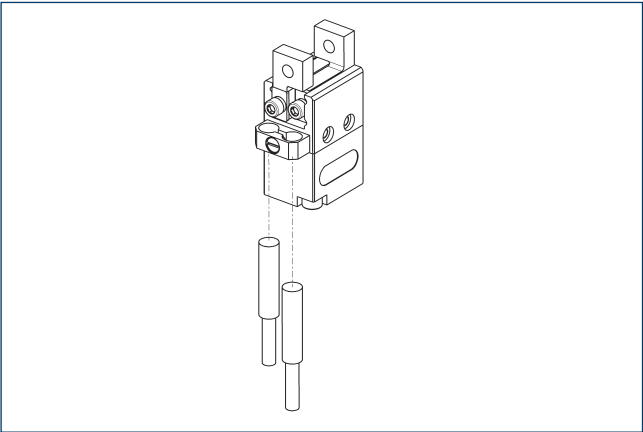
④ Grippers

⑨① ASG adapter plate

⑨⑩ Linear module CLM/KLM/LM/ELP/ELM/ELS/HLM

Grippers and linear modules can be combined with standard adapter plates from the modular assembly system. For more information see our main catalog "Modular Assembly Automation".

Inductive proximity switches



Directly mounted end position monitoring.

Description	ID	Often combined
Inductive proximity switch		
IN 30K-S-M8-PNP	1001272	●
Connection cables		
KA BG08-L 3P-0300-PNP	0301622	●
KA BG08-L 3P-0500-PNP	0301623	
KA BW08-L 3P-0300-PNP	0301594	
KA BW08-L 3P-0500-PNP	0301502	
Clip for connector/socket		
CLI-M8	0301463	
Cable extension		
KV BW08-SG08 3P-0030-PNP	0301495	
KV BW08-SG08 3P-0100-PNP	0301496	
KV BW08-SG08 3P-0200-PNP	0301497	●
Sensor distributor		
V2-M8	0301775	●
V4-M8	0301746	
V8-M8	0301751	

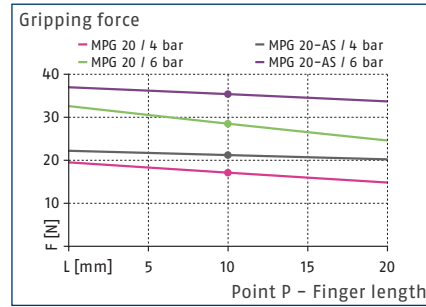
❗ Two sensors are required per unit for monitoring two positions. On option, extension cables and sensor distributors are available. Additional product variants of the sensor, and further information and technical data can be found in the catalog chapter sensor system.

MPG 20

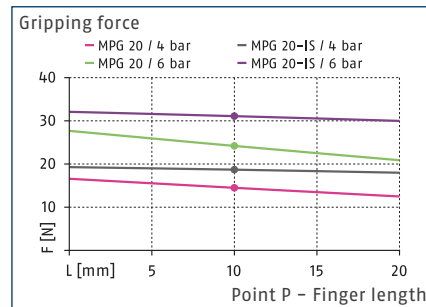
Gripper for small components



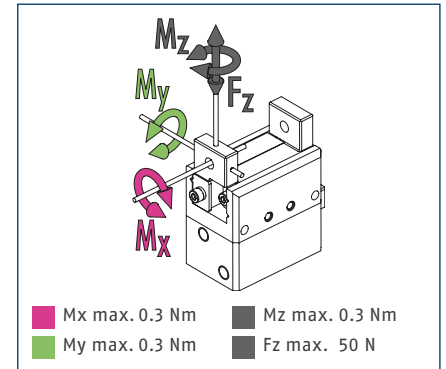
Gripping force O.D. gripping



Gripping force I.D. gripping



Max. loads

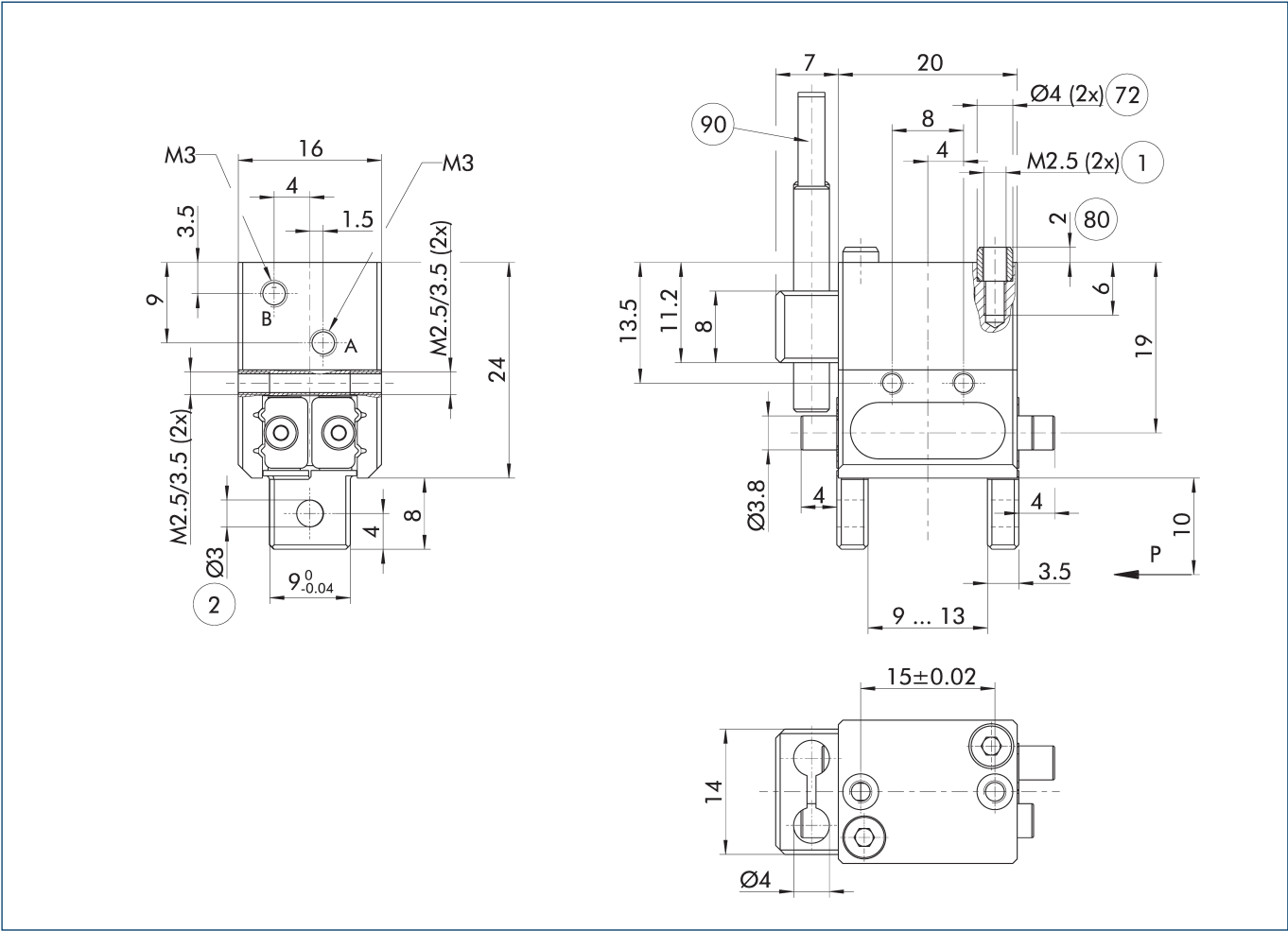


① The indicated moments and forces are static values, apply for each base jaw and may appear simultaneously. Loads may additionally occur to the moment produced by the gripping force itself.

Technical data

Description		MPG 20	MPG 20-AS	MPG 20-IS	MPG 20-FPS
ID		0340009	0340039	0340059	0340069
Stroke per jaw	[mm]	2	2	2	2
Closing/opening force	[N]	28/24	36/-	-/31	28/24
Min. spring force	[N]		8	7	
Weight	[kg]	0.04	0.05	0.05	0.05
Recommended workpiece weight	[kg]	0.14	0.14	0.14	0.14
Cylinder volume per double stroke	[cm ³]	0.39	1.1	0.84	0.39
Min./nom./max. operating pressure	[bar]	2/6/8	4/6/6.5	4/6/6.5	2/6/8
Closing/opening time	[s]	0.015/0.015	0.02/0.03	0.03/0.02	0.015/0.015
Closing/opening time with spring	[s]		0.10	0.10	
Max. permissible finger length	[mm]	20	20	20	20
Max. permissible weight per finger	[kg]	0.01	0.01	0.01	0.01
IP protection class		30	30	30	30
Min./max. ambient temperature	[°C]	5/90	5/90	5/90	5/90
Repeat accuracy	[mm]	0.02	0.02	0.02	0.02
Cleanroom class ISO 14644-1		5	5	5	5

Main view

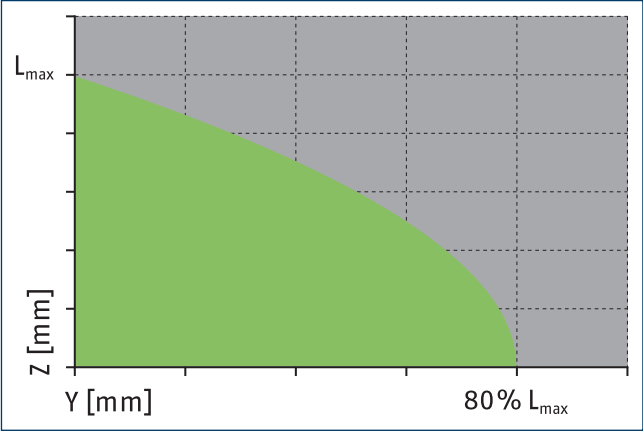
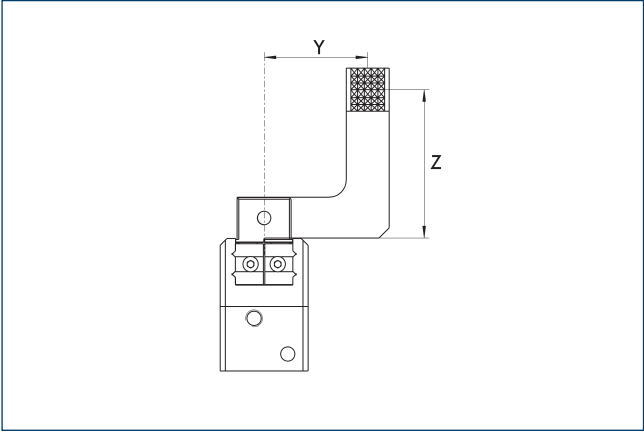


The drawing shows the gripper in the basic version with closed jaws, without dimensional consideration of the options described below.

① As an alternative/in addition to spring-assisted mechanical gripping force maintenance, the SDV-P pressure maintenance valve can be used for I.D. and O.D. gripping (see "Accessories" section of catalog).

- A, a Main / direct connection, gripper opening
- B, b Main / direct connection, gripper closing
- ① Gripper connection
- ② Finger connection
- 72 Fit for centering sleeves
- 80 Depth of the centering sleeve hole in the counter part
- 90 Sensor IN ...

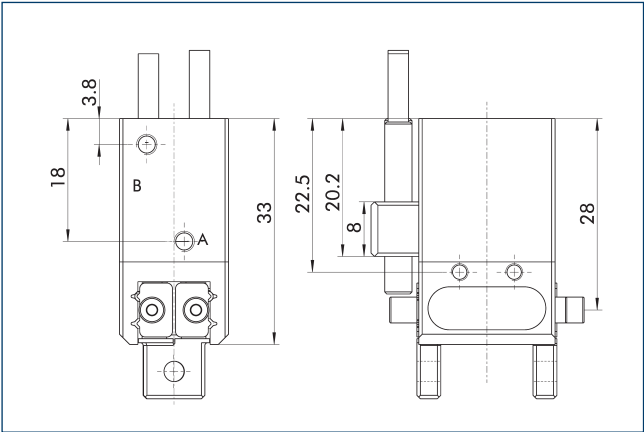
Maximum permitted finger projection



■ Permitted range ■ Inadmissible range

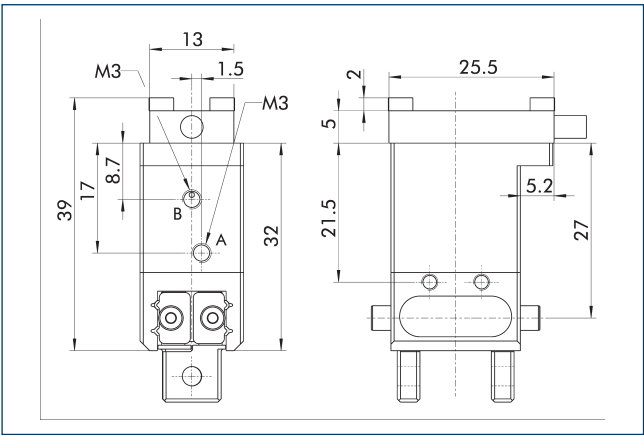
L_{max} is equivalent to the maximum permitted finger length, see the technical data table.

Gripping force maintenance version AS/IS



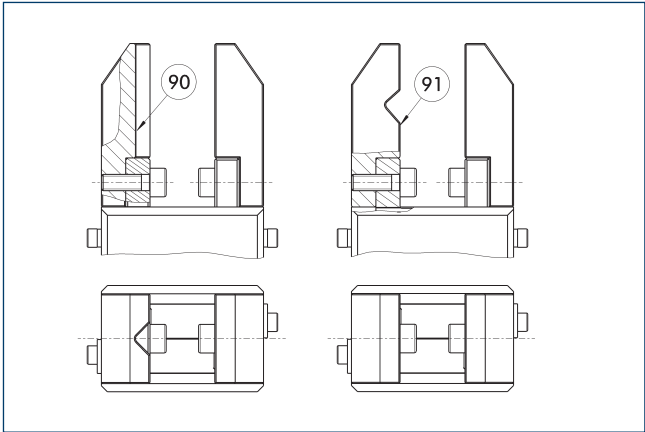
The mechanical gripping force maintenance device ensures that a minimum clamping force will be applied even if there is a drop in pressure. In the AS/S variant this acts as a closing force, in the IS variant as an opening force. Besides this, gripping force maintenance can be used to increase gripping force or for single actuated gripping.

Flexible position sensor



The following FPS position sensor can differentiate between five programmable areas or switching points for the stroke of a gripper, and can be used in connection with a PC as a measuring system.

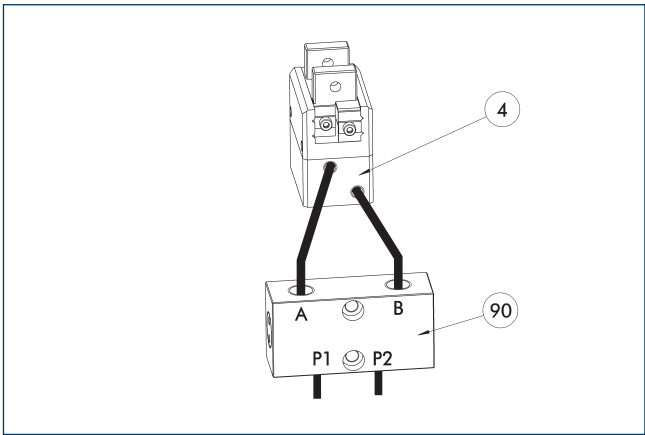
Jaw design



90 Vertically positioned prism 91 Horizontally positioned prism

A workpiece, which is gripped using three points of contact, can be reliably gripped with high repeatability. A system with more than three points of contact is overdetermined. The drawing shows two alternative gripper finger designs for coaxial and radial gripping of a cylindrical part.

SDV-P pressure maintenance valve



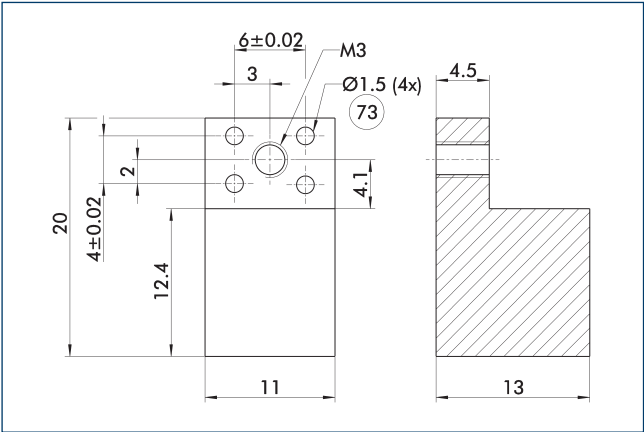
4 Grippers 90 SDV-P pressure maintenance valve

The SDV-P pressure maintenance valve ensures in emergency STOP situations that the pressure in the piston chamber of pneumatic gripper, swivel, linear, and quick-change modules is temporarily maintained.

Description	ID	Recommended hose diameter [mm]
Pressure maintenance valve		
SDV-P 04	0403130	6
Pressure maintenance valve with air bleed screw		
SDV-P 04-E	0300120	6

ⓘ In order to achieve the specified closing and opening time for each gripper variant, the recommended hose diameter must be used. The direct allocation of the respective variant of the gripper for the respective SDV-P can be found at schunk.com.

Finger blanks ABR-MPG-plus 20

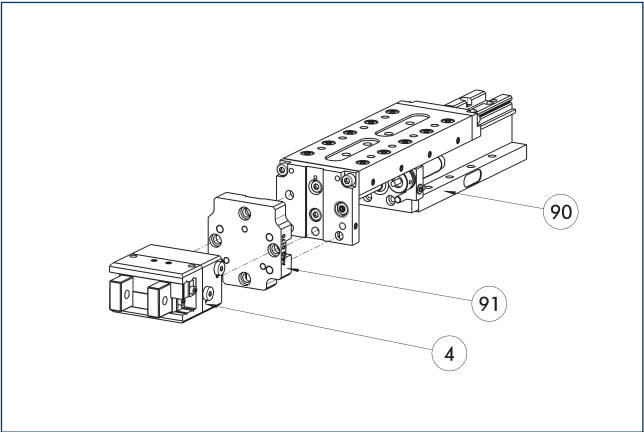


73 Fit for centering pins

The drawing shows the finger blank which can be reworked by the customer.

Description	ID	Material	Scope of delivery
Finger blank			
ABR-MPG-plus 20	0340210	Aluminum (3.4365)	2

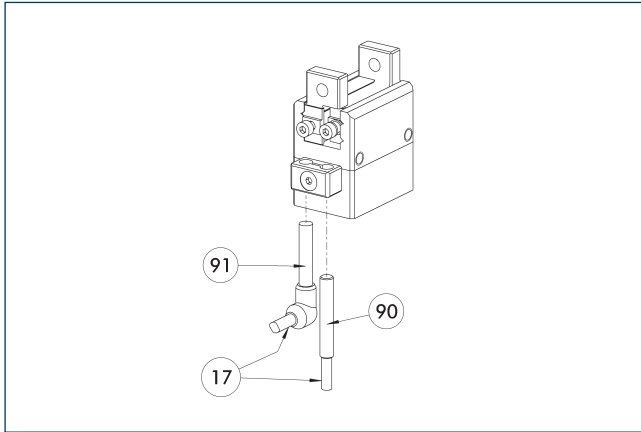
Modular Assembly Automation



- 4 Grippers
- 90 Linear module CLM/KLM/LM/ELP/ELM/ELS/HLM
- 91 ASG adapter plate

Grippers and linear modules can be combined with standard adapter plates from the modular assembly system. For more information see our main catalog "Modular Assembly Automation".

Inductive proximity switches



17 Cable outlet

91 Sensor IN...-SA

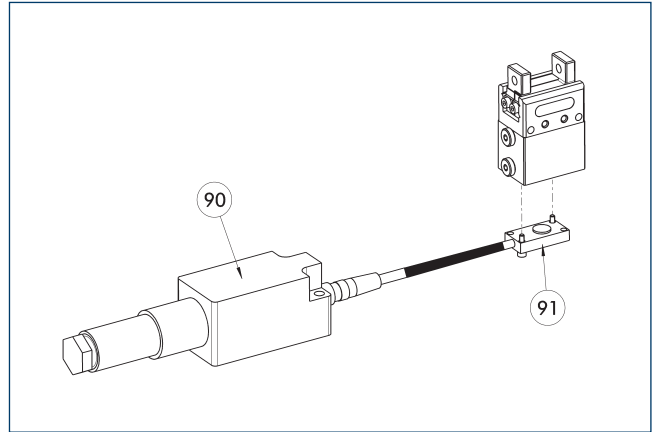
90 Sensor IN ...

Directly mounted end position monitoring.

Description	ID	Often combined
Inductive proximity switch		
IN 40-S-M12	0301574	
IN 40-S-M8	0301474	●
INK 40-S	0301555	
Inductive proximity switch with lateral cable outlet		
IN 40-S-M12-SA	0301577	
IN 40-S-M8-SA	0301473	●
INK 40-S-SA	0301565	
Connection cables		
KA BG08-L 3P-0300-PNP	0301622	●
KA BG08-L 3P-0500-PNP	0301623	
KA BG12-L 3P-0500-PNP	30016369	
KA BW08-L 3P-0300-PNP	0301594	
KA BW08-L 3P-0500-PNP	0301502	
KA BW12-L 3P-0300-PNP	0301503	
KA BW12-L 3P-0500-PNP	0301507	
Clip for connector/socket		
CLI-M12	0301464	
CLI-M8	0301463	
Cable extension		
KV BG12-SG12 3P-0030-PNP	0301999	
KV BG12-SG12 3P-0060-PNP	0301998	
KV BW08-SG08 3P-0030-PNP	0301495	
KV BW08-SG08 3P-0100-PNP	0301496	
KV BW08-SG08 3P-0200-PNP	0301497	●
KV BW12-SG12 3P-0030-PNP	0301595	
KV BW12-SG12 3P-0100-PNP	0301596	
KV BW12-SG12 3P-0200-PNP	0301597	
Sensor distributor		
V2-M12	0301776	●
V2-M8	0301775	●
V4-M8	0301746	
V8-M8	0301751	

① Two sensors are required per unit for monitoring two positions. On option, extension cables and sensor distributors are available. Additional product variants of the sensor, and further information and technical data can be found in the catalog chapter sensor system.

Flexible position sensor



90 FPS-F5 evaluation electronic

91 FPS-S sensor

The FPS monitoring is only possible for this size in combination with the appropriate FPS variant of the gripper.

Description	ID	Often combined
Sensor		
FPS-S 13	0301705	
Evaluation electronics		
FPS-F5	0301805	●
Cable extension		
KV BG08-SG08 3P-0050	0301598	
KV BG08-SG08 3P-0100	0301599	
Connection cables		
KA BG16-L 12P-1000	0301801	
Clip for connector/socket		
CLI-M8	0301463	

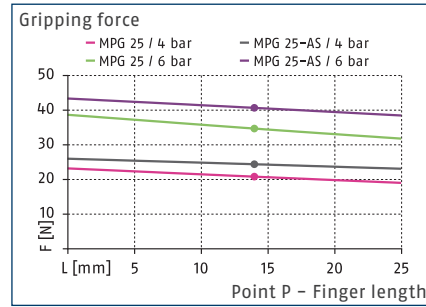
① When using an FPS system, an FPS sensor (FPS-S) as well as an electronic processor (FPS-F5 / F5 T) are required for each gripper as well as a mounting kit (AS), if listed. Cable extensions (KV) are optionally available – see catalog chapter “Accessories.”

MPG 25

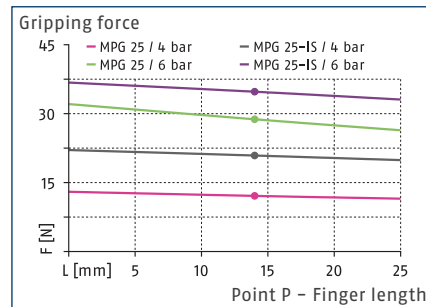
Gripper for small components



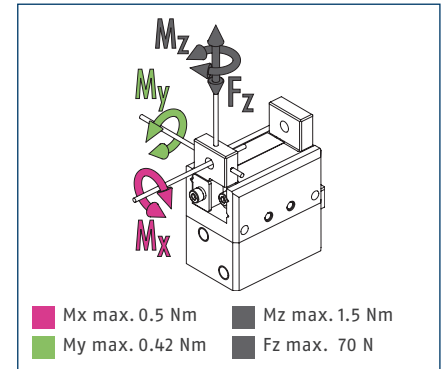
Gripping force O.D. gripping



Gripping force I.D. gripping



Max. loads

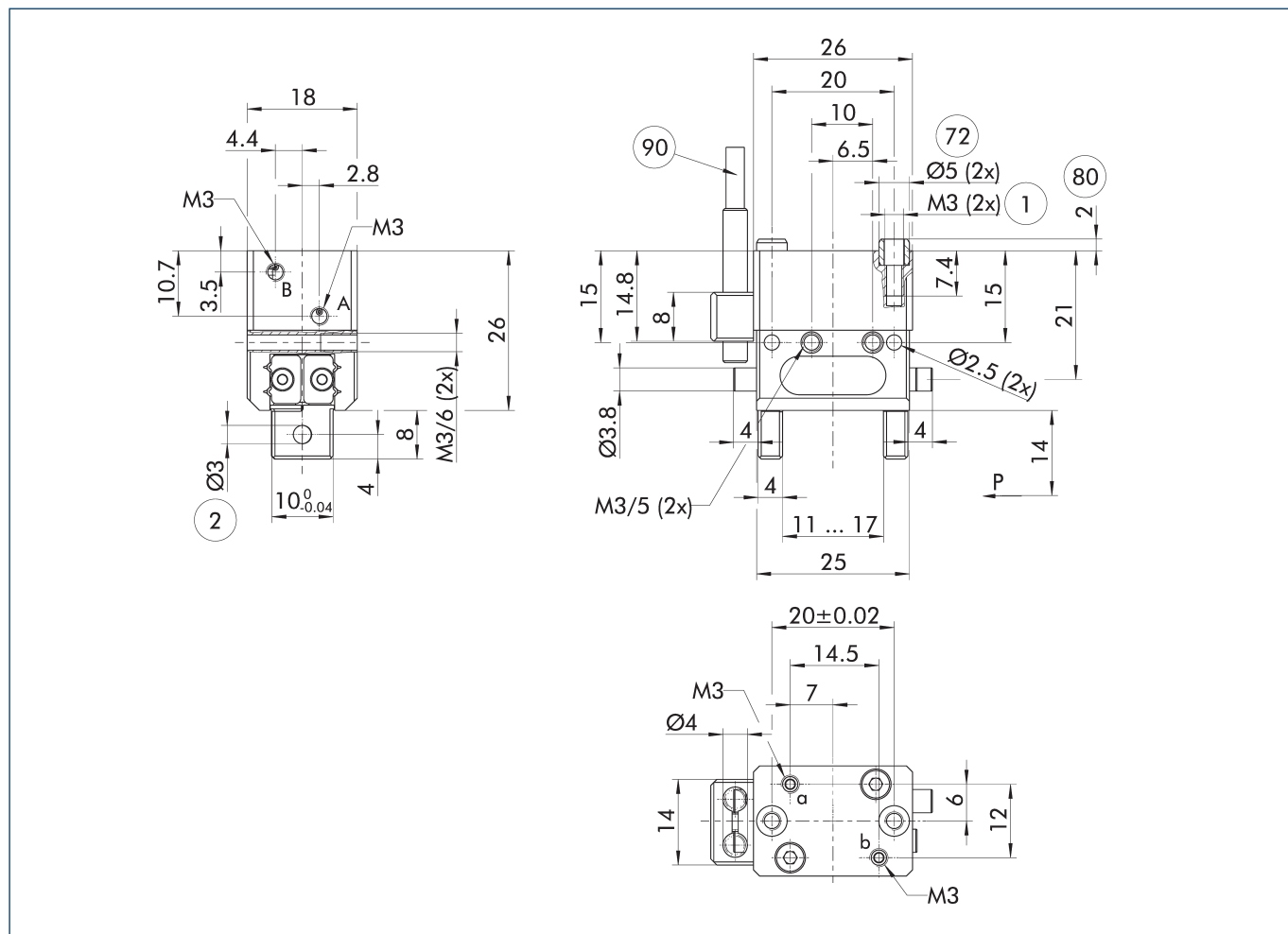


① The indicated moments and forces are static values, apply for each base jaw and may appear simultaneously. Loads may additionally occur to the moment produced by the gripping force itself.

Technical data

Description		MPG 25	MPG 25-AS	MPG 25-IS	MPG 25-FPS
ID		0340010	0340040	0340060	0340070
Stroke per jaw	[mm]	3	3	3	3
Closing/opening force	[N]	31/28	41/~	~37	31/28
Min. spring force	[N]		10	9	
Weight	[kg]	0.06	0.08	0.08	0.07
Recommended workpiece weight	[kg]	0.16	0.16	0.16	0.16
Cylinder volume per double stroke	[cm ³]	0.67	2.1	1.6	0.67
Min./nom./max. operating pressure	[bar]	2/6/8	4/6/6.5	4/6/6.5	2/6/8
Closing/opening time	[s]	0.02/0.02	0.02/0.035	0.035/0.02	0.02/0.02
Closing/opening time with spring	[s]		0.10	0.10	
Max. permissible finger length	[mm]	25	25	25	25
Max. permissible weight per finger	[kg]	0.02	0.02	0.02	0.02
IP protection class		30	30	30	30
Min./max. ambient temperature	[°C]	5/90	5/90	5/90	5/90
Repeat accuracy	[mm]	0.02	0.02	0.02	0.02
Cleanroom class ISO 14644-1		5	5	5	5

Main view



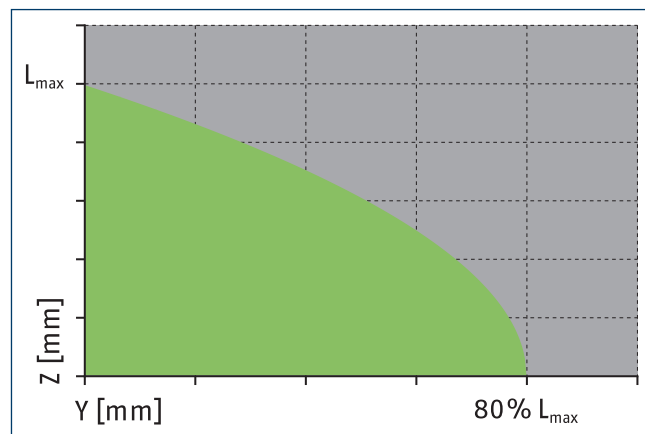
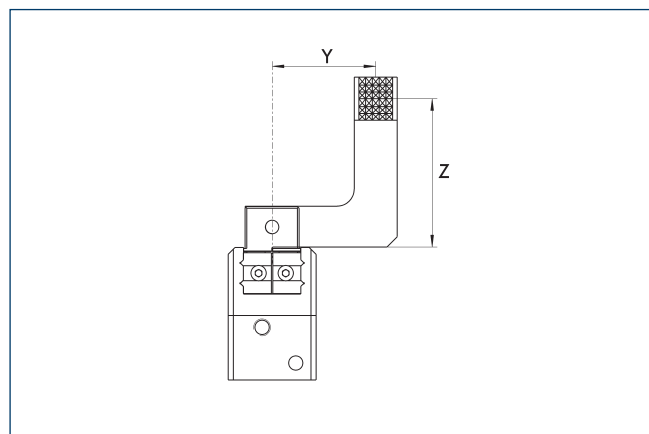
The drawing shows the basic version of the gripper with open jaws, without dimensional consideration of the options described below.

- ① As an alternative/in addition to spring-assisted mechanical gripping force maintenance, the SDV-P pressure maintenance valve can be used for I.D. and O.D. gripping (see "Accessories" section of catalog).

- A, a Main / direct connection, gripper opening
B, b Main / direct connection, gripper closing
① Gripper connection

- ② Finger connection
72 Fit for centering sleeves
80 Depth of the centering sleeve hole in the counter part
90 Sensor IN ...

Maximum permitted finger projection

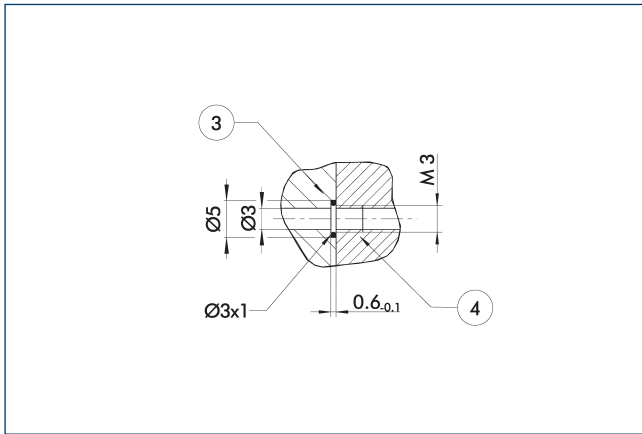


■ Permitted range

■ Inadmissible range

L_{max} is equivalent to the maximum permitted finger length, see the technical data table.

Hose-free direct connection M3

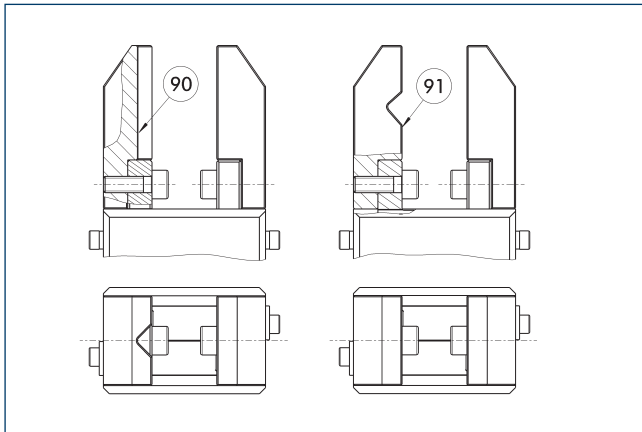


③ Adapter

④ Grippers

The direct connection is used for supplying compressed air without hoses. Instead, the pressure medium is fed through bore-holes in the mounting plate.

Jaw design

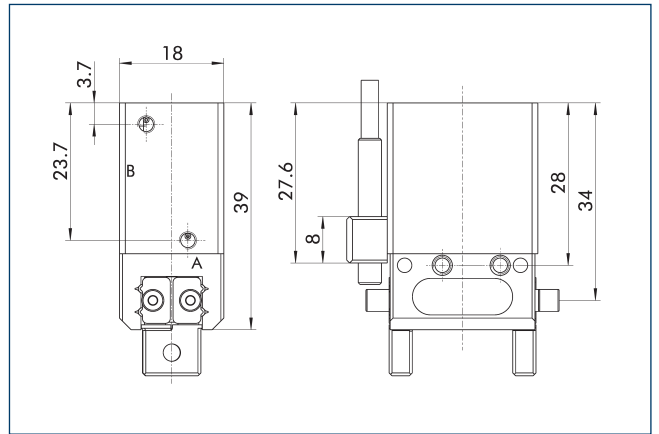


⑨⑩ Vertically positioned prism

⑨① Horizontally positioned prism

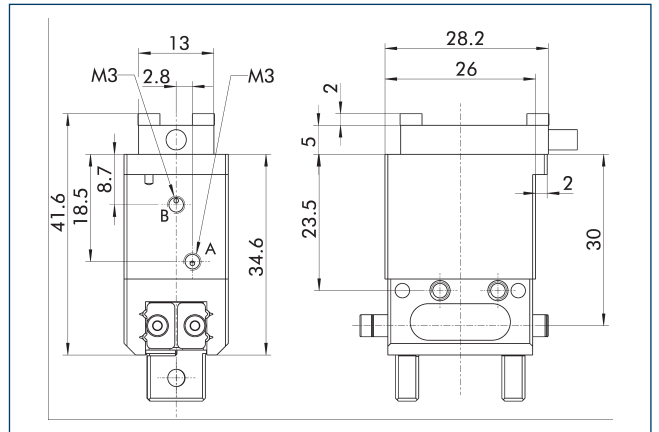
A workpiece, which is gripped using three points of contact, can be reliably gripped with high repeatability. A system with more than three points of contact is overdetermined. The drawing shows two alternative gripper finger designs for coaxial and radial gripping of a cylindrical part.

Gripping force maintenance version AS/IS



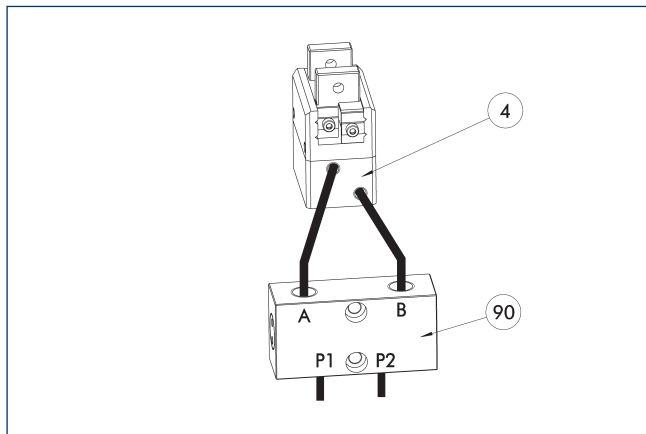
The mechanical gripping force maintenance device ensures that a minimum clamping force will be applied even if there is a drop in pressure. In the AS/S variant this acts as a closing force, in the IS variant as an opening force. Besides this, gripping force maintenance can be used to increase gripping force or for single actuated gripping.

Flexible position sensor



The following FPS position sensor can differentiate between five programmable areas or switching points for the stroke of a gripper, and can be used in connection with a PC as a measuring system.

SDV-P pressure maintenance valve



④ Grippers

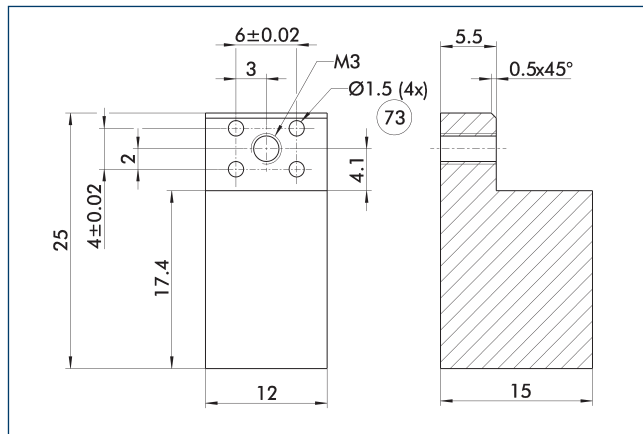
⑨⑩ SDV-P pressure maintenance valve

The SDV-P pressure maintenance valve ensures in emergency STOP situations that the pressure in the piston chamber of pneumatic gripper, swivel, linear, and quick-change modules is temporarily maintained.

Description	ID	Recommended hose diameter [mm]
Pressure maintenance valve		
SDV-P 04	0403130	6
Pressure maintenance valve with air bleed screw		
SDV-P 04-E	0300120	6

① In order to achieve the specified closing and opening time for each gripper variant, the recommended hose diameter must be used. The direct allocation of the respective variant of the gripper for the respective SDV-P can be found at schunk.com.

Finger blanks ABR-MPG-plus 25

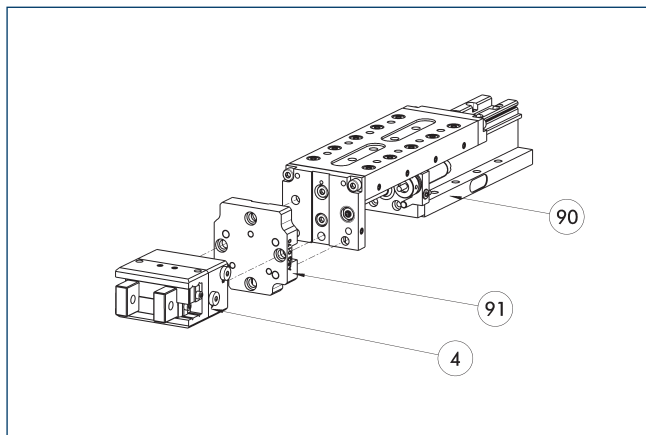


⑦③ Fit for centering pins

The drawing shows the finger blank which can be reworked by the customer.

Description	ID	Material	Scope of delivery
Finger blank			
ABR-MPG-plus 25	0340211	Aluminum (3.4365)	2

Modular Assembly Automation



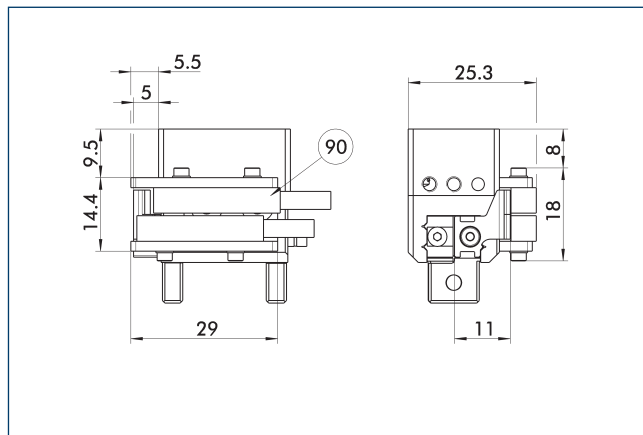
④ Grippers

⑨① ASG adapter plate

⑨② Linear module CLM/KLM/LM/ELP/ELM/ELS/HLM

Grippers and linear modules can be combined with standard adapter plates from the modular assembly system. For more information see our main catalog "Modular Assembly Automation".

Attachment kit for proximity switch



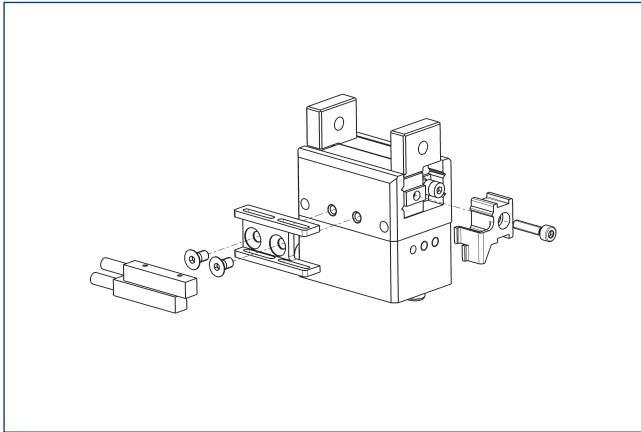
⑨② Sensor IN ...

Attachment kit includes bracket, switch lugs/cams and mounting screws. Proximity switches must be ordered separately.

Description	ID
Attachment kit for proximity switch	
AS-IN5-MPG-plus 25	0340150

① This attachment kit needs to be ordered optionally as an accessory.

Inductive proximity switches

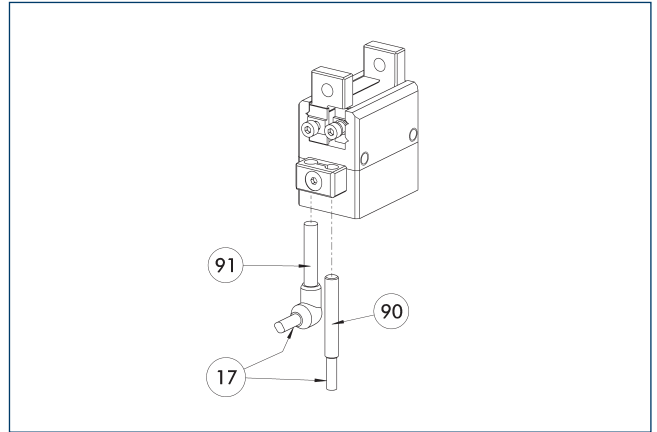


End position monitoring can be mounted with an attachment kit.

Description	ID	Often combined
Attachment kit for proximity switch		
AS-IN5-MPG-plus 25	0340150	
Inductive proximity switch		
IN 5-S-M12	0301569	
IN 5-S-M8	0301469	●
INK 5-S	0301501	●

- ① Two sensors (closer/S) are required for each unit and extension cables are available as an option. This attachment kit needs to be ordered optionally as an accessory. For sensor cables, note the minimum permissible bending radii. These are generally 35 mm.

Inductive proximity switches



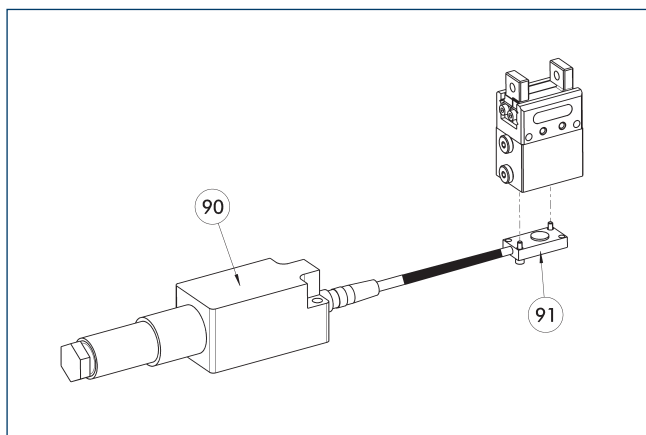
- ①⑦ Cable outlet
①⑨ Sensor IN ...
①⑨ Sensor IN ...

Directly mounted end position monitoring.

Description	ID	Often combined
Inductive proximity switch		
IN 40-S-M12	0301574	
IN 40-S-M8	0301474	●
INK 40-S	0301555	
Inductive proximity switch with lateral cable outlet		
IN 40-S-M12-SA	0301577	
IN 40-S-M8-SA	0301473	●
INK 40-S-SA	0301565	
Connection cables		
KA BG08-L 3P-0300-PNP	0301622	●
KA BG08-L 3P-0500-PNP	0301623	
KA BG12-L 3P-0500-PNP	30016369	
KA BW08-L 3P-0300-PNP	0301594	
KA BW08-L 3P-0500-PNP	0301502	
KA BW12-L 3P-0300-PNP	0301503	
KA BW12-L 3P-0500-PNP	0301507	
Clip for connector/socket		
CLI-M12	0301464	
CLI-M8	0301463	
Cable extension		
KV BG12-SG12 3P-0030-PNP	0301999	
KV BG12-SG12 3P-0060-PNP	0301998	
KV BW08-SG08 3P-0030-PNP	0301495	
KV BW08-SG08 3P-0100-PNP	0301496	
KV BW08-SG08 3P-0200-PNP	0301497	●
KV BW12-SG12 3P-0030-PNP	0301595	
KV BW12-SG12 3P-0100-PNP	0301596	
KV BW12-SG12 3P-0200-PNP	0301597	
Sensor distributor		
V2-M12	0301776	●
V2-M8	0301775	●
V4-M8	0301746	
V8-M8	0301751	

- ① Two sensors are required per unit for monitoring two positions. On option, extension cables and sensor distributors are available. Additional product variants of the sensor, and further information and technical data can be found in the catalog chapter sensor system.

Flexible position sensor



90 FPS-F5 evaluation electronic 91 FPS-S sensor

The FPS monitoring is only possible for this size in combination with the appropriate FPS variant of the gripper.

Description	ID	Often combined
Sensor		
FPS-S 13	0301705	
Evaluation electronics		
FPS-F5	0301805	●
Cable extension		
KV BG08-SG08 3P-0050	0301598	
KV BG08-SG08 3P-0100	0301599	
Connection cables		
KA BG16-L 12P-1000	0301801	
Clip for connector/socket		
CLI-M8	0301463	

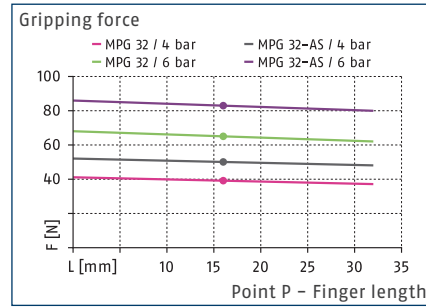
- ① When using an FPS system, an FPS sensor (FPS-S) as well as an electronic processor (FPS-F5 / F5 T) are required for each gripper as well as a mounting kit (AS), if listed. Cable extensions (KV) are optionally available – see catalog chapter "Accessories."

MPG 32

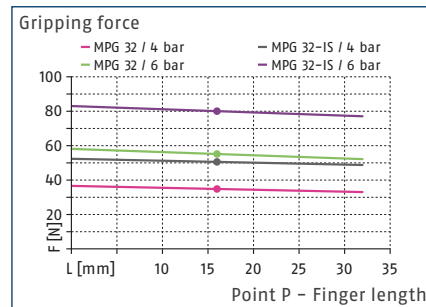
Gripper for small components



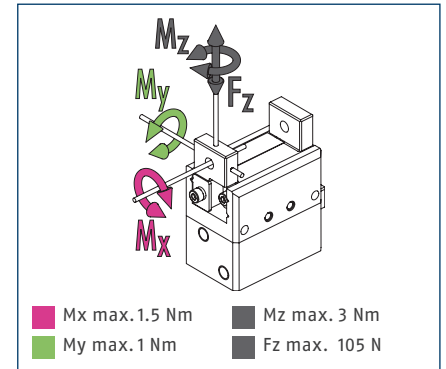
Gripping force O.D. gripping



Gripping force I.D. gripping



Max. loads

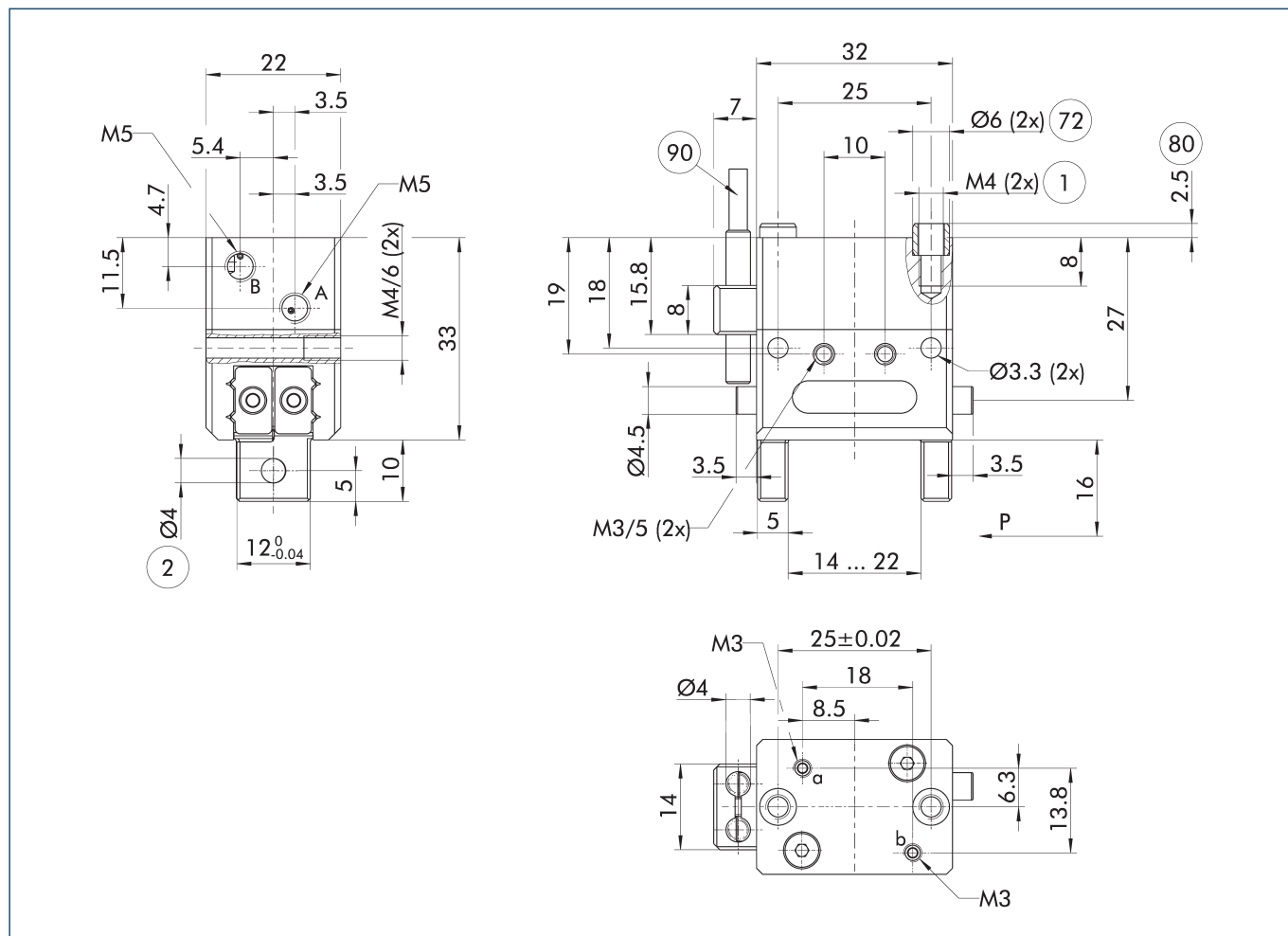


① The indicated moments and forces are statical values, apply for each base jaw and may appear simultaneously. Loads may additionally occur to the moment produced by the gripping force itself.

Technical data

Description		MPG 32	MPG 32-AS	MPG 32-IS	MPG 32-FPS
ID		0340011	0340041	0340061	0340071
Stroke per jaw	[mm]	4	4	4	4
Closing/opening force	[N]	65/55	85/-	-/80	65/55
Min. spring force	[N]		20	25	
Weight	[kg]	0.12	0.14	0.14	0.14
Recommended workpiece weight	[kg]	0.33	0.33	0.33	0.33
Cylinder volume per double stroke	[cm ³]	1.6	4	3.4	1.6
Min./nom./max. operating pressure	[bar]	2/6/8	4/6/6.5	4/6/6.5	2/6/8
Closing/opening time	[s]	0.025/0.025	0.035/0.05	0.05/0.035	0.025/0.025
Closing/opening time with spring	[s]		0.20	0.20	
Max. permissible finger length	[mm]	32	32	32	32
Max. permissible weight per finger	[kg]	0.04	0.04	0.04	0.04
IP protection class		30	30	30	30
Min./max. ambient temperature	[°C]	5/90	5/90	5/90	5/90
Repeat accuracy	[mm]	0.02	0.02	0.02	0.02
Cleanroom class ISO 14644-1		5	5	5	5

Main view



The drawing shows the basic version of the gripper with open jaws, without dimensional consideration of the options described below.

① As an alternative/in addition to spring-assisted mechanical gripping force maintenance, the SDV-P pressure maintenance valve can be used for I.D. and O.D. gripping (see "Accessories" section of catalog).

A, a Main / direct connection, gripper opening

B, b Main / direct connection, gripper closing

① Gripper connection

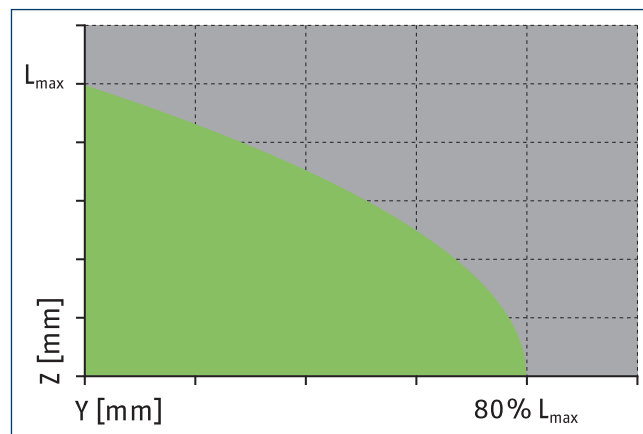
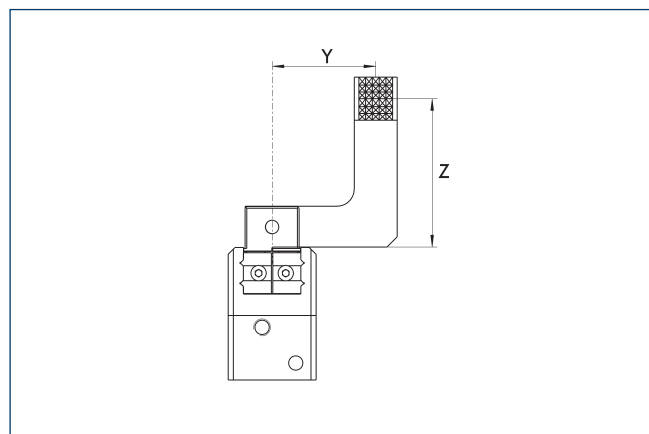
② Finger connection

72 Fit for centering sleeves

80 Depth of the centering sleeve hole in the counter part

90 Sensor IN ...

Maximum permitted finger projection

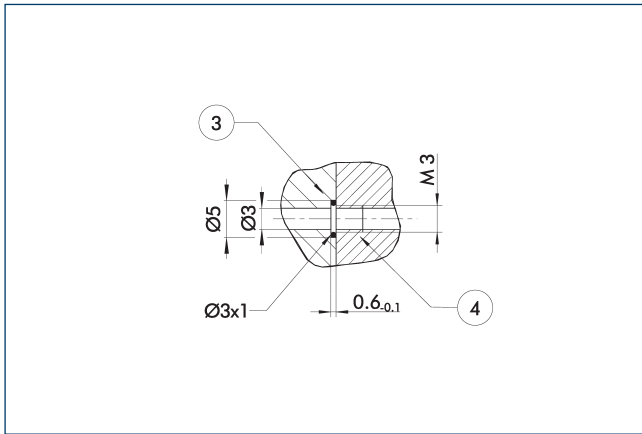


■ Permitted range

■ Inadmissible range

L_{max} is equivalent to the maximum permitted finger length, see the technical data table.

Hose-free direct connection M3

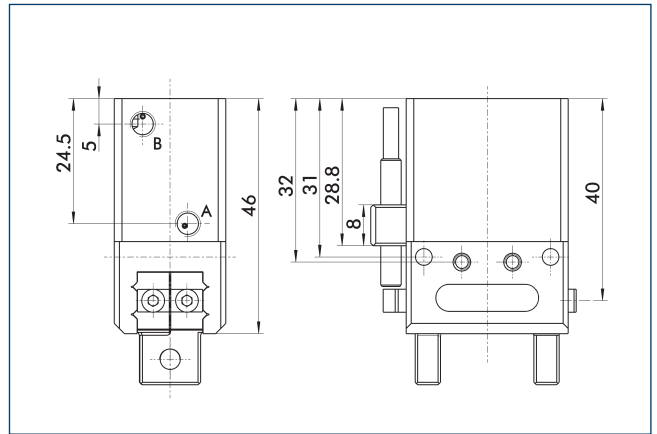


③ Adapter

④ Grippers

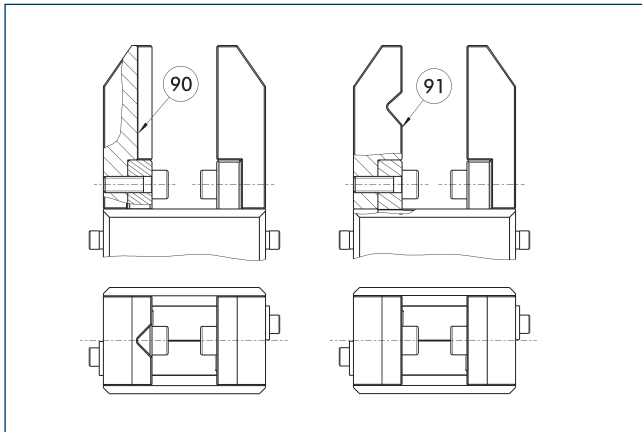
The direct connection is used for supplying compressed air without hoses. Instead, the pressure medium is fed through bore-holes in the mounting plate.

Gripping force maintenance version AS/IS



The mechanical gripping force maintenance device ensures that a minimum clamping force will be applied even if there is a drop in pressure. In the AS/S variant this acts as a closing force, in the IS variant as an opening force. Besides this, gripping force maintenance can be used to increase gripping force or for single actuated gripping.

Jaw design

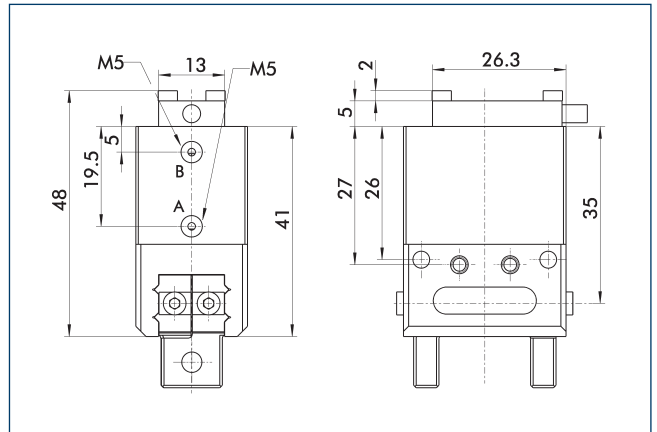


⑨⑩ Vertically positioned prism

⑨① Horizontally positioned prism

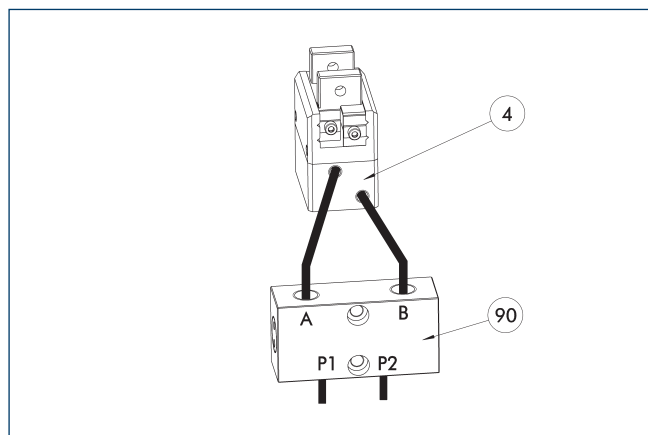
A workpiece, which is gripped using three points of contact, can be reliably gripped with high repeatability. A system with more than three points of contact is overdetermined. The drawing shows two alternative gripper finger designs for coaxial and radial gripping of a cylindrical part.

Flexible position sensor



The following FPS position sensor can differentiate between five programmable areas or switching points for the stroke of a gripper, and can be used in connection with a PC as a measuring system.

SDV-P pressure maintenance valve



④ Grippers

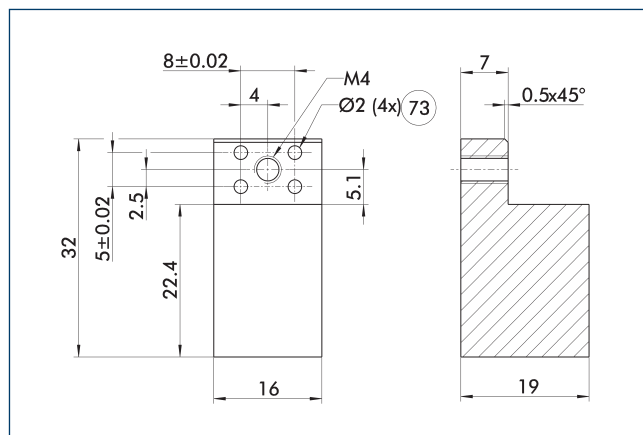
⑨⑩ SDV-P pressure maintenance valve

The SDV-P pressure maintenance valve ensures in emergency STOP situations that the pressure in the piston chamber of pneumatic gripper, swivel, linear, and quick-change modules is temporarily maintained.

Description	ID	Recommended hose diameter [mm]
Pressure maintenance valve		
SDV-P 04	0403130	6
Pressure maintenance valve with air bleed screw		
SDV-P 04-E	0300120	6

① In order to achieve the specified closing and opening time for each gripper variant, the recommended hose diameter must be used. The direct allocation of the respective variant of the gripper for the respective SDV-P can be found at schunk.com.

Finger blanks ABR-MPG-plus 32

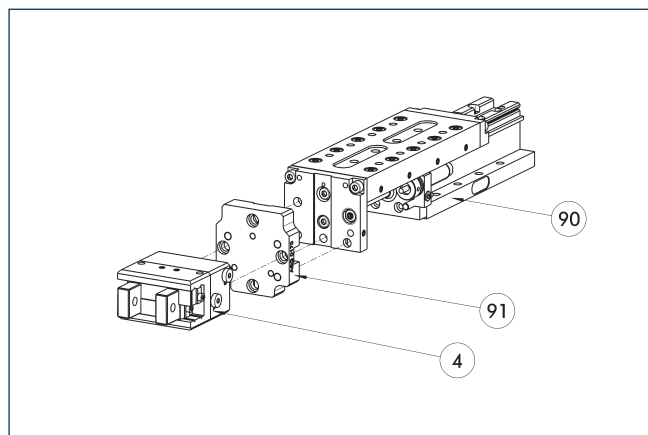


⑦③ Fit for centering pins

The drawing shows the finger blank which can be reworked by the customer.

Description	ID	Material	Scope of delivery
Finger blank			
ABR-MPG-plus 32	0340212	Aluminum (3.4365)	2

Modular Assembly Automation



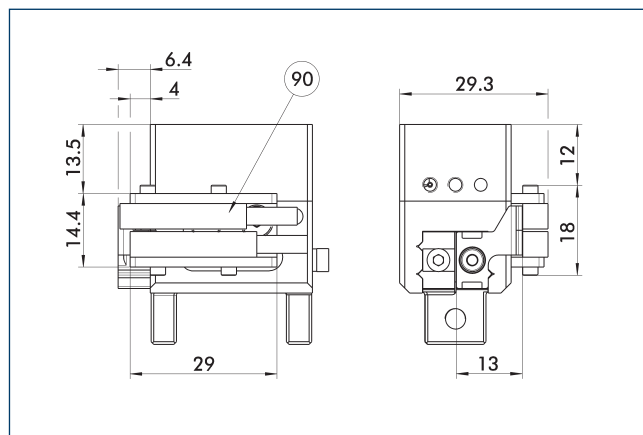
④ Grippers

⑨① ASG adapter plate

⑨⑩ Linear module CLM/KLM/LM/ELP/ELM/ELS/HLM

Grippers and linear modules can be combined with standard adapter plates from the modular assembly system. For more information see our main catalog "Modular Assembly Automation".

Attachment kit for proximity switch



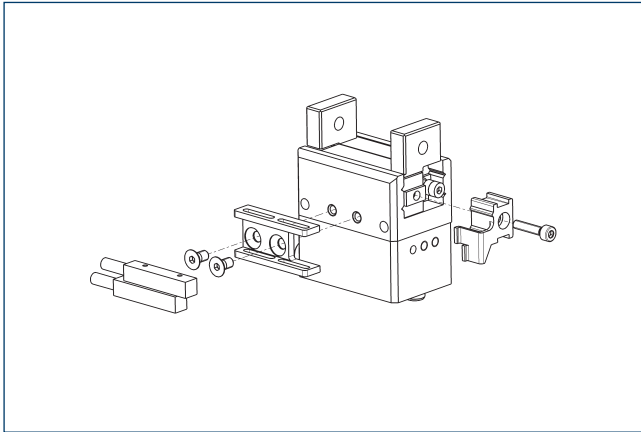
⑨⑩ Sensor IN ...

Attachment kit includes bracket, switch lugs/cams and mounting screws. Proximity switches must be ordered separately.

Description	ID
Attachment kit for proximity switch	
AS-IN5-MPG-plus 32	0340151

① This attachment kit needs to be ordered optionally as an accessory.

Inductive proximity switches

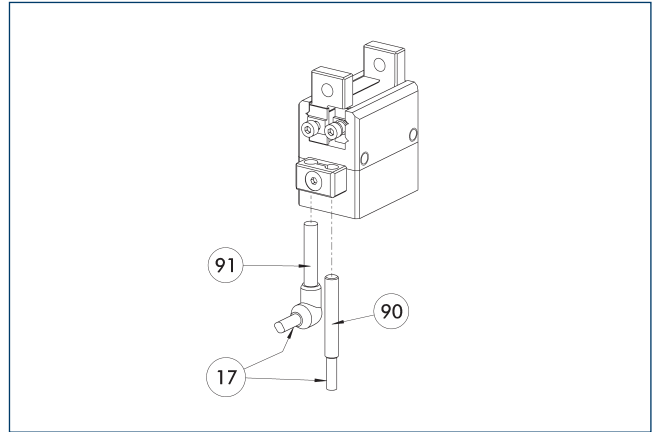


End position monitoring can be mounted with an attachment kit.

Description	ID	Often combined
Attachment kit for proximity switch		
AS-IN5-MPG-plus 32	0340151	
Inductive proximity switch		
IN 5-S-M12	0301569	
IN 5-S-M8	0301469	●
INK 5-S	0301501	●

- ① Two sensors (closer/S) are required for each unit and extension cables are available as an option. This attachment kit needs to be ordered optionally as an accessory. For sensor cables, note the minimum permissible bending radii. These are generally 35 mm.

Inductive proximity switches



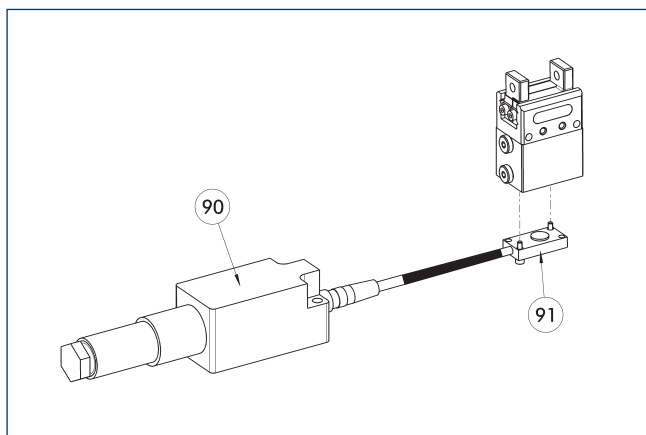
- ①⑦ Cable outlet
①⑨ Sensor IN ...
①⑨ Sensor IN ...

Directly mounted end position monitoring.

Description	ID	Often combined
Inductive proximity switch		
IN 40-S-M12	0301574	
IN 40-S-M8	0301474	●
INK 40-S	0301555	
Inductive proximity switch with lateral cable outlet		
IN 40-S-M12-SA	0301577	
IN 40-S-M8-SA	0301473	●
INK 40-S-SA	0301565	
Connection cables		
KA BG08-L 3P-0300-PNP	0301622	●
KA BG08-L 3P-0500-PNP	0301623	
KA BG12-L 3P-0500-PNP	30016369	
KA BW08-L 3P-0300-PNP	0301594	
KA BW08-L 3P-0500-PNP	0301502	
KA BW12-L 3P-0300-PNP	0301503	
KA BW12-L 3P-0500-PNP	0301507	
Clip for connector/socket		
CLI-M12	0301464	
CLI-M8	0301463	
Cable extension		
KV BG12-SG12 3P-0030-PNP	0301999	
KV BG12-SG12 3P-0060-PNP	0301998	
KV BW08-SG08 3P-0030-PNP	0301495	
KV BW08-SG08 3P-0100-PNP	0301496	
KV BW08-SG08 3P-0200-PNP	0301497	●
KV BW12-SG12 3P-0030-PNP	0301595	
KV BW12-SG12 3P-0100-PNP	0301596	
KV BW12-SG12 3P-0200-PNP	0301597	
Sensor distributor		
V2-M12	0301776	●
V2-M8	0301775	●
V4-M8	0301746	
V8-M8	0301751	

- ① Two sensors are required per unit for monitoring two positions. On option, extension cables and sensor distributors are available. Additional product variants of the sensor, and further information and technical data can be found in the catalog chapter sensor system.

Flexible position sensor



90 FPS-F5 evaluation electronic 91 FPS-S sensor

The FPS monitoring is only possible for this size in combination with the appropriate FPS variant of the gripper.

Description	ID	Often combined
Sensor		
FPS-S 13	0301705	
Evaluation electronics		
FPS-F5	0301805	●
Cable extension		
KV BG08-SG08 3P-0050	0301598	
KV BG08-SG08 3P-0100	0301599	
Connection cables		
KA BG16-L 12P-1000	0301801	
Clip for connector/socket		
CLI-M8	0301463	

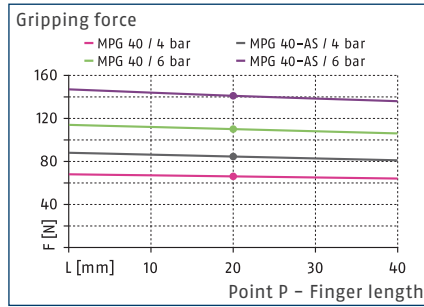
- ① When using an FPS system, an FPS sensor (FPS-S) as well as an electronic processor (FPS-F5 / F5 T) are required for each gripper as well as a mounting kit (AS), if listed. Cable extensions (KV) are optionally available – see catalog chapter "Accessories."

MPG 40

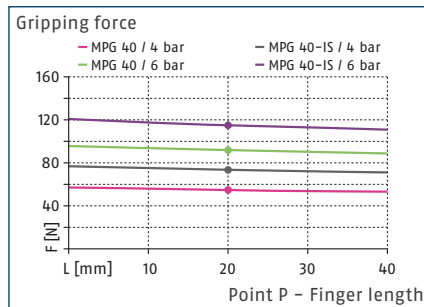
Gripper for small components



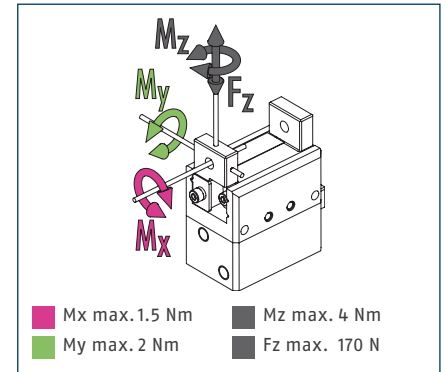
Gripping force O.D. gripping



Gripping force I.D. gripping



Max. loads

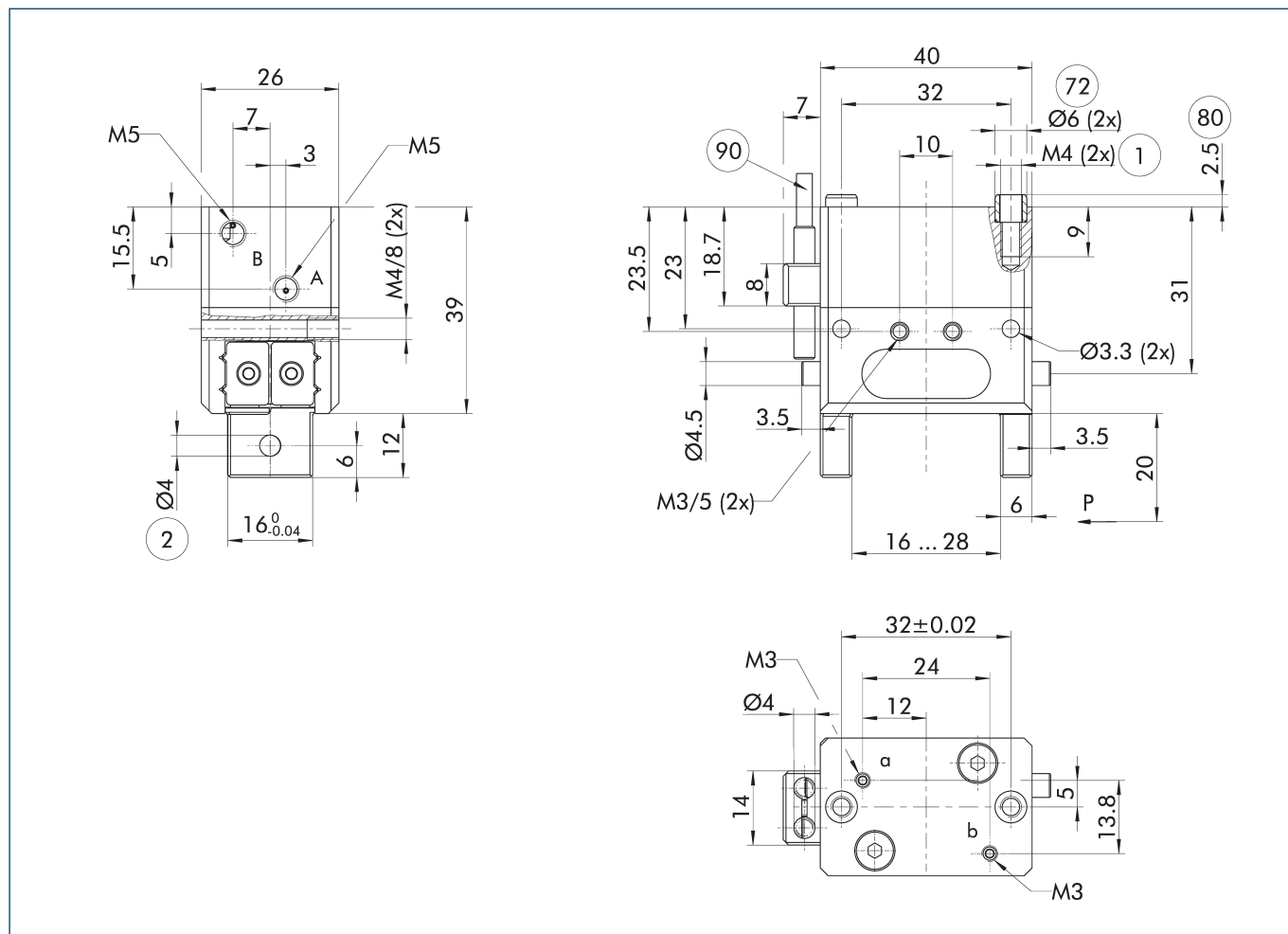


① The indicated moments and forces are statical values, apply for each base jaw and may appear simultaneously. Loads may additionally occur to the moment produced by the gripping force itself.

Technical data

Description		MPG 40	MPG 40-AS	MPG 40-IS
ID		0340012	0340042	0340062
Stroke per jaw	[mm]	6	6	6
Closing/opening force	[N]	110/90	145/-	-/115
Min. spring force	[N]		35	25
Weight	[kg]	0.2	0.26	0.26
Recommended workpiece weight	[kg]	0.55	0.55	0.55
Cylinder volume per double stroke	[cm ³]	3.6	10.4	8.5
Min./nom./max. operating pressure	[bar]	2/6/8	4/6/6.5	4/6/6.5
Closing/opening time	[s]	0.05/0.05	0.055/0.08	0.08/0.055
Closing/opening time with spring	[s]		0.20	0.20
Max. permissible finger length	[mm]	40	40	40
Max. permissible weight per finger	[kg]	0.08	0.08	0.08
IP protection class		30	30	30
Min./max. ambient temperature	[°C]	5/90	5/90	5/90
Repeat accuracy	[mm]	0.02	0.02	0.02
Cleanroom class ISO 14644-1		5	5	5

Main view



The drawing shows the basic version of the gripper with open jaws, without dimensional consideration of the options described below.

① As an alternative/in addition to spring-assisted mechanical gripping force maintenance, the SDV-P pressure maintenance valve can be used for I.D. and O.D. gripping (see "Accessories" section of catalog).

A, a Main / direct connection, gripper opening

B, b Main / direct connection, gripper closing

① Gripper connection

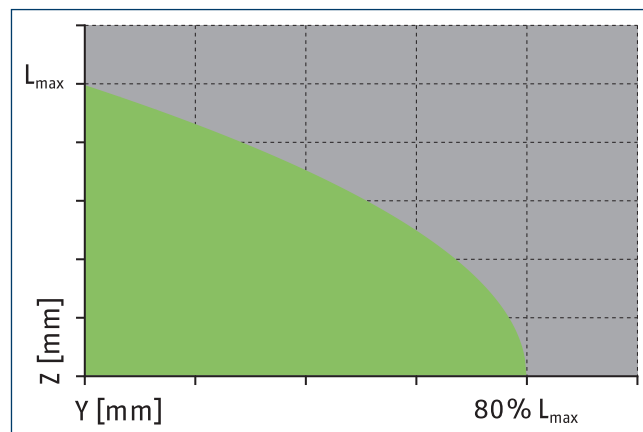
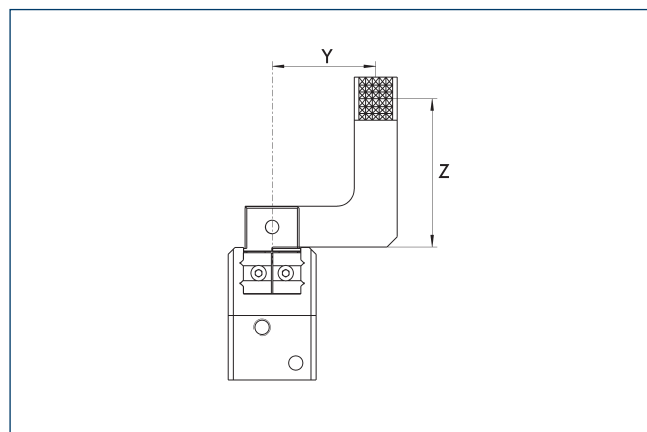
② Finger connection

72 Fit for centering sleeves

80 Depth of the centering sleeve hole in the counter part

90 Sensor IN ...

Maximum permitted finger projection

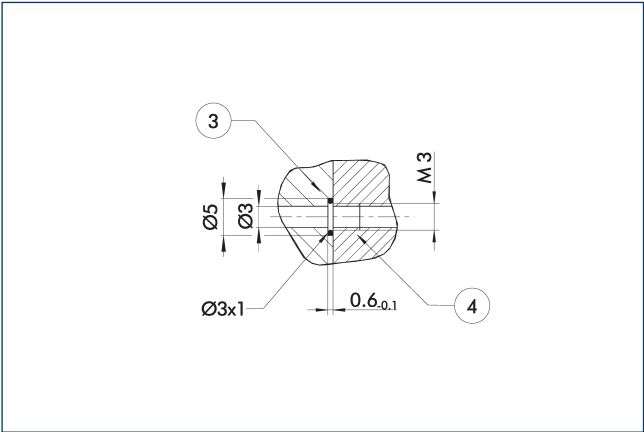


■ Permitted range

■ Inadmissible range

L_{max} is equivalent to the maximum permitted finger length, see the technical data table.

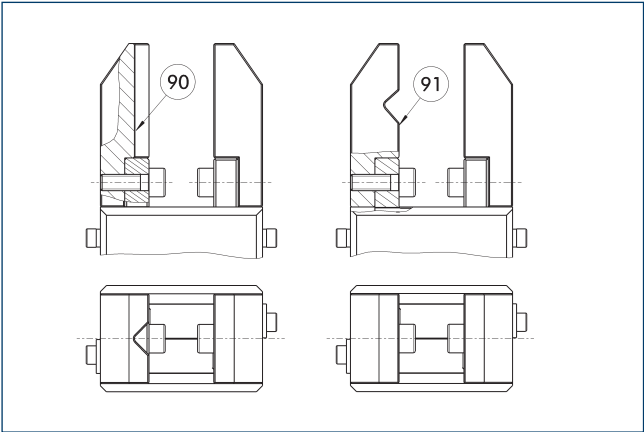
Hose-free direct connection M3



③ Adapter ④ Grippers

The direct connection is used for supplying compressed air without hoses. Instead, the pressure medium is fed through bore-holes in the mounting plate.

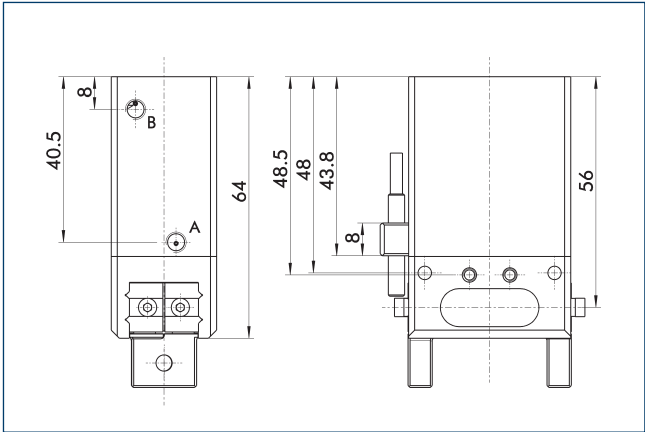
Jaw design



⑨0 Vertically positioned prism ⑨1 Horizontally positioned prism

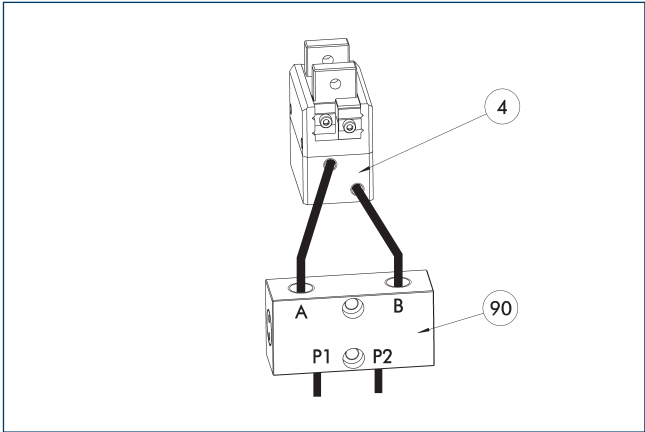
A workpiece, which is gripped using three points of contact, can be reliably gripped with high repeatability. A system with more than three points of contact is overdetermined. The drawing shows two alternative gripper finger designs for coaxial and radial gripping of a cylindrical part.

Gripping force maintenance version AS/IS



The mechanical gripping force maintenance device ensures that a minimum clamping force will be applied even if there is a drop in pressure. In the AS/S variant this acts as a closing force, in the IS variant as an opening force. Besides this, gripping force maintenance can be used to increase gripping force or for single actuated gripping.

SDV-P pressure maintenance valve



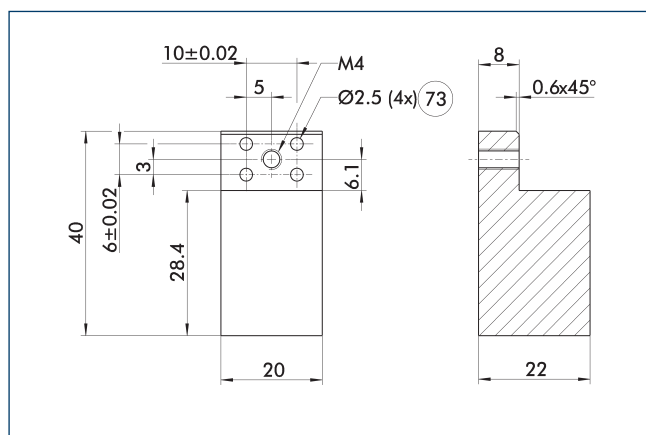
④ Grippers ⑨0 SDV-P pressure maintenance valve

The SDV-P pressure maintenance valve ensures in emergency STOP situations that the pressure in the piston chamber of pneumatic gripper, swivel, linear, and quick-change modules is temporarily maintained.

Description	ID	Recommended hose diameter
		[mm]
Pressure maintenance valve		
SDV-P 04	0403130	6
Pressure maintenance valve with air bleed screw		
SDV-P 04-E	0300120	6

① In order to achieve the specified closing and opening time for each gripper variant, the recommended hose diameter must be used. The direct allocation of the respective variant of the gripper for the respective SDV-P can be found at schunk.com.

Finger blanks ABR-MPG-plus 40

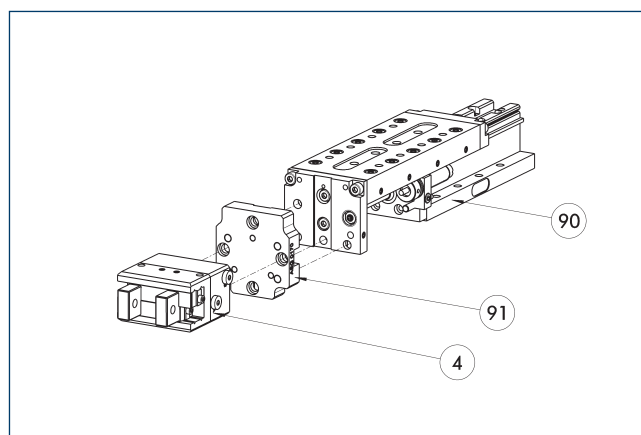


73 Fit for centering pins

The drawing shows the finger blank which can be reworked by the customer.

Description	ID	Material	Scope of delivery
Finger blank			
ABR-MPG-plus 40	0340213	Aluminum (3.4365)	2

Modular Assembly Automation



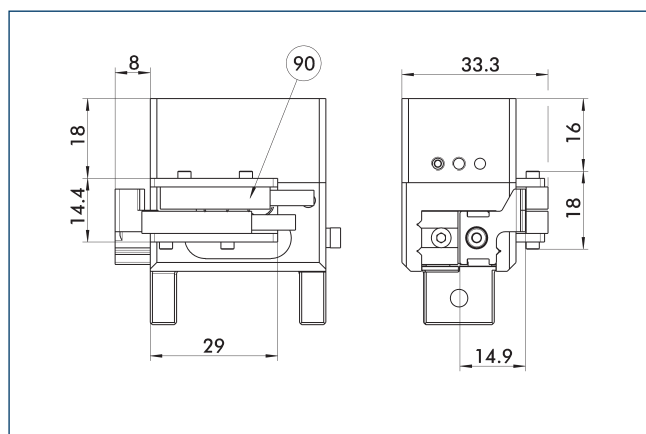
4 Grippers

91 ASG adapter plate

90 Linear module CLM/KLM/LM/ELP/
ELM/ELS/HLM

Grippers and linear modules can be combined with standard adapter plates from the modular assembly system. For more information see our main catalog "Modular Assembly Automation".

Attachment kit for proximity switch



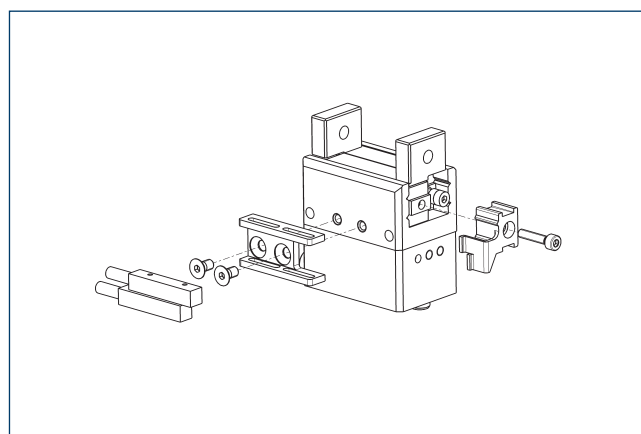
90 Sensor IN ...

Attachment kit includes bracket, switch lugs/cams and mounting screws. Proximity switches must be ordered separately.

Description	ID	
Attachment kit for proximity switch		
AS-IN5-MPG-plus 40	0340152	

1 This attachment kit needs to be ordered optionally as an accessory.

Inductive proximity switches

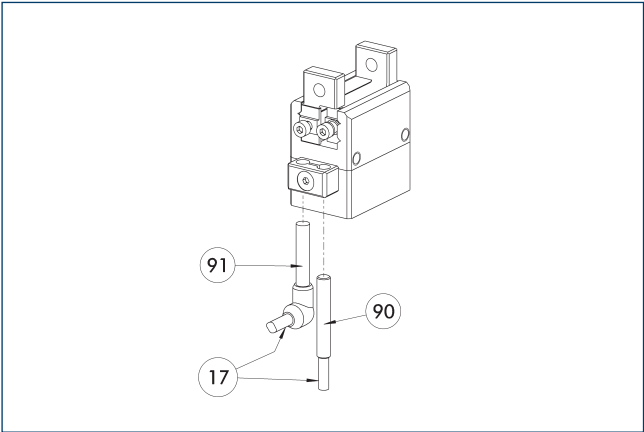


End position monitoring can be mounted with an attachment kit.

Description	ID	Often combined
Attachment kit for proximity switch		
AS-IN5-MPG-plus 40	0340152	
Inductive proximity switch		
IN 5-S-M12	0301569	
IN 5-S-M8	0301469	●
INK 5-S	0301501	●

1 Two sensors (closer/S) are required for each unit and extension cables are available as an option. This attachment kit needs to be ordered optionally as an accessory. For sensor cables, note the minimum permissible bending radii. These are generally 35 mm.

Inductive proximity switches



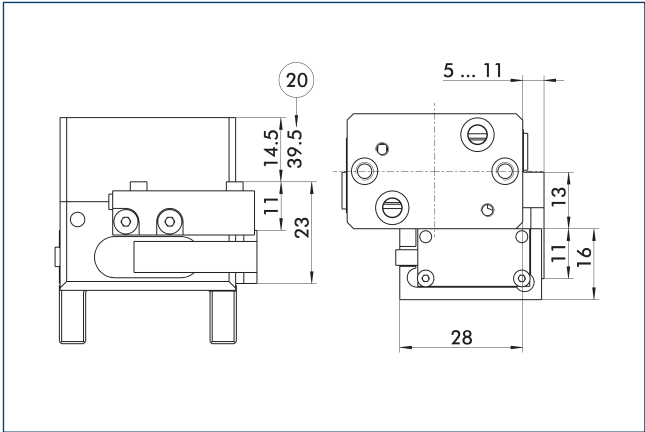
- 17 Cable outlet
- 91 Sensor IN...-SA
- 90 Sensor IN ...

Directly mounted end position monitoring.

Description	ID	Often combined
Inductive proximity switch		
IN 40-S-M12	0301574	
IN 40-S-M8	0301474	●
INK 40-S	0301555	
Inductive proximity switch with lateral cable outlet		
IN 40-S-M12-SA	0301577	
IN 40-S-M8-SA	0301473	●
INK 40-S-SA	0301565	
Connection cables		
KA BG08-L 3P-0300-PNP	0301622	●
KA BG08-L 3P-0500-PNP	0301623	
KA BG12-L 3P-0500-PNP	30016369	
KA BW08-L 3P-0300-PNP	0301594	
KA BW08-L 3P-0500-PNP	0301502	
KA BW12-L 3P-0300-PNP	0301503	
KA BW12-L 3P-0500-PNP	0301507	
Clip for connector/socket		
CLI-M12	0301464	
CLI-M8	0301463	
Cable extension		
KV BG12-SG12 3P-0030-PNP	0301999	
KV BG12-SG12 3P-0060-PNP	0301998	
KV BW08-SG08 3P-0030-PNP	0301495	
KV BW08-SG08 3P-0100-PNP	0301496	
KV BW08-SG08 3P-0200-PNP	0301497	●
KV BW12-SG12 3P-0030-PNP	0301595	
KV BW12-SG12 3P-0100-PNP	0301596	
KV BW12-SG12 3P-0200-PNP	0301597	
Sensor distributor		
V2-M12	0301776	●
V2-M8	0301775	●
V4-M8	0301746	
V8-M8	0301751	

① Two sensors are required per unit for monitoring two positions. On option, extension cables and sensor distributors are available. Additional product variants of the sensor, and further information and technical data can be found in the catalog chapter sensor system.

Attachment kit for FPS



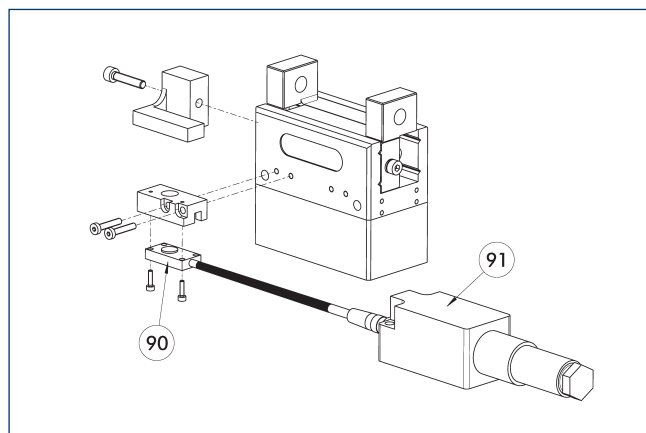
- 20 For version AS/IS

The following FPS position sensor can differentiate between five programmable areas or switching points for the stroke of a gripper, and can be used in connection with a PC as a measuring system.

Description	ID	
Attachment kit for FPS		
AS-FPS-MPG-plus 40	0301762	

① This attachment kit needs to be ordered optionally as an accessory.

Flexible position sensor



90 FPS-S sensor

91 FPS-F5 evaluation electronic

Flexible position monitoring of up to five positions.

Description	ID	Often combined
Attachment kit for FPS		
AS-FPS-MPG-plus 40	0301762	
Sensor		
FPS-S 13	0301705	
Evaluation electronics		
FPS-F5	0301805	●
Cable extension		
KV BG08-SG08 3P-0050	0301598	
KV BG08-SG08 3P-0100	0301599	

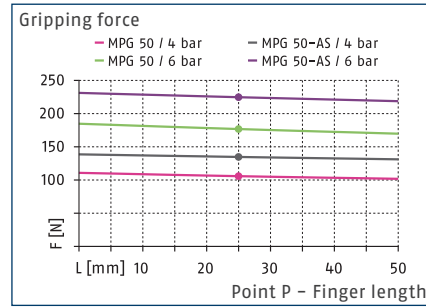
- ① When using an FPS system, an FPS sensor (FPS-S) as well as an electronic processor (FPS-F5 / F5 T) are required for each gripper as well as a mounting kit (AS), if listed. Cable extensions (KV) are optionally available – see catalog chapter “Accessories.”

MPG 50

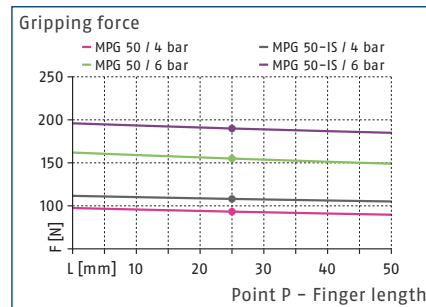
Gripper for small components



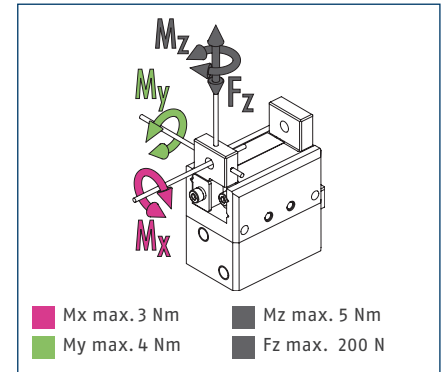
Gripping force O.D. gripping



Gripping force I.D. gripping



Max. loads

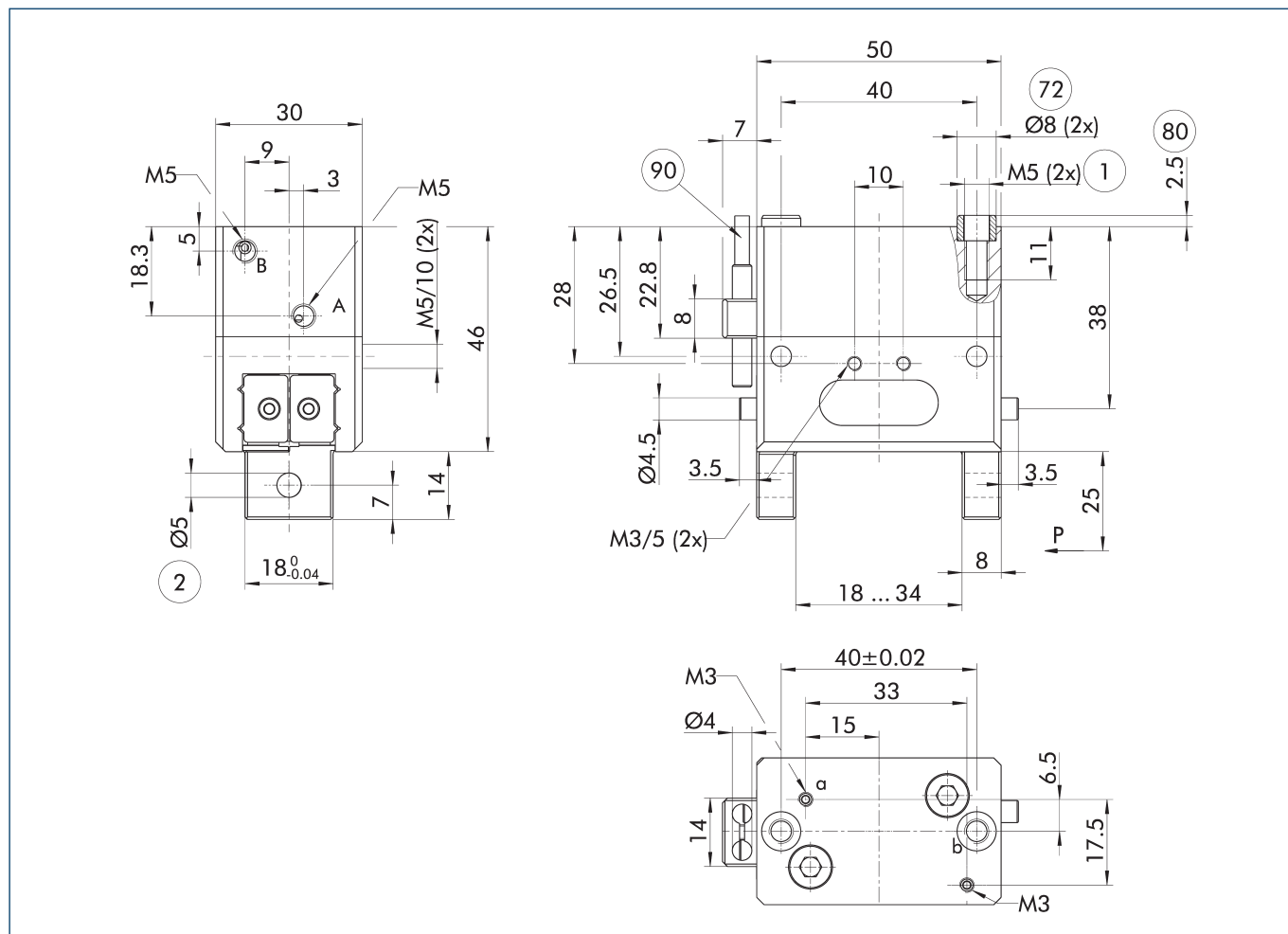


① The indicated moments and forces are static values, apply for each base jaw and may appear simultaneously. Loads may additionally occur to the moment produced by the gripping force itself.

Technical data

Description		MPG 50	MPG 50-AS	MPG 50-IS
ID		0340013	0340043	0340063
Stroke per jaw	[mm]	8	8	8
Closing/opening force	[N]	175/155	225/-	-/190
Min. spring force	[N]		50	35
Weight	[kg]	0.35	0.4	0.4
Recommended workpiece weight	[kg]	0.9	0.9	0.9
Cylinder volume per double stroke	[cm ³]	7.2	15.5	12.1
Min./nom./max. operating pressure	[bar]	2/6/8	4/6/6.5	4/6/6.5
Closing/opening time	[s]	0.035/0.035	0.035/0.05	0.05/0.035
Closing/opening time with spring	[s]		0.30	0.30
Max. permissible finger length	[mm]	50	50	50
Max. permissible weight per finger	[kg]	0.14	0.14	0.14
IP protection class		30	30	30
Min./max. ambient temperature	[°C]	5/90	5/90	5/90
Repeat accuracy	[mm]	0.02	0.02	0.02
Cleanroom class ISO 14644-1		5	5	5

Main view



The drawing shows the basic version of the gripper with open jaws, without dimensional consideration of the options described below.

① As an alternative/in addition to spring-assisted mechanical gripping force maintenance, the SDV-P pressure maintenance valve can be used for I.D. and O.D. gripping (see "Accessories" section of catalog).

A, a Main / direct connection, gripper opening

B, b Main / direct connection, gripper closing

① Gripper connection

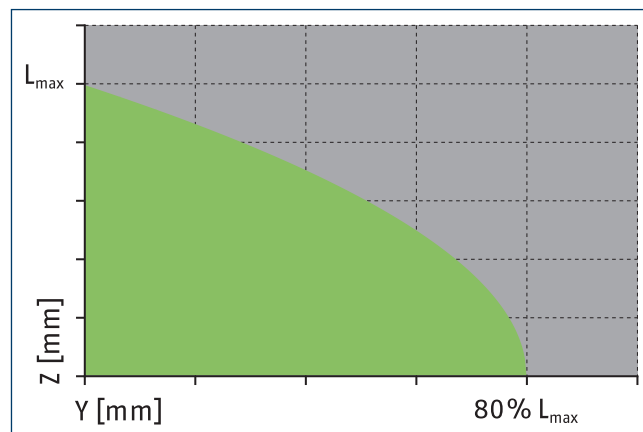
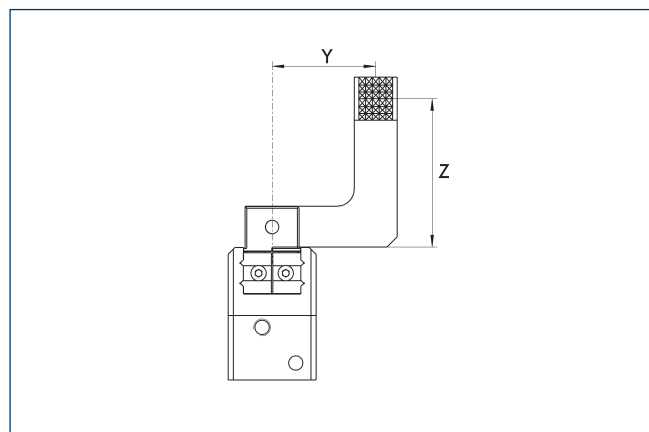
② Finger connection

⑦② Fit for centering sleeves

⑧① Depth of the centering sleeve hole in the counter part

⑨① Sensor IN ...

Maximum permitted finger projection

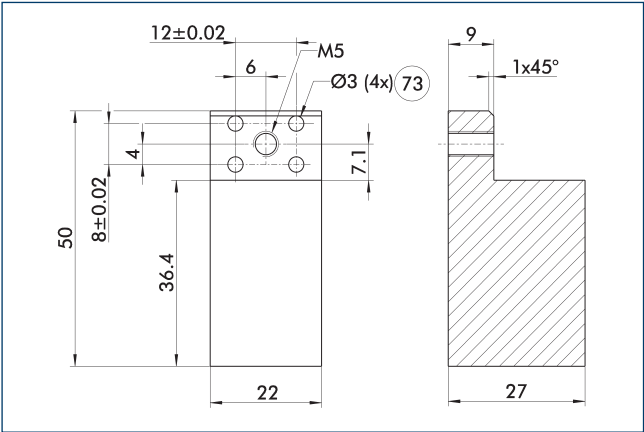


■ Permitted range

■ Inadmissible range

L_{max} is equivalent to the maximum permitted finger length, see the technical data table.

Finger blanks ABR-MPG-plus 50

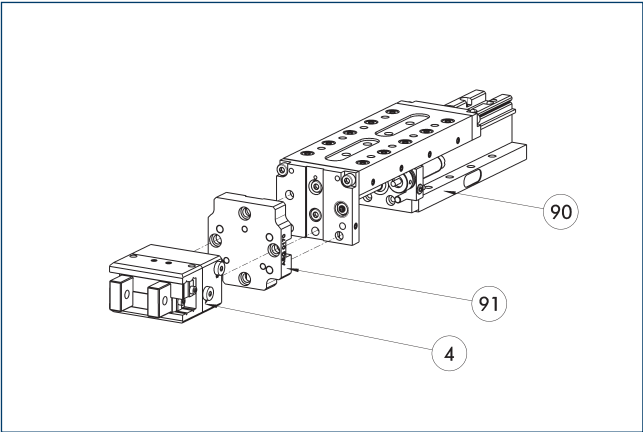


73 Fit for centering pins

The drawing shows the finger blank which can be reworked by the customer.

Description	ID	Material	Scope of delivery
Finger blank			
ABR-MPG-plus 50	0340214	Aluminum (3.4365)	2

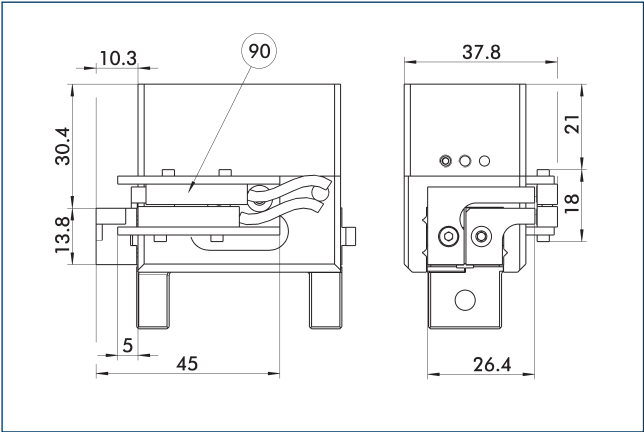
Modular Assembly Automation



- 4 Grippers
- 90 Linear module CLM/KLM/LM/ELP/ELM/ELS/HLM
- 91 ASG adapter plate

Grippers and linear modules can be combined with standard adapter plates from the modular assembly system. For more information see our main catalog "Modular Assembly Automation".

Attachment kit for proximity switch



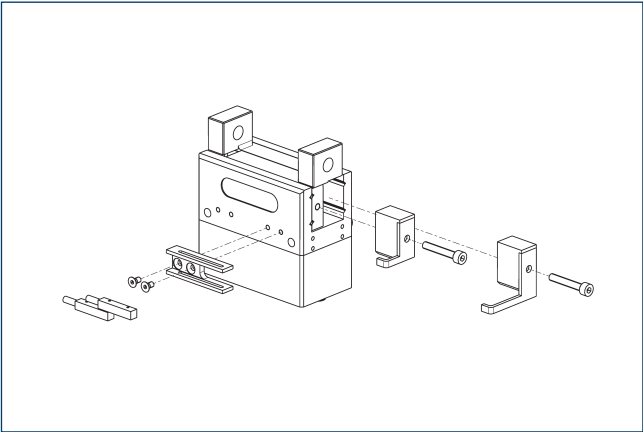
90 Sensor IN ...

End position monitoring can be mounted with an attachment kit.

Description	ID	
Attachment kit for proximity switch		
AS-IN5-MPG-plus 50	0340153	

1 This attachment kit needs to be ordered optionally as an accessory.

Inductive proximity switches

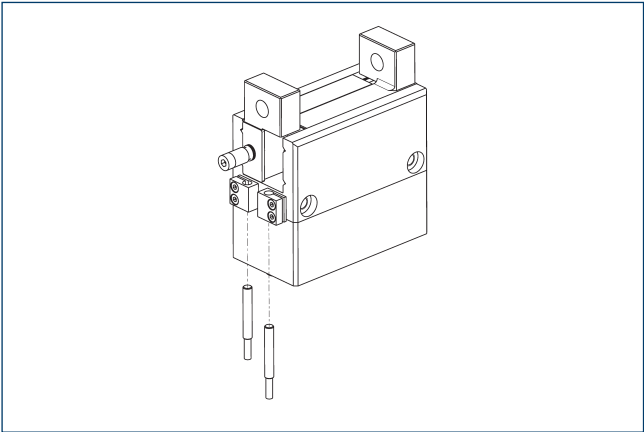


End position monitoring can be mounted with an attachment kit.

Description	ID	Often combined
Attachment kit for proximity switch		
AS-IN5-MPG-plus 50	0340153	
Inductive proximity switch		
IN 5-S-M12	0301569	
IN 5-S-M8	0301469	●
INK 5-S	0301501	●

1 Two sensors (closer/S) are required for each unit and extension cables are available as an option. This attachment kit needs to be ordered optionally as an accessory. For sensor cables, note the minimum permissible bending radii. These are generally 35 mm.

Inductive proximity switches

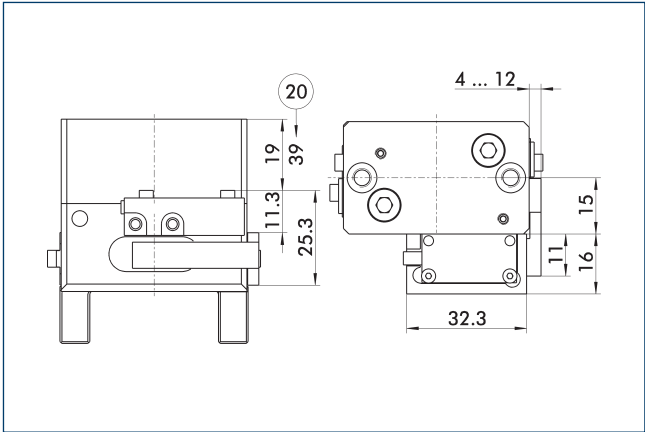


Directly mounted end position monitoring.

Description	ID	Often combined
Inductive proximity switch		
IN 40-S-M12	0301574	
IN 40-S-M8	0301474	●
INK 40-S	0301555	
Connection cables		
KA BG08-L 3P-0300-PNP	0301622	●
KA BG08-L 3P-0500-PNP	0301623	
KA BG12-L 3P-0500-PNP	30016369	
KA BW08-L 3P-0300-PNP	0301594	
KA BW08-L 3P-0500-PNP	0301502	
KA BW12-L 3P-0300-PNP	0301503	
KA BW12-L 3P-0500-PNP	0301507	
Clip for connector/socket		
CLI-M12	0301464	
CLI-M8	0301463	
Cable extension		
KV BG12-SG12 3P-0030-PNP	0301999	
KV BG12-SG12 3P-0060-PNP	0301998	
KV BW08-SG08 3P-0030-PNP	0301495	
KV BW08-SG08 3P-0100-PNP	0301496	
KV BW08-SG08 3P-0200-PNP	0301497	●
KV BW12-SG12 3P-0030-PNP	0301595	
KV BW12-SG12 3P-0100-PNP	0301596	
KV BW12-SG12 3P-0200-PNP	0301597	
Sensor distributor		
V2-M12	0301776	●
V2-M8	0301775	●
V4-M8	0301746	
V8-M8	0301751	

① Two sensors are required per unit for monitoring two positions. On option, extension cables and sensor distributors are available. Additional product variants of the sensor, and further information and technical data can be found in the catalog chapter sensor system.

Attachment kit for FPS



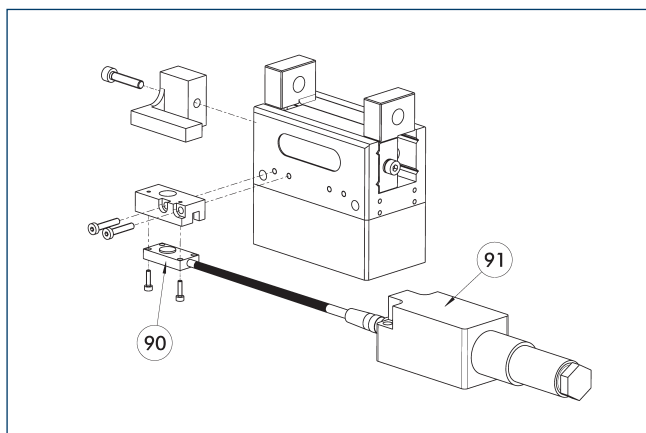
② For version AS/IS

The following FPS position sensor can differentiate between five programmable areas or switching points for the stroke of a gripper, and can be used in connection with a PC as a measuring system.

Description	ID	
Attachment kit for FPS		
AS-FPS-MPG-plus 50	0301763	

① This attachment kit needs to be ordered optionally as an accessory.

Flexible position sensor



90 FPS-S sensor

91 FPS-F5 evaluation electronic

Flexible position monitoring of up to five positions.

Description	ID	Often combined
Attachment kit for FPS		
AS-FPS-MPG-plus 50	0301763	
Sensor		
FPS-S 13	0301705	
Evaluation electronics		
FPS-F5	0301805	●
Cable extension		
KV BG08-SG08 3P-0050	0301598	
KV BG08-SG08 3P-0100	0301599	

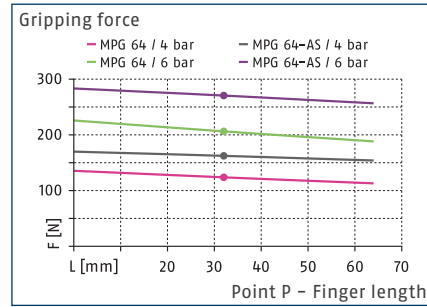
- ① When using an FPS system, an FPS sensor (FPS-S) as well as an electronic processor (FPS-F5 / F5 T) are required for each gripper as well as a mounting kit (AS), if listed. Cable extensions (KV) are optionally available – see catalog chapter “Accessories.”

MPG 64

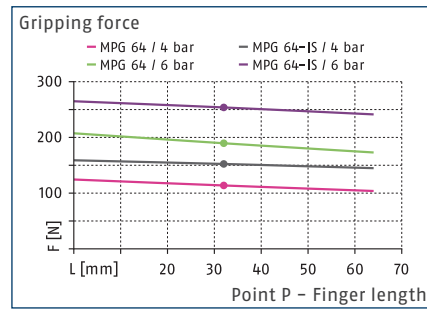
Gripper for small components



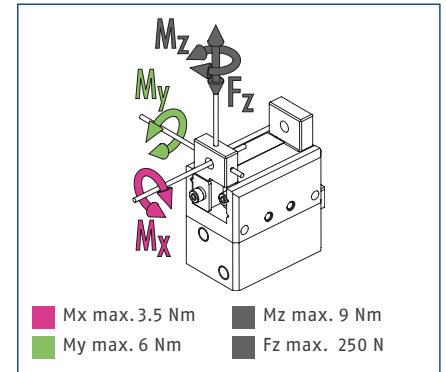
Gripping force O.D. gripping



Gripping force I.D. gripping



Max. loads

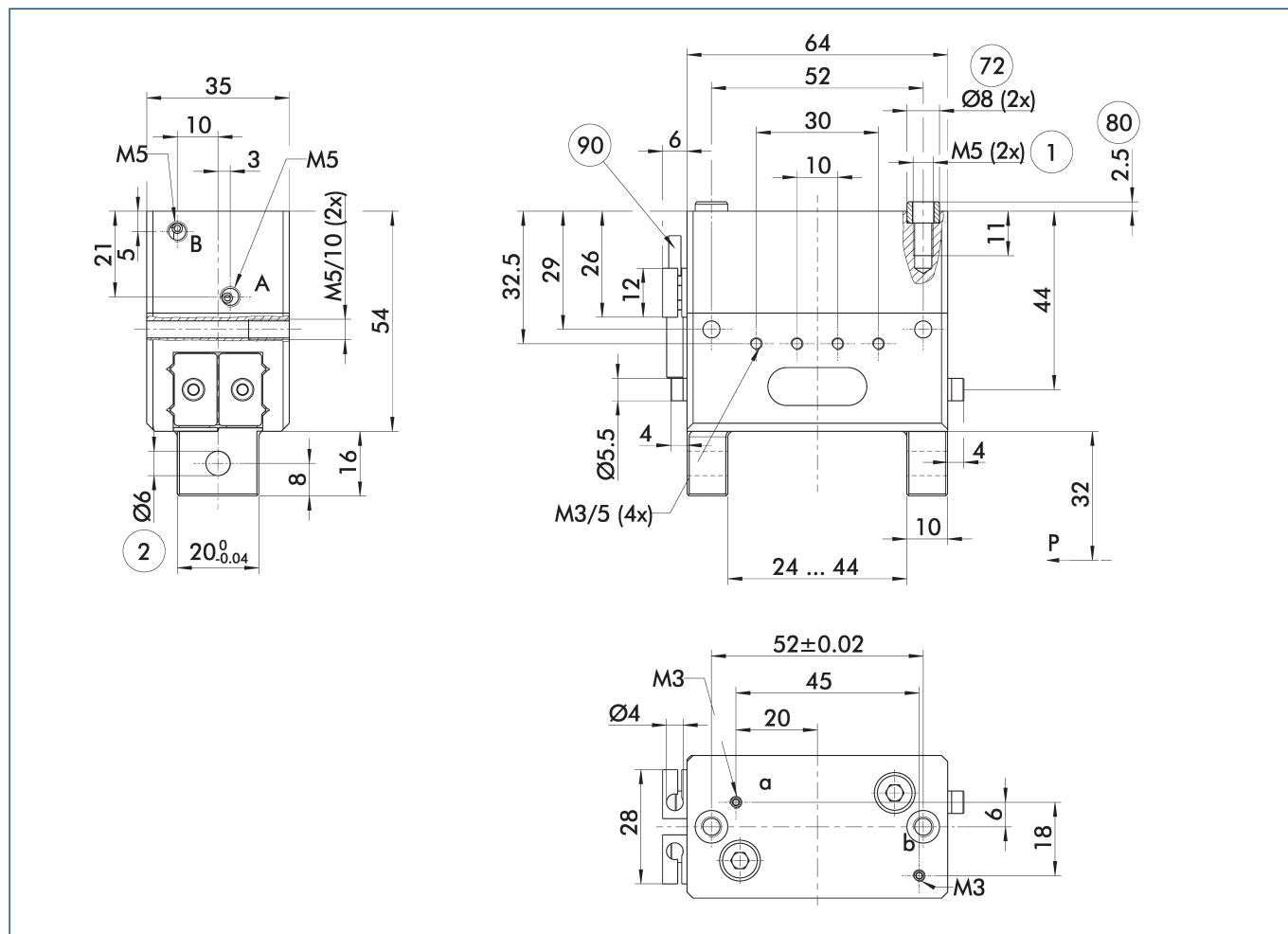


① The indicated moments and forces are statical values, apply for each base jaw and may appear simultaneously. Loads may additionally occur to the moment produced by the gripping force itself.

Technical data

Description		MPG 64	MPG 64-AS	MPG 64-IS
ID		0340014	0340044	0340064
Stroke per jaw	[mm]	10	10	10
Closing/opening force	[N]	200/190	270/-	-/245
Min. spring force	[N]		70	55
Weight	[kg]	0.6	0.7	0.7
Recommended workpiece weight	[kg]	1	1	1
Cylinder volume per double stroke	[cm ³]	12	21.5	19.5
Min./nom./max. operating pressure	[bar]	2/6/8	4/6/6.5	4/6/6.5
Closing/opening time	[s]	0.045/0.045	0.045/0.06	0.06/0.045
Closing/opening time with spring	[s]		0.30	0.30
Max. permissible finger length	[mm]	64	64	64
Max. permissible weight per finger	[kg]	0.24	0.24	0.24
IP protection class		30	30	30
Min./max. ambient temperature	[°C]	5/90	5/90	5/90
Repeat accuracy	[mm]	0.02	0.02	0.02
Cleanroom class ISO 14644-1		5	5	5

Main view



The drawing shows the basic version of the gripper with open jaws, without dimensional consideration of the options described below.

① As an alternative/in addition to spring-assisted mechanical gripping force maintenance, the SDV-P pressure maintenance valve can be used for I.D. and O.D. gripping (see "Accessories" section of catalog).

A, a Main / direct connection, gripper opening

B, b Main / direct connection, gripper closing

① Gripper connection

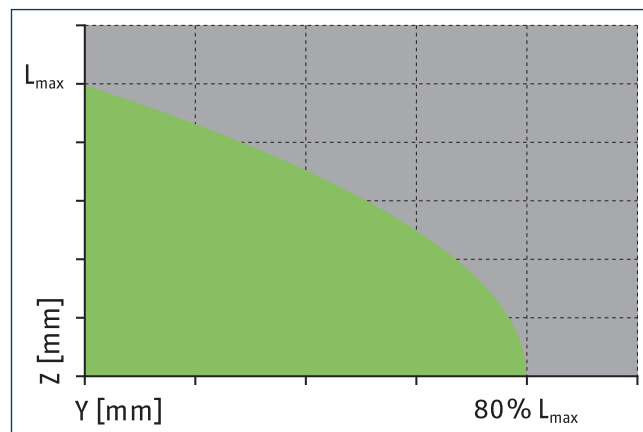
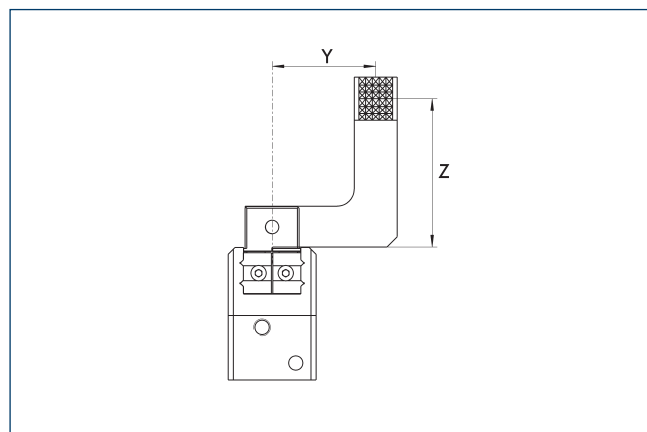
② Finger connection

72 Fit for centering sleeves

80 Depth of the centering sleeve hole in the counter part

90 Sensor IN ...

Maximum permitted finger projection

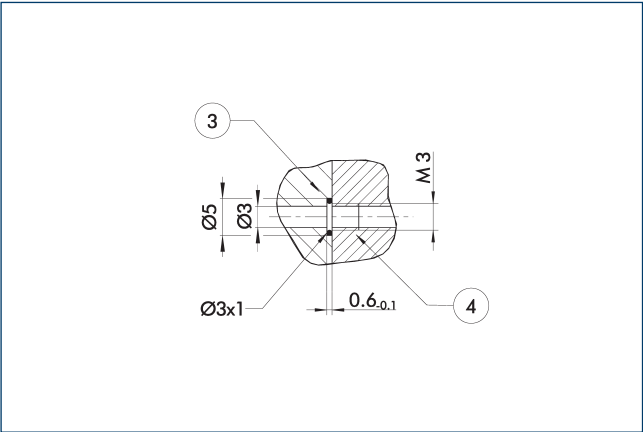


■ Permitted range

■ Inadmissible range

L_{max} is equivalent to the maximum permitted finger length, see the technical data table.

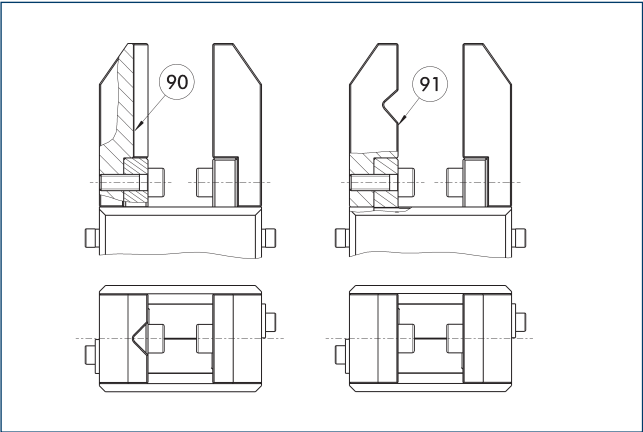
Hose-free direct connection M3



③ Adapter ④ Grippers

The direct connection is used for supplying compressed air without hoses. Instead, the pressure medium is fed through bore-holes in the mounting plate.

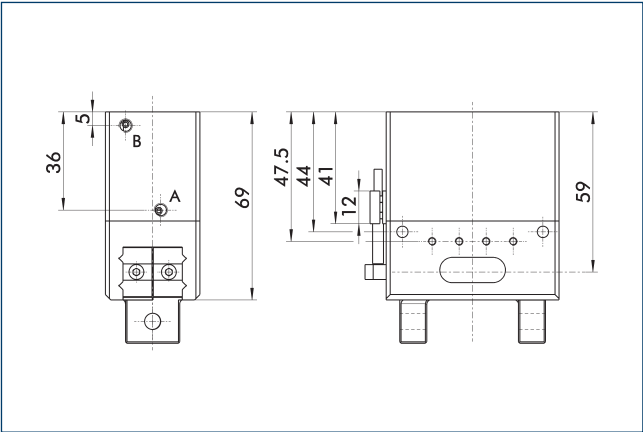
Jaw design



⑨⑩ Vertically positioned prism ⑨⑪ Horizontally positioned prism

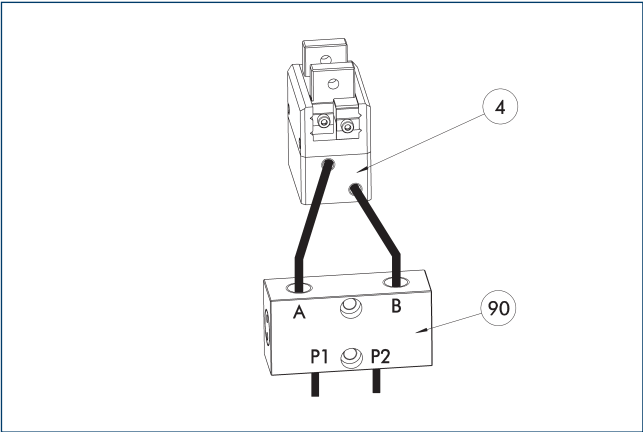
A workpiece, which is gripped using three points of contact, can be reliably gripped with high repeatability. A system with more than three points of contact is overdetermined. The drawing shows two alternative gripper finger designs for coaxial and radial gripping of a cylindrical part.

Gripping force maintenance version AS/IS



The mechanical gripping force maintenance device ensures that a minimum clamping force will be applied even if there is a drop in pressure. In the AS/S variant this acts as a closing force, in the IS variant as an opening force. Besides this, gripping force maintenance can be used to increase gripping force or for single actuated gripping.

SDV-P pressure maintenance valve



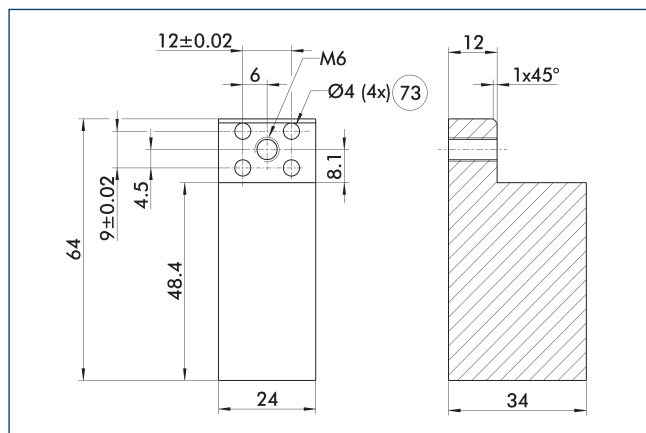
④ Grippers ⑨⑩ SDV-P pressure maintenance valve

The SDV-P pressure maintenance valve ensures in emergency STOP situations that the pressure in the piston chamber of pneumatic gripper, swivel, linear, and quick-change modules is temporarily maintained.

Description	ID	Recommended hose diameter
		[mm]
Pressure maintenance valve		
SDV-P 04	0403130	6
Pressure maintenance valve with air bleed screw		
SDV-P 04-E	0300120	6

① In order to achieve the specified closing and opening time for each gripper variant, the recommended hose diameter must be used. The direct allocation of the respective variant of the gripper for the respective SDV-P can be found at schunk.com.

Finger blanks ABR-MPG-plus 64

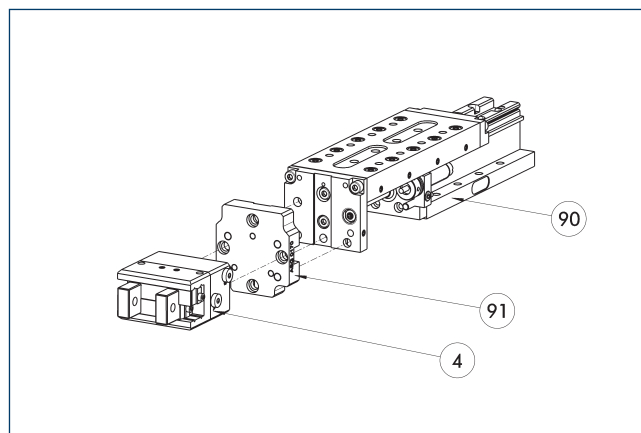


73 Fit for centering pins

The drawing shows the finger blank which can be reworked by the customer.

Description	ID	Material	Scope of delivery
Finger blank			
ABR-MPG-plus 64	0340215	Aluminum (3.4365)	2

Modular Assembly Automation



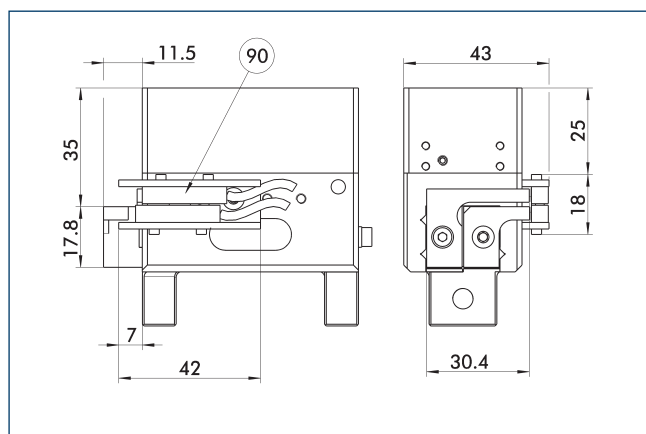
4 Grippers

90 Linear module CLM/KLM/LM/ELP/
ELM/ELS/HLM

91 ASG adapter plate

Grippers and linear modules can be combined with standard adapter plates from the modular assembly system. For more information see our main catalog "Modular Assembly Automation".

Attachment kit for proximity switch



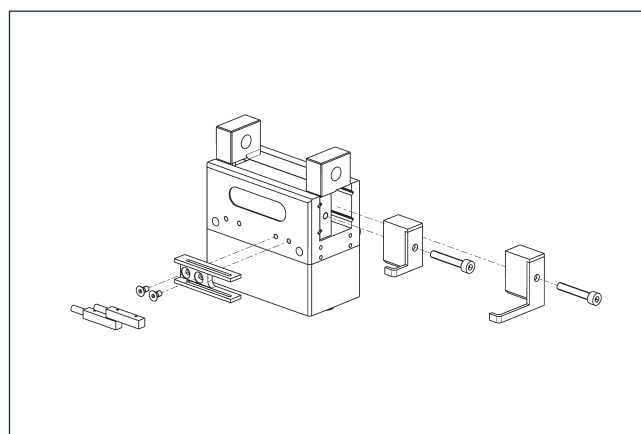
90 Sensor IN ...

End position monitoring can be mounted with an attachment kit.

Description	ID	
Attachment kit for proximity switch		
AS-IN5-MPG-plus 64	0340154	

① This attachment kit needs to be ordered optionally as an accessory.

Inductive proximity switches

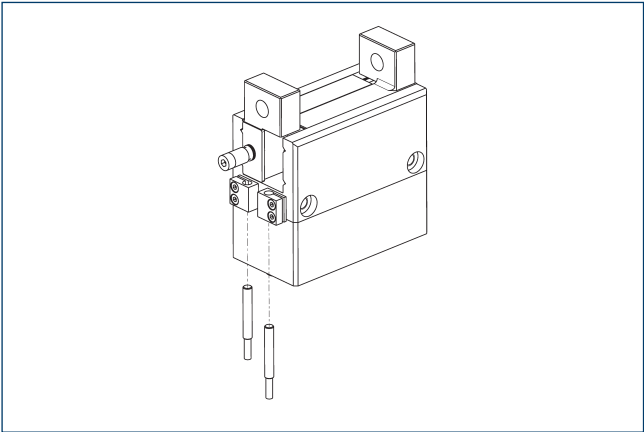


End position monitoring can be mounted with an attachment kit.

Description	ID	Often combined
Attachment kit for proximity switch		
AS-IN5-MPG-plus 64	0340154	
Inductive proximity switch		
IN 5-S-M12	0301569	
IN 5-S-M8	0301469	●
INK 5-S	0301501	●

① Two sensors (closer/S) are required for each unit and extension cables are available as an option. This attachment kit needs to be ordered optionally as an accessory. For sensor cables, note the minimum permissible bending radii. These are generally 35 mm.

Inductive proximity switches

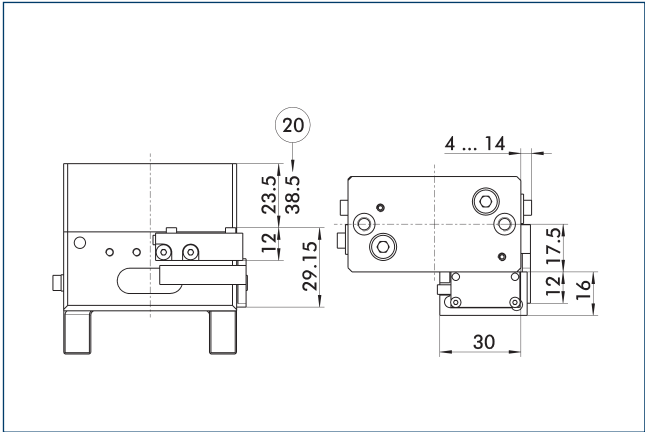


Directly mounted end position monitoring.

Description	ID	Often combined
Inductive proximity switch		
IN 40-S-M12	0301574	
IN 40-S-M8	0301474	●
INK 40-S	0301555	
Connection cables		
KA BG08-L 3P-0300-PNP	0301622	●
KA BG08-L 3P-0500-PNP	0301623	
KA BG12-L 3P-0500-PNP	30016369	
KA BW08-L 3P-0300-PNP	0301594	
KA BW08-L 3P-0500-PNP	0301502	
KA BW12-L 3P-0300-PNP	0301503	
KA BW12-L 3P-0500-PNP	0301507	
Clip for connector/socket		
CLI-M12	0301464	
CLI-M8	0301463	
Cable extension		
KV BG12-SG12 3P-0030-PNP	0301999	
KV BG12-SG12 3P-0060-PNP	0301998	
KV BW08-SG08 3P-0030-PNP	0301495	
KV BW08-SG08 3P-0100-PNP	0301496	
KV BW08-SG08 3P-0200-PNP	0301497	●
KV BW12-SG12 3P-0030-PNP	0301595	
KV BW12-SG12 3P-0100-PNP	0301596	
KV BW12-SG12 3P-0200-PNP	0301597	
Sensor distributor		
V2-M12	0301776	●
V2-M8	0301775	●
V4-M8	0301746	
V8-M8	0301751	

① Two sensors are required per unit for monitoring two positions. On option, extension cables and sensor distributors are available. Additional product variants of the sensor, and further information and technical data can be found in the catalog chapter sensor system.

Attachment kit for FPS



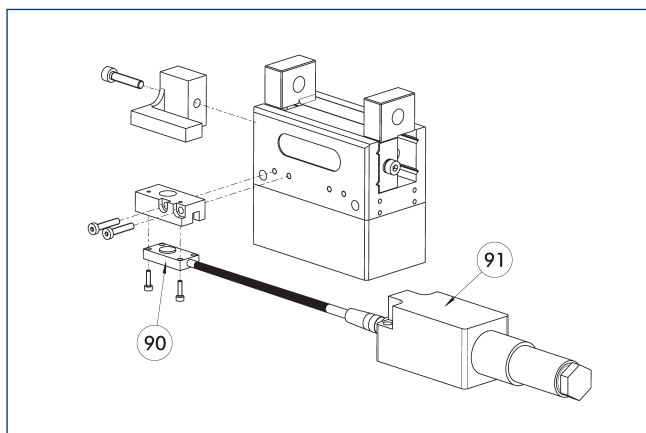
② For version AS/IS

The following FPS position sensor can differentiate between five programmable areas or switching points for the stroke of a gripper, and can be used in connection with a PC as a measuring system.

Description	ID	
Attachment kit for FPS		
AS-FPS-MPG 64	0301764	

① This attachment kit needs to be ordered optionally as an accessory.

Flexible position sensor



90 FPS-S sensor

91 FPS-F5 evaluation electronic

Flexible position monitoring of up to five positions.

Description	ID	Often combined
Attachment kit for FPS		
AS-FPS-MPG 64	0301764	
Sensor		
FPS-S 13	0301705	
Evaluation electronics		
FPS-F5	0301805	●
Cable extension		
KV BG08-SG08 3P-0050	0301598	
KV BG08-SG08 3P-0100	0301599	

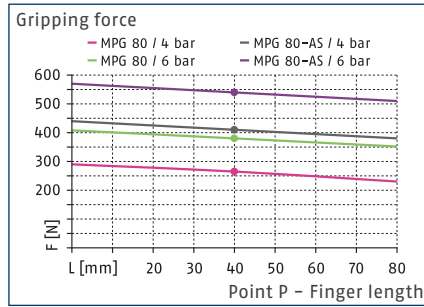
- ① When using an FPS system, an FPS sensor (FPS-S) as well as an electronic processor (FPS-F5 / F5 T) are required for each gripper as well as a mounting kit (AS), if listed. Cable extensions (KV) are optionally available – see catalog chapter “Accessories.”

MPG 80

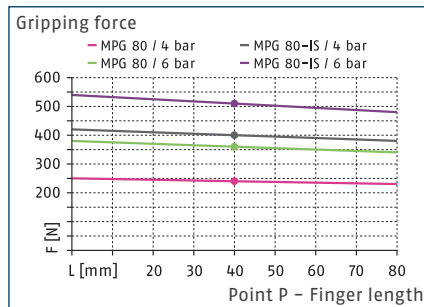
Gripper for small components



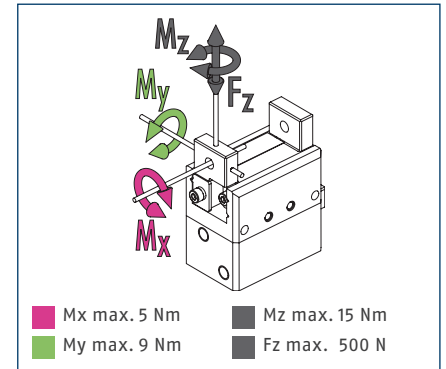
Gripping force O.D. gripping



Gripping force I.D. gripping



Max. loads



① The indicated moments and forces are static values, apply for each base jaw and may appear simultaneously. Loads may additionally occur to the moment produced by the gripping force itself.

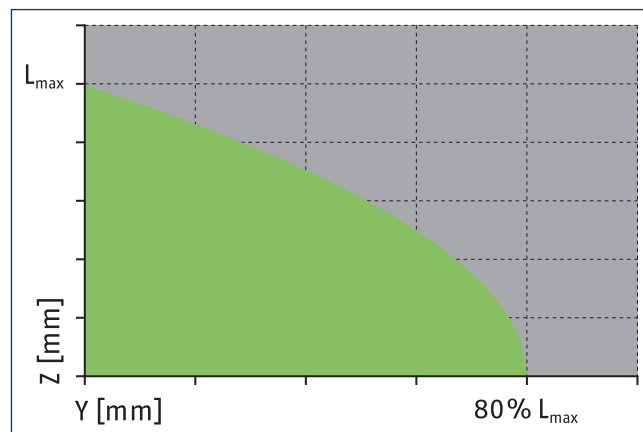
Technical data

Description		MPG 80	MPG 80-AS	MPG 80-IS
ID		0340015	0340045	0340065
Stroke per jaw	[mm]	14	14	14
Closing/opening force	[N]	380/360	540/-	-/510
Min. spring force	[N]		160	150
Weight	[kg]	1.2	1.35	1.35
Recommended workpiece weight	[kg]	1.9	1.9	1.9
Cylinder volume per double stroke	[cm ³]	29	45.5	40.5
Min./nom./max. operating pressure	[bar]	2/6/8	4/6/6.5	4/6/6.5
Closing/opening time	[s]	0.06/0.06	0.055/0.085	0.085/0.055
Closing/opening time with spring	[s]		0.30	0.30
Max. permissible finger length	[mm]	80	80	80
Max. permissible weight per finger	[kg]	0.4	0.4	0.4
IP protection class		30	30	30
Min./max. ambient temperature	[°C]	5/90	5/90	5/90
Repeat accuracy	[mm]	0.02	0.02	0.02
Cleanroom class ISO 14644-1		5	5	5

[illegible]

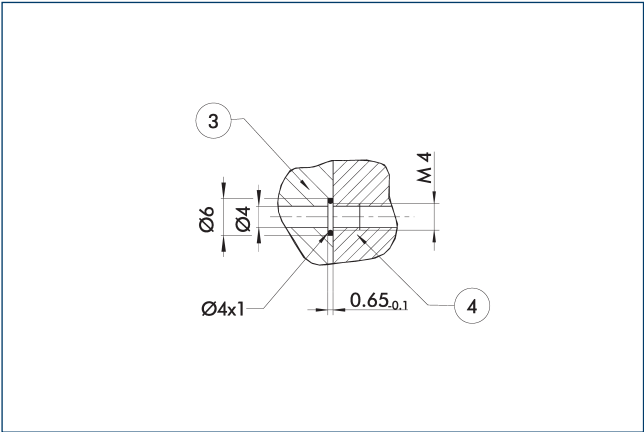
⑨0 Sensor IN ...

Technical drawing of a mechanical part, likely a bracket or support. The drawing shows a side view with a vertical section and a horizontal section. Dimension Y is indicated by a horizontal arrow pointing to the width of the horizontal section. Dimension Z is indicated by a vertical arrow pointing to the height of the vertical section. The part features a cross-hatched area on the horizontal section, suggesting a specific material or finish. The vertical section has a circular feature, possibly a hole or a mounting point.



L^{\max} is equivalent to the maximum permitted finger length, see the technical data table.

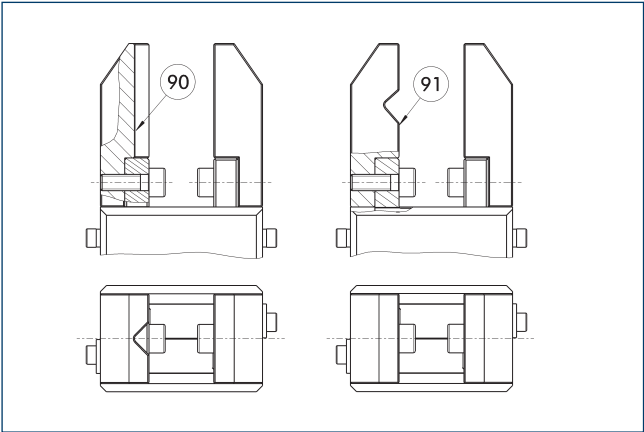
Hose-free direct connection M4



③ Adapter ④ Grippers

The direct connection is used for supplying compressed air without hoses. Instead, the pressure medium is fed through bore-holes in the mounting plate.

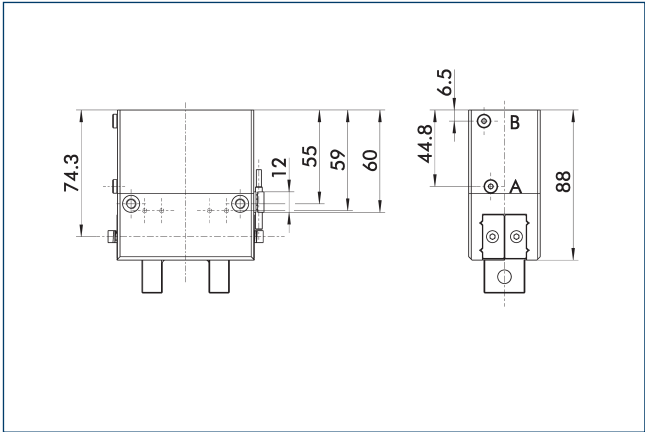
Jaw design



⑨⑩ Vertically positioned prism ⑨⑪ Horizontally positioned prism

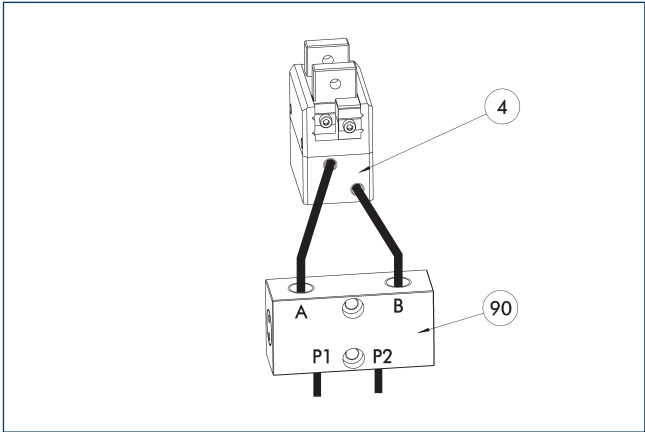
A workpiece, which is gripped using three points of contact, can be reliably gripped with high repeatability. A system with more than three points of contact is overdetermined. The drawing shows two alternative gripper finger designs for coaxial and radial gripping of a cylindrical part.

Gripping force maintenance version AS/IS



The mechanical gripping force maintenance device ensures that a minimum clamping force will be applied even if there is a drop in pressure. In the AS/S variant this acts as a closing force, in the IS variant as an opening force. Besides this, gripping force maintenance can be used to increase gripping force or for single actuated gripping.

SDV-P pressure maintenance valve



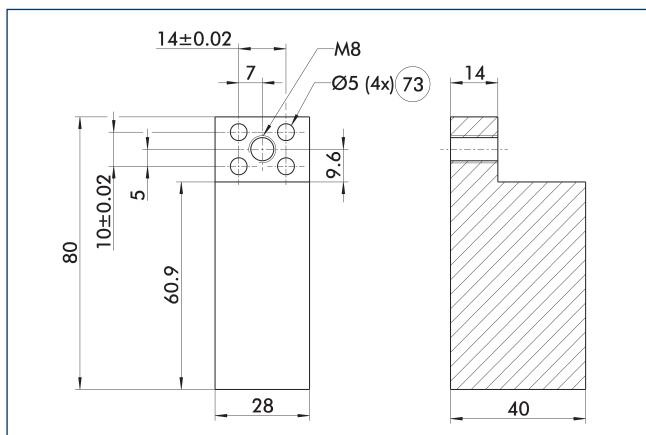
④ Grippers ⑨⑩ SDV-P pressure maintenance valve

The SDV-P pressure maintenance valve ensures in emergency STOP situations that the pressure in the piston chamber of pneumatic gripper, swivel, linear, and quick-change modules is temporarily maintained.

Description	ID	Recommended hose diameter
		[mm]
Pressure maintenance valve		
SDV-P 04	0403130	6
Pressure maintenance valve with air bleed screw		
SDV-P 04-E	0300120	6

① In order to achieve the specified closing and opening time for each gripper variant, the recommended hose diameter must be used. The direct allocation of the respective variant of the gripper for the respective SDV-P can be found at schunk.com.

Finger blanks ABR-MPG-plus 80

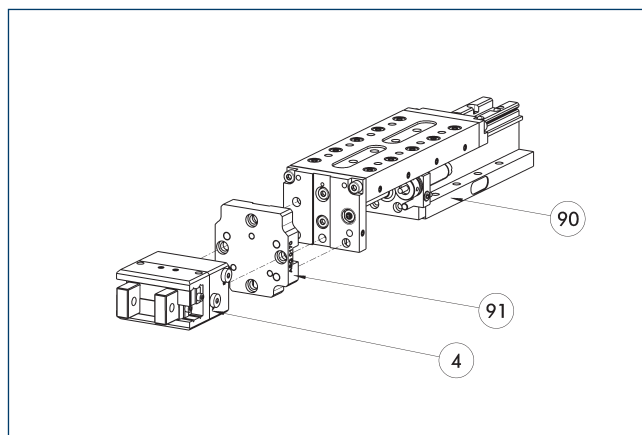


⑦③ Fit for centering pins

The drawing shows the finger blank which can be reworked by the customer.

Description	ID	Material	Scope of delivery
Finger blank			
ABR-MPG-plus 80	0340216	Aluminum (3.4365)	2

Modular Assembly Automation



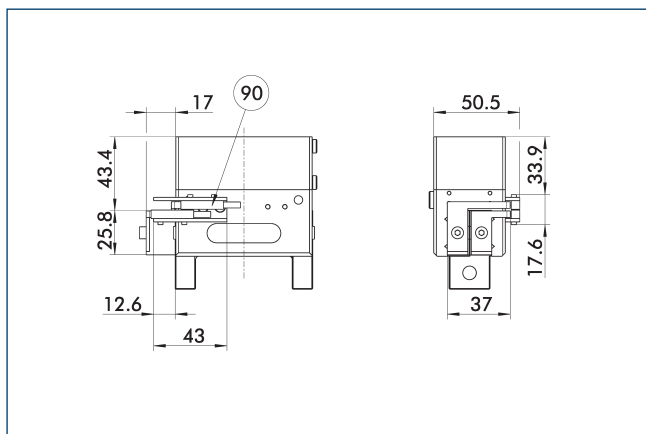
④ Grippers

⑨① Linear module CLM/KLM/LM/ELP/
ELM/ELS/HLM

⑨① ASG adapter plate

Grippers and linear modules can be combined with standard adapter plates from the modular assembly system. For more information see our main catalog "Modular Assembly Automation".

Attachment kit for proximity switch



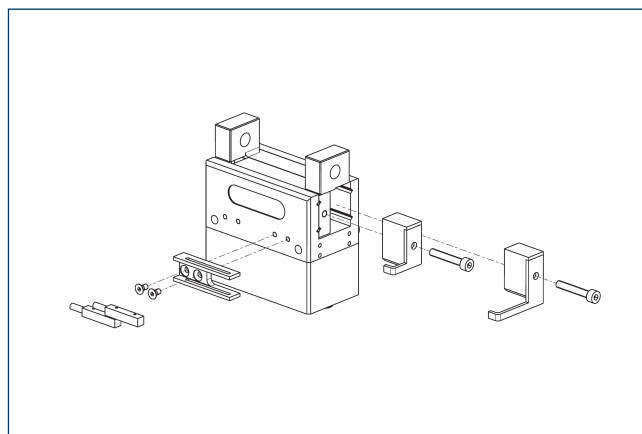
⑨① Sensor IN ...

End position monitoring can be mounted with an attachment kit.

Description	ID	
Attachment kit for proximity switch		
AS-MPG 80	0340155	

① This attachment kit needs to be ordered optionally as an accessory.

Inductive proximity switches

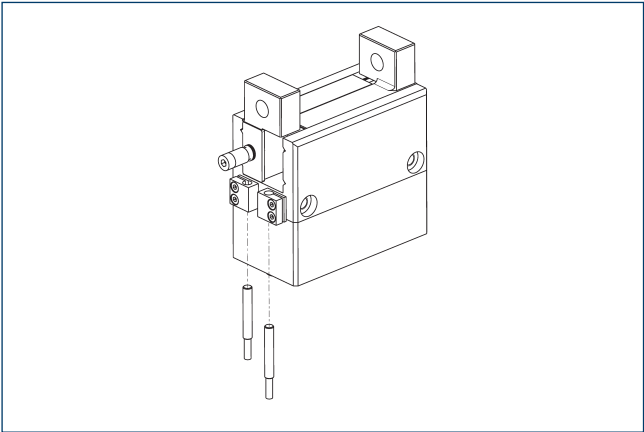


End position monitoring can be mounted with an attachment kit.

Description	ID	Often combined
Attachment kit for proximity switch		
AS-MPG 80	0340155	
Inductive proximity switch		
IN 5-S-M12	0301569	
IN 5-S-M8	0301469	●
INK 5-S	0301501	●

① Two sensors (closer/S) are required for each unit and extension cables are available as an option. This attachment kit needs to be ordered optionally as an accessory. For sensor cables, note the minimum permissible bending radii. These are generally 35 mm.

Inductive proximity switches

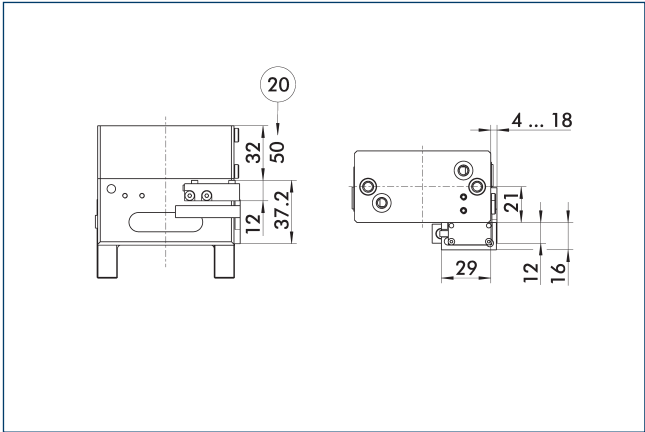


Directly mounted end position monitoring.

Description	ID	Often combined
Inductive proximity switch		
IN 40-S-M12	0301574	
IN 40-S-M8	0301474	●
INK 40-S	0301555	
Connection cables		
KA BG08-L 3P-0300-PNP	0301622	●
KA BG08-L 3P-0500-PNP	0301623	
KA BG12-L 3P-0500-PNP	30016369	
KA BW08-L 3P-0300-PNP	0301594	
KA BW08-L 3P-0500-PNP	0301502	
KA BW12-L 3P-0300-PNP	0301503	
KA BW12-L 3P-0500-PNP	0301507	
Clip for connector/socket		
CLI-M12	0301464	
CLI-M8	0301463	
Cable extension		
KV BG12-SG12 3P-0030-PNP	0301999	
KV BG12-SG12 3P-0060-PNP	0301998	
KV BW08-SG08 3P-0030-PNP	0301495	
KV BW08-SG08 3P-0100-PNP	0301496	
KV BW08-SG08 3P-0200-PNP	0301497	●
KV BW12-SG12 3P-0030-PNP	0301595	
KV BW12-SG12 3P-0100-PNP	0301596	
KV BW12-SG12 3P-0200-PNP	0301597	
Sensor distributor		
V2-M12	0301776	●
V2-M8	0301775	●
V4-M8	0301746	
V8-M8	0301751	

① Two sensors are required per unit for monitoring two positions. On option, extension cables and sensor distributors are available. Additional product variants of the sensor, and further information and technical data can be found in the catalog chapter sensor system.

Attachment kit for FPS



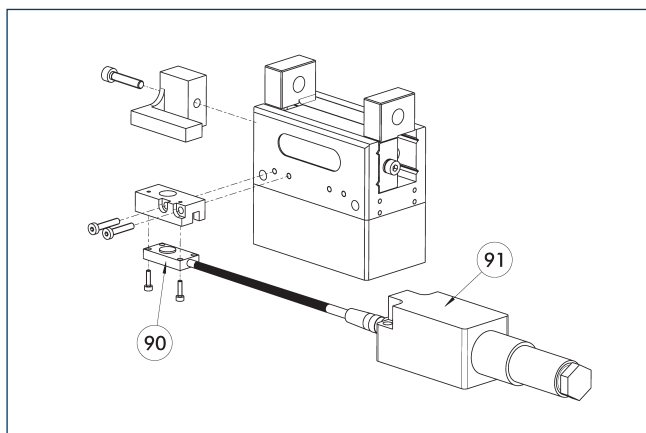
② For version AS/IS

The following FPS position sensor can differentiate between five programmable areas or switching points for the stroke of a gripper, and can be used in connection with a PC as a measuring system.

Description	ID	
Attachment kit for FPS		
AS-FPS-MPG 80	0301765	

① This attachment kit needs to be ordered optionally as an accessory.

Flexible position sensor



90 FPS-S sensor

91 FPS-F5 evaluation electronic

Flexible position monitoring of up to five positions.

Description	ID	Often combined
Attachment kit for FPS		
AS-FPS-MPG 80	0301765	
Sensor		
FPS-S 13	0301705	
Evaluation electronics		
FPS-F5	0301805	●
Cable extension		
KV BG08-SG08 3P-0050	0301598	
KV BG08-SG08 3P-0100	0301599	

- ① When using an FPS system, an FPS sensor (FPS-S) as well as an electronic processor (FPS-F5 / F5 T) are required for each gripper as well as a mounting kit (AS), if listed. Cable extensions (KV) are optionally available – see catalog chapter “Accessories.”



SCHUNK GmbH & Co. KG
Spann- und Greiftechnik

Bahnhofstr. 106 - 134
D-74348 Lauffen/Neckar
Tel. +49-7133-103-0
Fax +49-7133-103-2399
info@de.schunk.com
schunk.com

Folgen Sie uns | *Follow us*

