



Superior Clamping and Gripping



Product Information

Inductive Proximity Switches IN

Reliable. Non-contact. Easy assembly.

Inductive proximity switches IN

Inductive proximity switches are used to scan the current status of automation components. They are offered by SCHUNK in versions IN and INK. The version IN is directly pluggable or has a molded cable with plug connector. The INK version is suitable for direct wiring. It has a molded cable with an open end.

Field of application

Sensors are used for monitoring gripping and rotary modules, as well as linear modules, and robot accessories. Inductive SCHUNK sensors detect metals without contact, and are resistant to vibration, dust, and water. The sensors are suitable for connection to a digital input module.

Advantages – Your benefits

Mounting with brackets for easy and fast assembly

Version with LED display for control of the switching position directly at the sensor

Version with standard plug connector for fast and easy exchangeability of the extension cable

Very flexible cable in PUR version for a long service life

Proximity switches for flush mounting for minimal interfering contours in the application



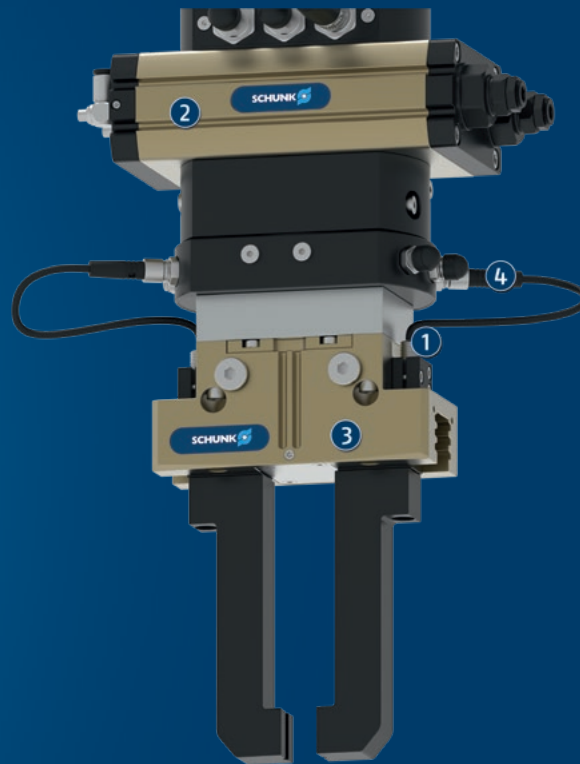
Options and special information

Functional description: With their oscillator coil, inductive proximity switches produce a high-frequency, alternating magnetic field. This field occurs on the active surface of the sensor. If a metal object enters the field, it draws energy from the magnetic field, thereby reducing the oscillation amplitude. This change is detected, and the sensor switches.

Signal output and switching type: Depending on the size and design of the sensors, they are available with the signal outputs opener and closer, and in the switching modes PNP and NPN. Please contact us for assistance.

High protection class: IP67 when plugged in, for use in clean or dusty environments or in case of contact with water. Operability in case of contact with other media (coolant, acids, bases, etc.) is often given, however cannot be guaranteed by SCHUNK.

Application example



Handling and rotary unit for components with sensor monitoring on the gripping module

- ① IN sensors
- ② Universal rotary actuator SRM
- ③ 2-finger parallel gripper PGN-plus-P
- ④ KST cable connector

SCHUNK offers more ...

The following components make the product even more productive – the suitable addition for the highest functionality, flexibility, reliability, and controlled production.



2-finger parallel gripper



Rotary unit



Sensor cables



Sensor distributor

① For more information on these products can be found on the following product pages or at schunk.com.

IN 30

Inductive Proximity Switches

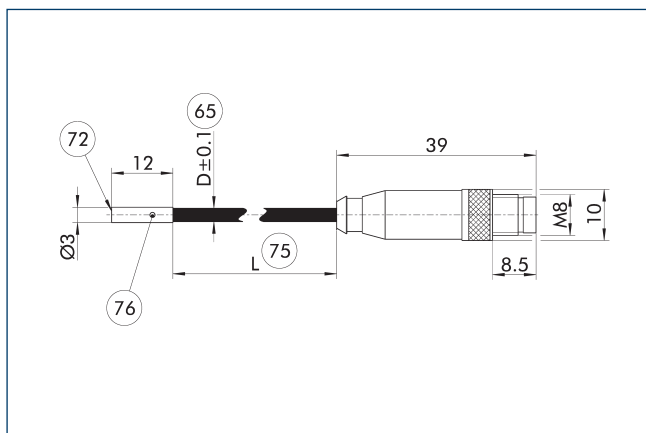


Technical data

Description		IN 30K-S-M8-PNP	IN 30L-S-M8-PNP
ID		1001272	1001274
Principle of function			
Measuring principle		inductive	inductive
Switching function		Closer	Closer
Type of switching		PNP	PNP
Number of switching points		1	1
Teach function		no	no
General data			
Switching distance	[mm]	0.9	1
Max. switching frequency	[Hz]	8000	3000
Min./max. ambient temperature	[°C]	-25/70	-25/70
LED display in sensor		yes	yes
Electrical operating data			
Type of voltage		DC	DC
Nominal voltage	[V]	24	24
Min./max. operating voltage	[V]	10/30	10/30
Voltage drop	[V]	2	2
Max. switching current	[A]	0.1	0.1
Short circuit protection		yes	yes
Protected against polarity reversal		yes	yes
Mechanical operating data			
Housing material		stainless steel	stainless steel
Cable connector/cable end		M8 connector, 3-pin	M8 connector, 3-pin
Cable length L	[cm]	20	20
Cable diameter D	[mm]	2.6	2.6
Cable design (wire cross section / number of wires)		3 x 0,055mm ²	3 x 0,055mm ²
Cable sheath material		PUR	PUR
Min. bending radius (dynamic)	[mm]	26	26
Min. bending radius (static)	[mm]	26	26
Weight	[kg]	0.08	0.08
Protection class IP (sensor, plugged)		67	67
Protection class		III	III
Drilling emulsion resistance *		no	no

* Tested cutting emulsions: r.rhenus TU 43P, Motorex Swisscool Magnum UX 550 and Oemeta 760 (1008339).

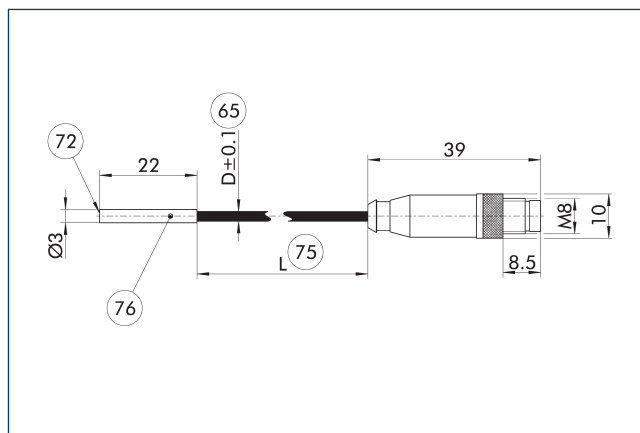
IN 30K main view



- 65 Cable diameter
- 72 Active sensor surface
- 75 Cable length
- 76 LED

The drawing shows the sensor with a connection cable and plug connector. For further information, for example on cable diameter and cable length, see the technical data table.

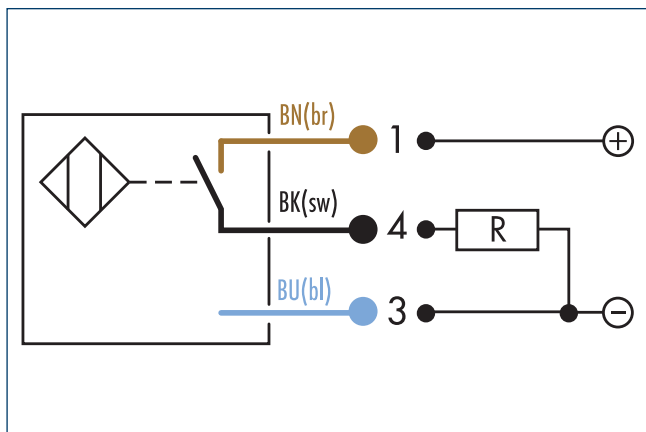
IN 30L main view



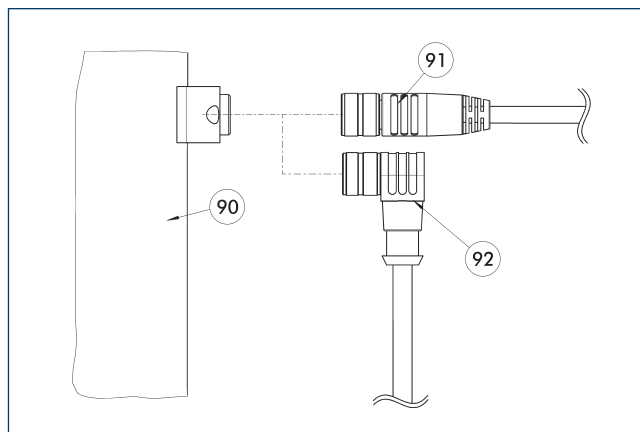
- 65 Cable diameter
- 72 Active sensor surface
- 75 Cable length
- 76 LED

The drawing shows the sensor with a connection cable and plug connector. For further information, for example on cable diameter and cable length, see the technical data table.

Wiring diagram closer PNP



Connection cables

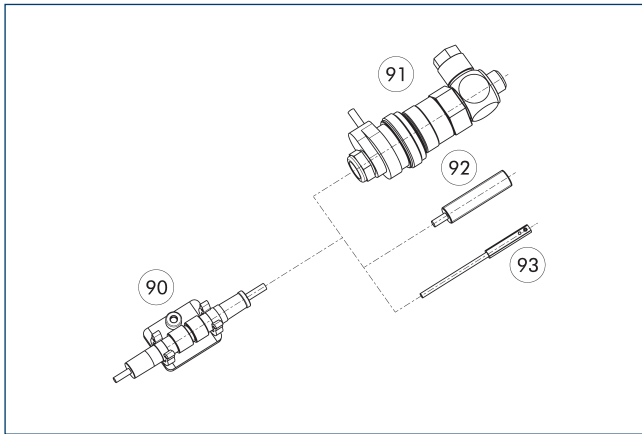


- 90 Electrical connection component
- 91 Cable with straight connector
- 92 Cable with angled connector

Description	ID	Length	Often combined
		[m]	
Connection cables			
KA BG08-L 3P-0300-PNP	0301622	3	●
KA BG08-L 3P-0500-PNP	0301623	5	
KA BW08-L 3P-0300-PNP	0301594	3	
KA BW08-L 3P-0500-PNP	0301502	5	
Cable extension			
KV BW08-SG08 3P-0030-PNP	0301495	0.3	
KV BW08-SG08 3P-0100-PNP	0301496	1	
KV BW08-SG08 3P-0200-PNP	0301497	2	●

① BG stands for a connection cable with a straight female connector and BW for an angled female connector. SG stands for a connection cable with a straight male connector and SW for an angled male connector.

clip for plug/socket



- ⑨⑩ CLI plug bracket
- ⑨① MV micro valve
- ⑨② IN proximity switch
- ⑨③ Magnetic switch MMS

The CLI clip is used for fastening and strain relief for the plug connectors. For example for the sensor and cable extension connection.

Description	ID	
clip for plug/socket		
CLI-M8	0301463	

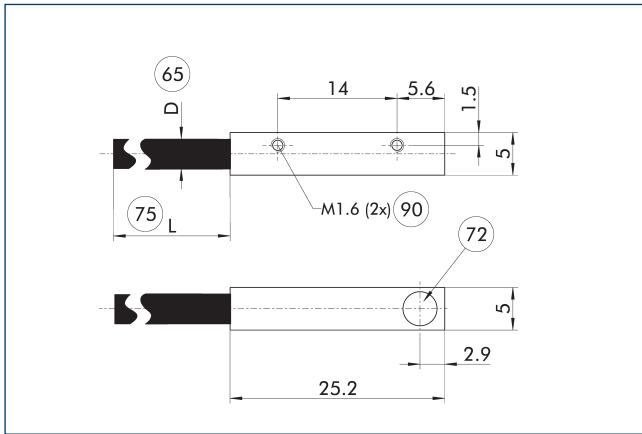


Technical data

Description		IN 5-S-M8	IN 5-S-M12	INK 5-S
ID		0301469	0301569	0301501
Principle of function				
Measuring principle		inductive	inductive	inductive
Switching function		Closer	Closer	Closer
Type of switching		PNP	PNP	PNP
Teach function		no	no	no
General data				
Switching distance	[mm]	1	1	1
Switching hysteresis from the nominal switching distance		< 15%	< 15%	< 15%
Max. switching frequency	[Hz]	3000	3000	3000
Min./max. ambient temperature	[°C]	-25/70	-25/70	-25/70
LED display in sensor		no	no	no
Electrical operating data				
Type of voltage		DC	DC	DC
Nominal voltage	[V]	24	24	24
Min./max. operating voltage	[V]	10/30	10/30	10/30
Voltage drop	[V]	1.5	1.5	1.5
Max. switching current	[A]	0.2	0.2	0.2
Short circuit protection		yes	yes	yes
Protected against polarity reversal		yes	yes	yes
Mechanical operating data				
Housing material		Brass, nickel-plated	Brass, nickel-plated	Brass, nickel-plated
Cable connector/cable end		M8	M12	open wire strands
Cable length L	[cm]	30	30	200
Cable diameter D	[mm]	3.5	3.5	3.5
Cable sheath material		PUR	PUR	PUR
Min. bending radius (dynamic)	[mm]	35	35	35
Min. bending radius (static)	[mm]	17.5	17.5	17.5
Weight	[kg]	0.014	0.021	0.057
Protection class IP (sensor, plugged)		67	67	67
Protection class		II	II	II
Drilling emulsion resistance *		no	no	no

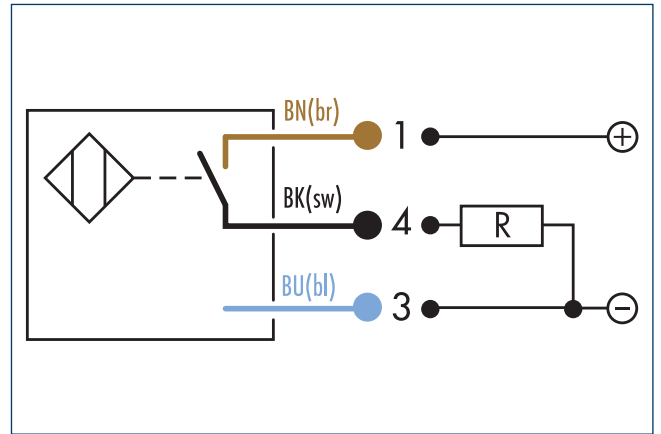
* Tested cutting emulsions: r.rhenus TU 43P, Motorex Swisscool Magnum UX 550 and Oemeta 760 (1008339).

IN 5 main view

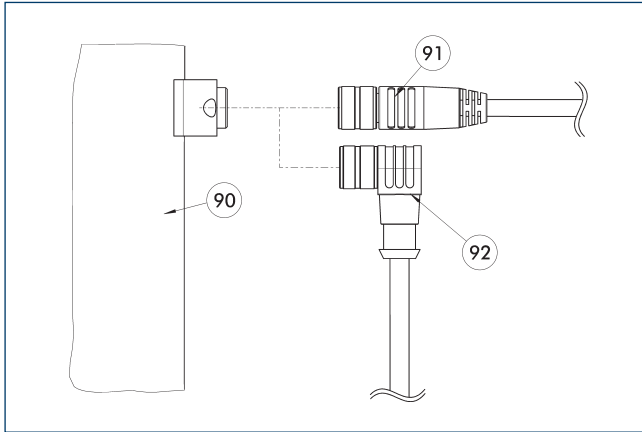


- ⑥5 Cable diameter
- ⑦5 Cable length
- ⑦2 Active sensor surface
- ⑨0 Mounting threads

Wiring diagram closer PNP



Connection cables



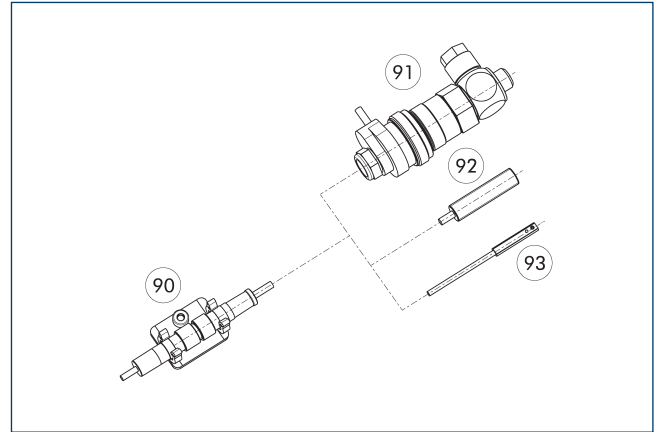
90 Electrical connection component

91 Cable with straight connector
92 Cable with angled connector

Description	ID	Length	Often combined
		[m]	
Connection cables			
KA BG08-L 3P-0300-PNP	0301622	3	●
KA BG08-L 3P-0500-PNP	0301623	5	
KA BG12-L 3P-0500-PNP	30016369	5	
KA BW08-L 3P-0300-PNP	0301594	3	
KA BW08-L 3P-0500-PNP	0301502	5	
KA BW12-L 3P-0300-PNP	0301503	3	
KA BW12-L 3P-0500-PNP	0301507	5	
Cable extension			
KV BG12-SG12 3P-0030-PNP	0301999	0.3	
KV BG12-SG12 3P-0060-PNP	0301998	0.6	
KV BW08-SG08 3P-0030-PNP	0301495	0.3	
KV BW08-SG08 3P-0100-PNP	0301496	1	
KV BW08-SG08 3P-0200-PNP	0301497	2	●
KV BW12-SG12 3P-0030-PNP	0301595	0.3	
KV BW12-SG12 3P-0100-PNP	0301596	1	
KV BW12-SG12 3P-0200-PNP	0301597	2	

① BG stands for a connection cable with a straight female connector and BW for an angled female connector. SG stands for a connection cable with a straight male connector and SW for an angled male connector.

clip for plug/socket



90 CLI plug bracket
91 MV micro valve

92 IN proximity switch
93 Magnetic switch MMS

The CLI clip is used for fastening and strain relief for the plug connectors. For example for the sensor and cable extension connection.

Description	ID	
clip for plug/socket		
CLI-M12	0301464	
CLI-M8	0301463	

IN 8

Inductive Proximity Switches

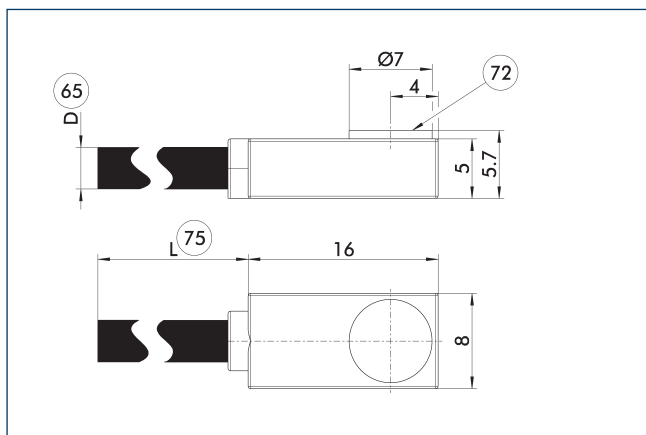


Technical data

Description		IN 8-S-M8	IN 8-S-M12	INK 8-SL	INK 8-S
ID		0301481	0301581	0302456	9700052
Principle of function					
Measuring principle		inductive	inductive	inductive	inductive
Switching function		Closer	Closer	Closer	Closer
Type of switching		PNP	PNP	PNP	PNP
Teach function		no	no	no	no
General data					
Switching distance	[mm]	1.5	1.5	1.5	1.5
Switching hysteresis from the nominal switching distance		< 10%	< 10%	< 10%	< 10%
Max. switching frequency	[Hz]	1000	1000	1000	1000
Min./max. ambient temperature	[°C]	-25/70	-25/70	-25/70	-25/70
LED display in sensor		no	no	no	no
Electrical operating data					
Type of voltage		DC	DC	DC	DC
Nominal voltage	[V]	24	24	24	24
Min./max. operating voltage	[V]	10/36	10/36	10/36	10/36
Voltage drop	[V]	1.5	1.5	1.5	1.5
Max. switching current	[A]	0.2	0.2	0.2	0.2
Short circuit protection		yes	yes	yes	yes
Protected against polarity reversal		yes	yes	yes	yes
Mechanical operating data					
Housing material		PA 6, black	PA 6, black	PA 6, black	PA 6, black
Cable connector/cable end		M8	M12	open wire strands	open wire strands
Cable length L	[cm]	30	30	200	200
Cable diameter D	[mm]	3.5	3.5	3.5	3.5
Cable sheath material		PUR	PUR	PUR	PUR
Min. bending radius (dynamic)	[mm]	35	35	35	35
Min. bending radius (static)	[mm]	17.5	17.5	17.5	17.5
Weight	[kg]	0.012	0.019	0.03	0.1
Protection class IP (sensor, plugged)		67	67	67	67
Protection class		II	II	II	II
Drilling emulsion resistance *		no	no	no	no

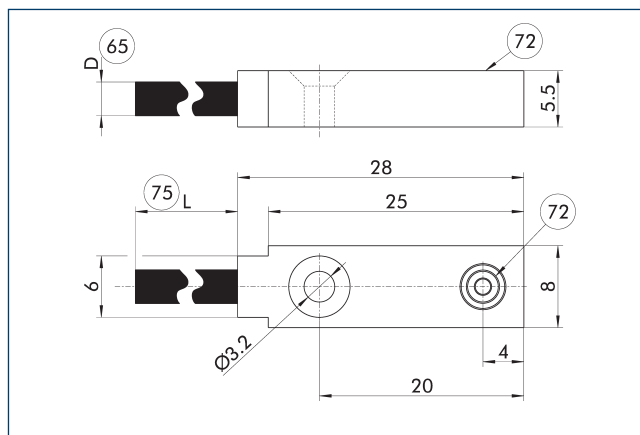
* Tested cutting emulsions: r.rhenus TU 43P, Motorex Swisscool Magnum UX 550 and Oemeta 760 (1008339).

IN 8 / INK 8-S main view



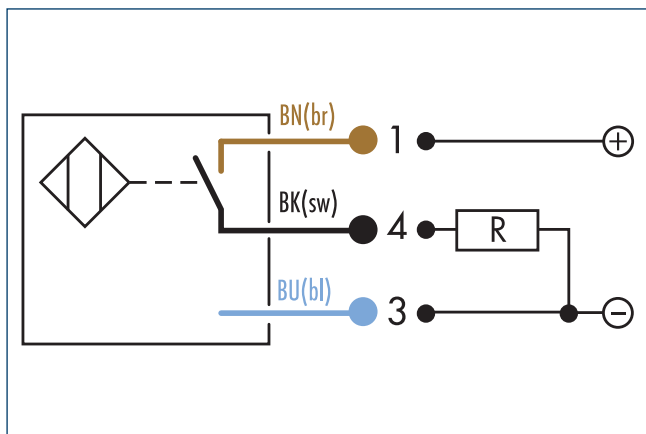
65 Cable diameter
72 Active sensor surface
75 Cable length

INK 8-SL main view

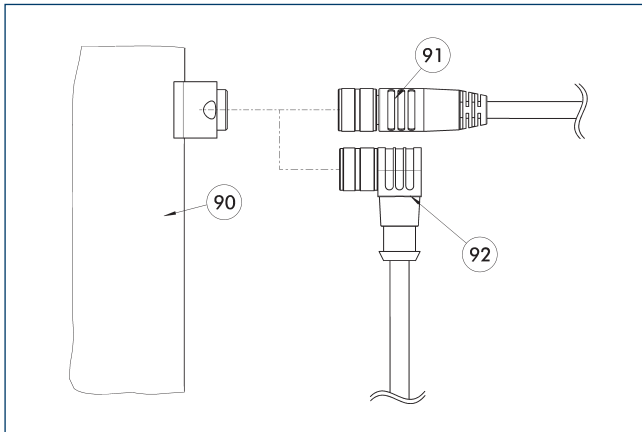


65 Cable diameter
72 Active sensor surface
75 Cable length

Wiring diagram closer PNP



Connection cables



⑨⑩ Electrical connection component

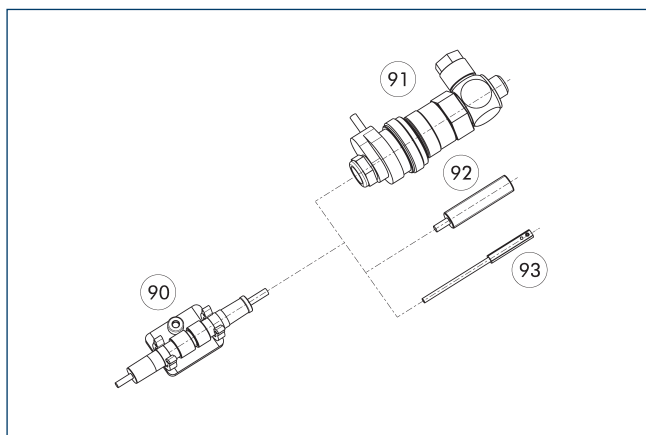
⑨① Cable with straight connector

⑨② Cable with angled connector

Description	ID	Length	Often combined
		[m]	
Connection cables			
KA BG08-L 3P-0300-PNP	0301622	3	●
KA BG08-L 3P-0500-PNP	0301623	5	
KA BG12-L 3P-0500-PNP	30016369	5	
KA BW08-L 3P-0300-PNP	0301594	3	
KA BW08-L 3P-0500-PNP	0301502	5	
KA BW12-L 3P-0300-PNP	0301503	3	
KA BW12-L 3P-0500-PNP	0301507	5	
Cable extension			
KV BG12-SG12 3P-0030-PNP	0301999	0.3	
KV BG12-SG12 3P-0060-PNP	0301998	0.6	
KV BW08-SG08 3P-0030-PNP	0301495	0.3	
KV BW08-SG08 3P-0100-PNP	0301496	1	
KV BW08-SG08 3P-0200-PNP	0301497	2	●
KV BW12-SG12 3P-0030-PNP	0301595	0.3	
KV BW12-SG12 3P-0100-PNP	0301596	1	
KV BW12-SG12 3P-0200-PNP	0301597	2	

① BG stands for a connection cable with a straight female connector and BW for an angled female connector. SG stands for a connection cable with a straight male connector and SW for an angled male connector.

clip for plug/socket



- 90 CLI plug bracket 92 IN proximity switch
 91 MV micro valve 93 Magnetic switch MMS

The CLI clip is used for fastening and strain relief for the plug connectors. For example for the sensor and cable extension connection.

Description	ID	
clip for plug/socket		
CLI-M12	0301464	
CLI-M8	0301463	

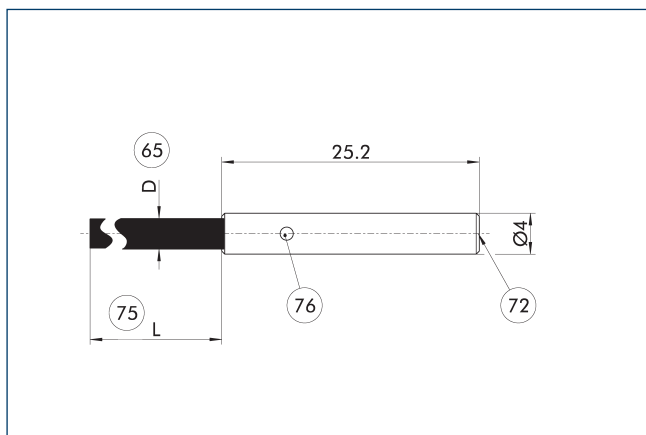


Technical data

Description		IN 40-S-M8	IN 40-S-M12	INK 40-S	IN 40-O-M8	IN 40-O-M12	INK 40-O
ID		0301474	0301574	0301555	0301484	0301584	0301556
Principle of function							
Measuring principle		inductive	inductive	inductive	inductive	inductive	inductive
Switching function		Closer	Closer	Closer	Opener	Opener	Opener
Type of switching		PNP	PNP	PNP	PNP	PNP	PNP
Number of switching points		1	1	1	1	1	1
Teach function		no	no	no	no	no	no
General data							
Switching distance	[mm]	0.8	0.8	0.8	0.8	0.8	0.8
Switching hysteresis from the nominal switching distance		< 5%	< 5%	< 5%	< 5%	< 5%	< 5%
Max. switching frequency	[Hz]	3000	3000	3000	3000	3000	3000
Min./max. ambient temperature	[°C]	-25/70	-25/70	-25/70	-25/70	-25/70	-25/70
LED display in sensor		yes	yes	yes	yes	yes	yes
Electrical operating data							
Type of voltage		DC	DC	DC	DC	DC	DC
Nominal voltage	[V]	24	24	24	24	24	24
Min./max. operating voltage	[V]	10/30	10/30	10/30	10/30	10/30	10/30
Voltage drop	[V]	1.8	0.6	0.6	0.6	0.6	0.6
Max. switching current	[A]	0.1	0.2	0.2	0.2	0.2	0.2
Short circuit protection		yes	yes	yes	yes	yes	yes
Protected against polarity reversal		yes	yes	yes	yes	yes	yes
Mechanical operating data							
Housing material		stainless steel	stainless steel	stainless steel	stainless steel	stainless steel	stainless steel
Cable connector/cable end		M8 connector, 3-pin	M12 connector, 3-pin	open wire strands	M8 connector, 3-pin	M12 connector, 3-pin	open wire strands
Cable length L	[cm]	30	30	200	30	30	200
Cable diameter D	[mm]	3	3.3	3.3	3.3	3.3	3.3
Cable design (wire cross section / number of wires)		3x 0.14mm ²	3x 0.14mm ²	3x 0.14mm ²	3x 0.14mm ²	3x 0.14mm ²	3x 0.14mm ²
Cable sheath material		PUR	PUR	PUR	PUR	PUR	PUR
Min. bending radius (dynamic)	[mm]	32	34	34	34	34	34
Min. bending radius (static)	[mm]	16	17	17	17	17	17
Weight	[kg]	0.012	0.02	0.062	0.013	0.02	0.05
Protection class IP (sensor, plugged)		67	67	67	67	67	67
Protection class		III					
Drilling emulsion resistance *		yes	yes	no	yes	yes	no
Options and their characteristics							
Version with lateral cable outlet		IN 40-S-M8-SA	IN 40-S-M12-SA	INK 40-S-SA			
ID		0301473	0301577	0301565			
LED display in sensor		yes	yes	yes			

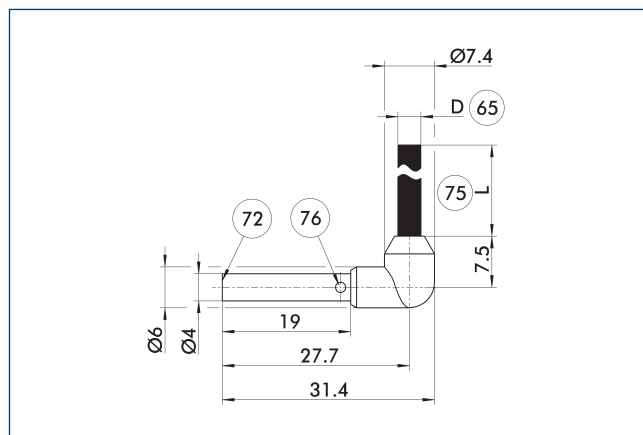
* Tested cutting emulsions: r.rhenus TU 43P, Motorex Swisscool Magnum UX 550 and Oemeta 760 (1008339).

IN(K) 40 main view



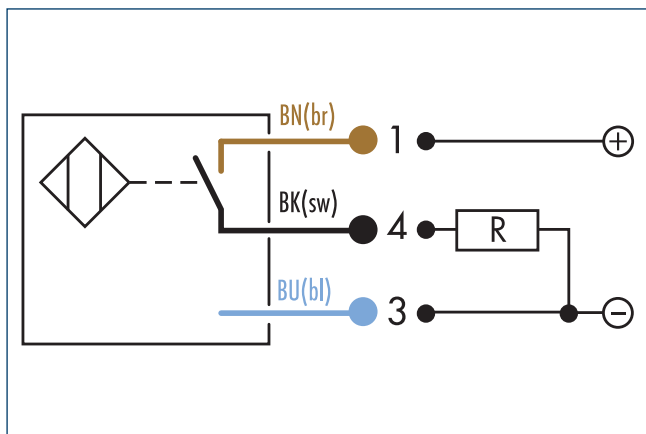
- 65 Cable diameter
- 72 Active sensor surface
- 75 Cable length
- 76 LED

IN(K) 40-SA main view

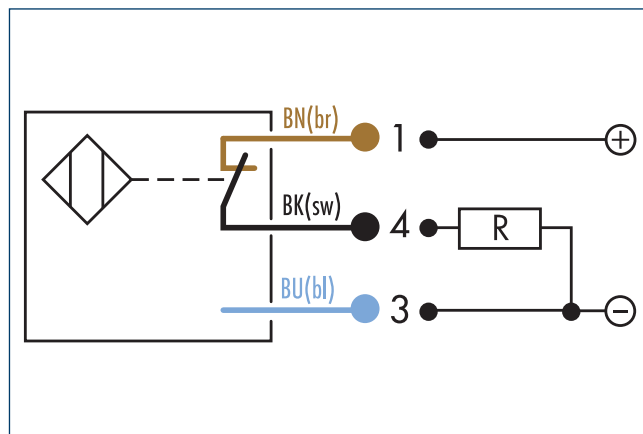


- 72 Active sensor surface
- 76 LED
- 65 Cable diameter
- 75 Cable length

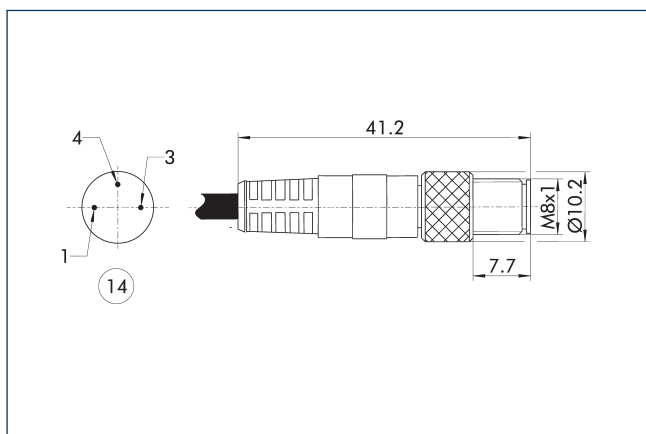
Wiring diagram closer PNP



Wiring diagram opener PNP



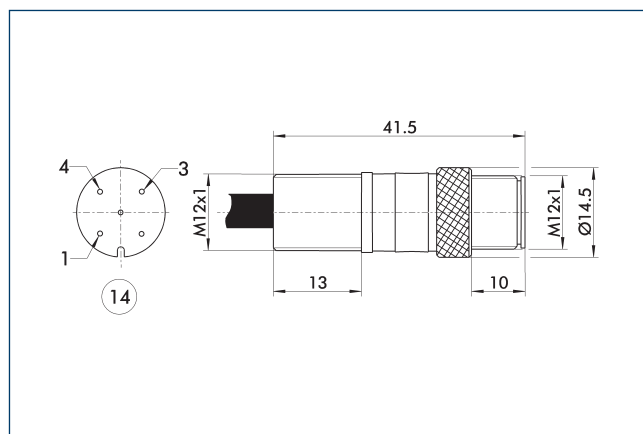
View of M8 connector (3-pin)



- 14 Connector

This view shows the plug connector on the cable end of the sensor.

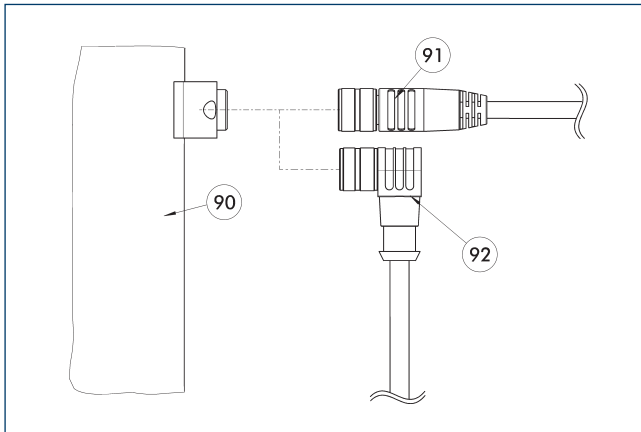
View of M12 connector (4-pin)



- 14 Connector

This view shows the plug connector on the cable end of the sensor.

Connection cables



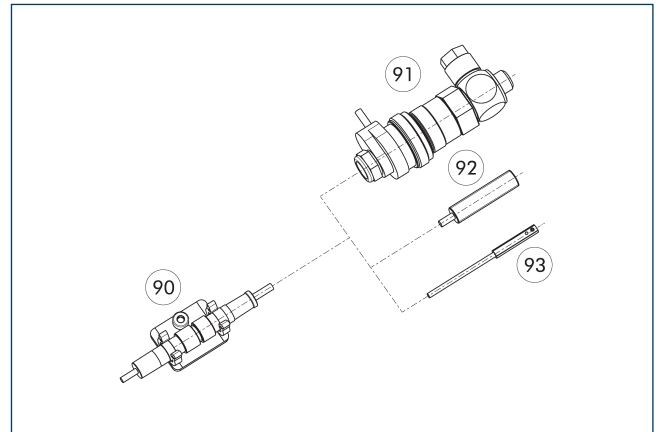
90 Electrical connection component

91 Cable with straight connector
92 Cable with angled connector

Description	ID	Length	Often combined
		[m]	
Connection cables			
KA BG08-L 3P-0300-PNP	0301622	3	●
KA BG08-L 3P-0500-PNP	0301623	5	
KA BG12-L 3P-0500-PNP	30016369	5	
KA BW08-L 3P-0300-PNP	0301594	3	
KA BW08-L 3P-0500-PNP	0301502	5	
KA BW12-L 3P-0300-PNP	0301503	3	
KA BW12-L 3P-0500-PNP	0301507	5	
Cable extension			
KV BG12-SG12 3P-0030-PNP	0301999	0.3	
KV BG12-SG12 3P-0060-PNP	0301998	0.6	
KV BW08-SG08 3P-0030-PNP	0301495	0.3	
KV BW08-SG08 3P-0100-PNP	0301496	1	
KV BW08-SG08 3P-0200-PNP	0301497	2	●
KV BW12-SG12 3P-0030-PNP	0301595	0.3	
KV BW12-SG12 3P-0100-PNP	0301596	1	
KV BW12-SG12 3P-0200-PNP	0301597	2	

① BG stands for a connection cable with a straight female connector and BW for an angled female connector. SG stands for a connection cable with a straight male connector and SW for an angled male connector.

clip for plug/socket



90 CLI plug bracket
91 MV micro valve

92 IN proximity switch
93 Magnetic switch MMS

The CLI clip is used for fastening and strain relief for the plug connectors. For example for the sensor and cable extension connection.

Description	ID	
clip for plug/socket		
CLI-M12	0301464	
CLI-M8	0301463	

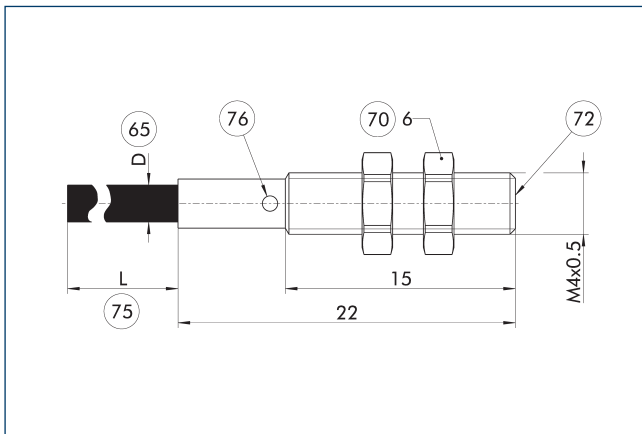


Technical data

Description		IN 41-S-M8-PNP
ID		1325755
Principle of function		
Measuring principle		inductive
Switching function		Closer
Type of switching		PNP
Number of switching points		1
Teach function		no
General data		
Switching distance	[mm]	0.8
Switching hysteresis from the nominal switching distance		< 15%
Max. switching frequency	[Hz]	3000
Min./max. ambient temperature	[°C]	-25/70
LED display in sensor		yes
Electrical operating data		
Type of voltage		DC
Nominal voltage	[V]	24
Min./max. operating voltage	[V]	10/30
Voltage drop	[V]	2
Max. switching current	[A]	0.1
Short circuit protection		yes
Protected against polarity reversal		yes
Mechanical operating data		
Housing material		stainless steel
Cable connector/cable end		M8 connector, 3-pin
Cable length L	[cm]	20
Cable diameter D	[mm]	2.4
Cable design (wire cross section / number of wires)		3x 0.14mm ²
Cable sheath material		PUR
Min. bending radius (dynamic)	[mm]	24
Min. bending radius (static)	[mm]	24
Weight	[kg]	0.007
Protection class IP (sensor, plugged)		67
Protection class		III
Drilling emulsion resistance *		no

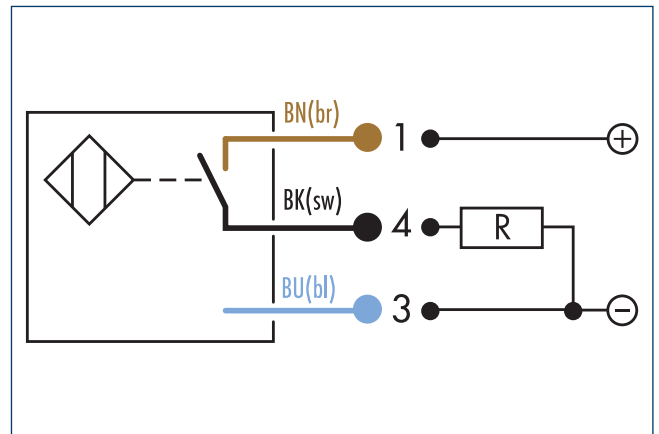
* Tested cutting emulsions: r.rhenus TU 43P, Motorex Swisscool Magnum UX 550 and Oemeta 760 (1008339).

Main view

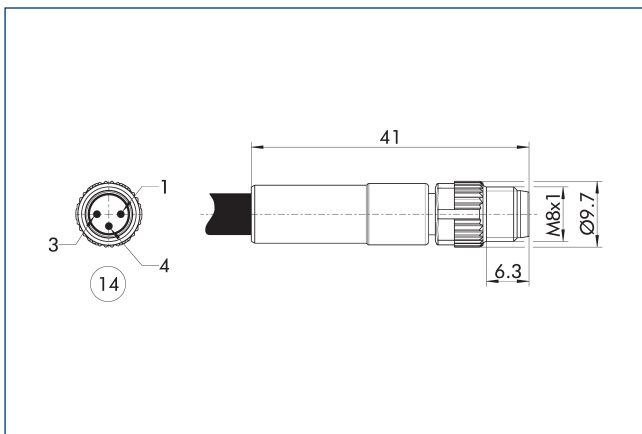


- 65 Cable diameter
- 70 Wrench size
- 72 Active sensor surface
- 75 Cable length
- 76 LED

Wiring diagram closer PNP

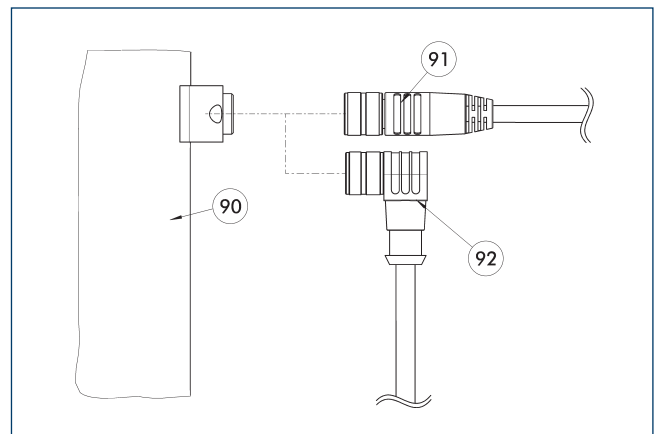


View of M8 connector (3-pin)



- 14 Connector

Connection cables

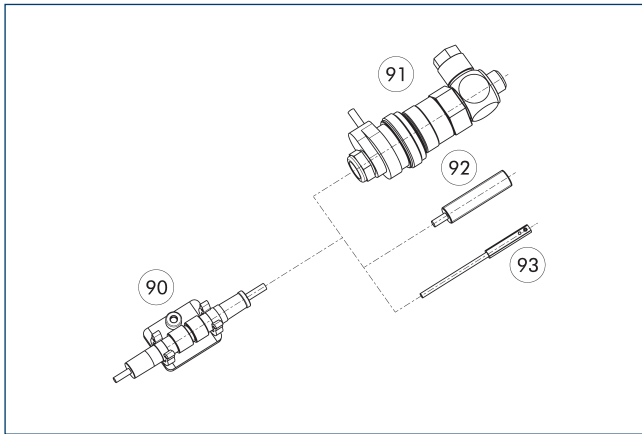


- 90 Electrical connection component
- 91 Cable with straight connector
- 92 Cable with angled connector

Description	ID	Length [m]	Often combined
Connection cables			
KA BG08-L 3P-0300-PNP	0301622	3	•
KA BG08-L 3P-0500-PNP	0301623	5	
KA BW08-L 3P-0300-PNP	0301594	3	
KA BW08-L 3P-0500-PNP	0301502	5	

- ① BG stands for a connection cable with a straight female connector and BW for an angled female connector. SG stands for a connection cable with a straight male connector and SW for an angled male connector.

clip for plug/socket



- 90 CLI plug bracket
- 91 MV micro valve
- 92 IN proximity switch
- 93 Magnetic switch MMS

The CLI clip is used for fastening and strain relief for the plug connectors. For example for the sensor and cable extension connection.

Description	ID	
clip for plug/socket		
CLI-M8	0301463	

IN 50

Inductive Proximity Switches

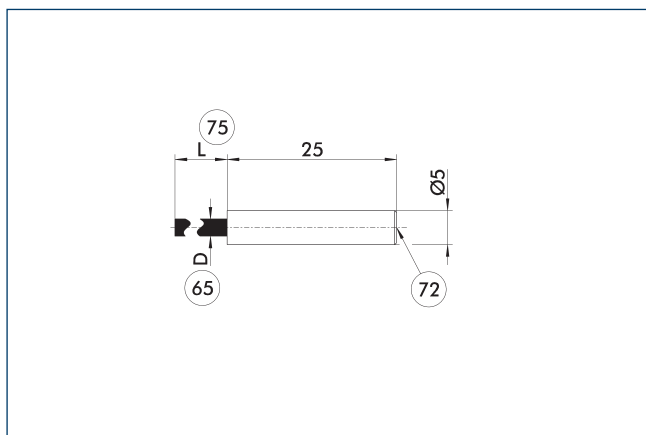


Technical data

Description		IN 50-S-M8	IN 50-S-M12	INK 50-S
ID		0301568	0301575	0301560
Principle of function				
Measuring principle		inductive	inductive	inductive
Switching function		Closer	Closer	Closer
Type of switching		PNP	PNP	PNP
Teach function		no	no	no
General data				
Switching distance	[mm]	1	1	1
Switching hysteresis from the nominal switching distance		< 5%	< 5%	< 5%
Max. switching frequency	[Hz]	3000	3000	3000
Min./max. ambient temperature	[°C]	-25/70	-25/70	-25/70
LED display in sensor		yes	yes	no
Electrical operating data				
Type of voltage		DC	DC	DC
Nominal voltage	[V]	24	24	24
Min./max. operating voltage	[V]	10/30	10/30	10/30
Voltage drop	[V]	0.6	0.6	0.6
Max. switching current	[A]	0.2	0.2	0.2
Short circuit protection		yes	yes	yes
Protected against polarity reversal		yes	yes	yes
Mechanical operating data				
Housing material		Brass, nickel-plated	Brass, nickel-plated	Brass, nickel-plated
Cable connector/cable end		M8	M12	open wire strands
Cable length L	[cm]	30	30	200
Cable diameter D	[mm]	3.5	3.5	3.5
Cable sheath material		PUR	PUR	PUR
Min. bending radius (dynamic)	[mm]	35	35	35
Min. bending radius (static)	[mm]	17.5	17.5	17.5
Weight	[kg]	0.014	0.021	0.1
Protection class IP (sensor, plugged)		67	67	67
Protection class		II	II	II
Drilling emulsion resistance *		no	no	no

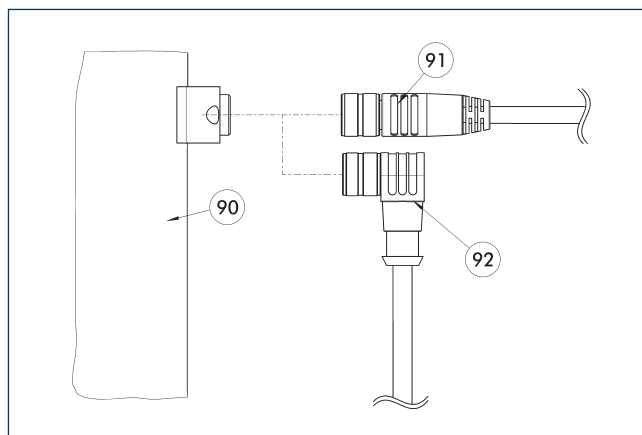
* Tested cutting emulsions: r.rhenus TU 43P, Motorex Swisscool Magnum UX 550 and Oemeta 760 (1008339).

IN 50 main view



- 65 Cable diameter
- 72 Active sensor surface
- 75 Cable length

Connection cables



- 90 Electrical connection component
- 91 Cable with straight connector
- 92 Cable with angled connector

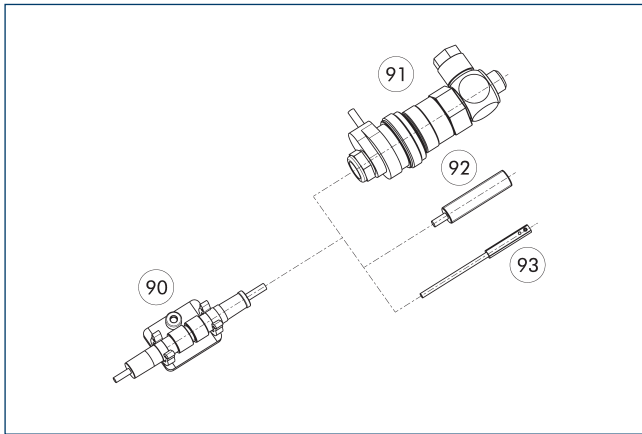
Description	ID	Length	Often combined
		[m]	
Connection cables			
KA BG08-L 3P-0300-PNP	0301622	3	●
KA BG08-L 3P-0500-PNP	0301623	5	
KA BG12-L 3P-0500-PNP	30016369	5	
KA BW08-L 3P-0300-PNP	0301594	3	
KA BW08-L 3P-0500-PNP	0301502	5	
KA BW12-L 3P-0300-PNP	0301503	3	
KA BW12-L 3P-0500-PNP	0301507	5	
Cable extension			
KV BG12-SG12 3P-0030-PNP	0301999	0.3	
KV BG12-SG12 3P-0060-PNP	0301998	0.6	
KV BW08-SG08 3P-0030-PNP	0301495	0.3	
KV BW08-SG08 3P-0100-PNP	0301496	1	
KV BW08-SG08 3P-0200-PNP	0301497	2	●
KV BW12-SG12 3P-0030-PNP	0301595	0.3	
KV BW12-SG12 3P-0100-PNP	0301596	1	
KV BW12-SG12 3P-0200-PNP	0301597	2	

① BG stands for a connection cable with a straight female connector and BW for an angled female connector. SG stands for a connection cable with a straight male connector and SW for an angled male connector.

IN 50

Inductive Proximity Switches

clip for plug/socket



- 90 CLI plug bracket
- 91 MV micro valve
- 92 IN proximity switch
- 93 Magnetic switch MMS

The CLI clip is used for fastening and strain relief for the plug connectors. For example for the sensor and cable extension connection.

Description	ID	
clip for plug/socket		
CLI-M12	0301464	
CLI-M8	0301463	

IN 60

Inductive Proximity Switches

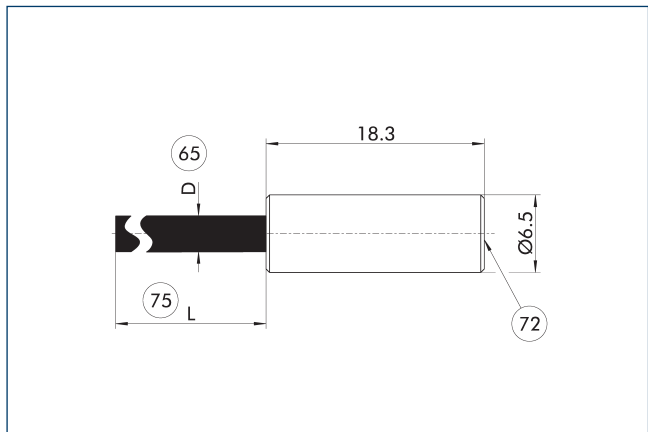


Technical data

Description		IN 60-S-M8	IN 60-S-M12	INK 60-S
ID		0301485	0301585	0301553
Principle of function				
Measuring principle		inductive	inductive	inductive
Switching function		Closer	Closer	Closer
Type of switching		PNP	PNP	PNP
Teach function		no	no	no
General data				
Switching distance	[mm]	1.5	1.5	1.5
Switching hysteresis from the nominal switching distance		< 10%	< 10%	< 10%
Max. switching frequency	[Hz]	1000	1000	1000
Min./max. ambient temperature	[°C]	-25/70	-25/70	-25/70
LED display in sensor		no	no	no
Electrical operating data				
Type of voltage		DC	DC	DC
Nominal voltage	[V]	24	24	24
Min./max. operating voltage	[V]	10/30	10/30	10/30
Voltage drop	[V]	1.5	1.5	1.5
Max. switching current	[A]	0.2	0.2	0.2
Short circuit protection		yes	yes	yes
Protected against polarity reversal		yes	yes	yes
Mechanical operating data				
Housing material		stainless steel	stainless steel	stainless steel
Cable connector/cable end		M8	M12	open wire strands
Cable length L	[cm]	30	30	200
Cable diameter D	[mm]	3.5	3.5	3.5
Cable sheath material		PUR	PUR	PUR
Min. bending radius (dynamic)	[mm]	35	35	35
Min. bending radius (static)	[mm]	17.5	17.5	17.5
Weight	[kg]	0.008	0.019	0.056
Protection class IP (sensor, plugged)		67	67	67
Protection class		II	II	II
Drilling emulsion resistance *		no	no	no

* Tested cutting emulsions: r.rhenus TU 43P, Motorex Swisscool Magnum UX 550 and Oemeta 760 (1008339).

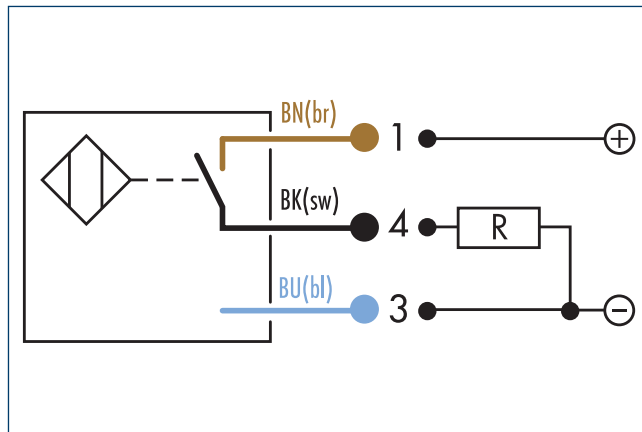
IN 60 main view



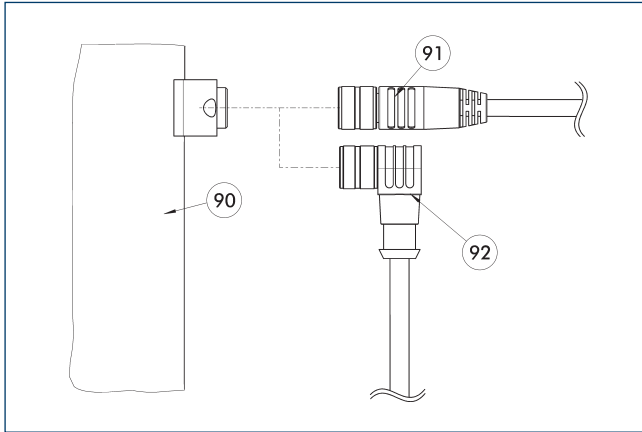
- 65 Cable diameter
- 72 Active sensor surface

- 75 Cable length

Wiring diagram closer PNP



Connection cables



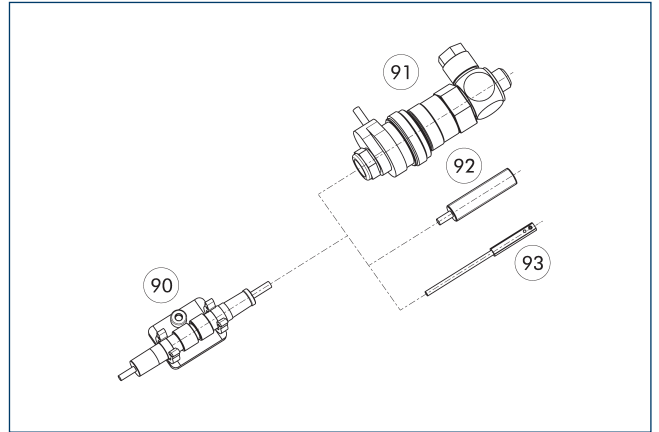
90 Electrical connection component

91 Cable with straight connector
92 Cable with angled connector

Description	ID	Length	Often combined
		[m]	
Connection cables			
KA BG08-L 3P-0300-PNP	0301622	3	●
KA BG08-L 3P-0500-PNP	0301623	5	
KA BG12-L 3P-0500-PNP	30016369	5	
KA BW08-L 3P-0300-PNP	0301594	3	
KA BW08-L 3P-0500-PNP	0301502	5	
KA BW12-L 3P-0300-PNP	0301503	3	
KA BW12-L 3P-0500-PNP	0301507	5	
Cable extension			
KV BG12-SG12 3P-0030-PNP	0301999	0.3	
KV BG12-SG12 3P-0060-PNP	0301998	0.6	
KV BW08-SG08 3P-0030-PNP	0301495	0.3	
KV BW08-SG08 3P-0100-PNP	0301496	1	
KV BW08-SG08 3P-0200-PNP	0301497	2	●
KV BW12-SG12 3P-0030-PNP	0301595	0.3	
KV BW12-SG12 3P-0100-PNP	0301596	1	
KV BW12-SG12 3P-0200-PNP	0301597	2	

① BG stands for a connection cable with a straight female connector and BW for an angled female connector. SG stands for a connection cable with a straight male connector and SW for an angled male connector.

clip for plug/socket



90 CLI plug bracket
91 MV micro valve

92 IN proximity switch
93 Magnetic switch MMS

The CLI clip is used for fastening and strain relief for the plug connectors. For example for the sensor and cable extension connection.

Description	ID	
clip for plug/socket		
CLI-M12	0301464	
CLI-M8	0301463	

IN 65

Inductive Proximity Switches

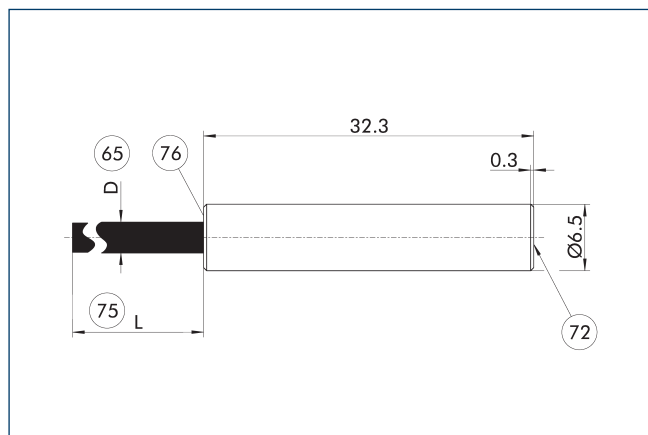


Technical data

Description		IN 65-S-M8	IN 65-S-M12	INK 65-S
ID		0301476	0301576	0301554
Principle of function				
Measuring principle		inductive	inductive	inductive
Switching function		Closer	Closer	Closer
Type of switching		PNP	PNP	PNP
Teach function		no	no	no
General data				
Switching distance	[mm]	1.5	1.5	1.5
Switching hysteresis from the nominal switching distance		< 10%	< 10%	< 10%
Max. switching frequency	[Hz]	1000	1000	1000
Min./max. ambient temperature	[°C]	-25/70	-25/70	-25/70
LED display in sensor		yes	yes	no
Electrical operating data				
Type of voltage		DC	DC	DC
Nominal voltage	[V]	24	24	24
Min./max. operating voltage	[V]	10/30	10/30	10/30
Voltage drop	[V]	1.5	1.5	1.5
Max. switching current	[A]	0.2	0.2	0.2
Short circuit protection		yes	yes	yes
Protected against polarity reversal		yes	yes	yes
Mechanical operating data				
Housing material		stainless steel	stainless steel	stainless steel
Cable connector/cable end		M8	M12	open wire strands
Cable length L	[cm]	30	30	200
Cable diameter D	[mm]	3.5	3.5	3.5
Cable sheath material		PUR	PUR	PUR
Min. bending radius (dynamic)	[mm]	35	35	35
Min. bending radius (static)	[mm]	17.5	17.5	17.5
Weight	[kg]	0.013	0.02	0.052
Protection class IP (sensor, plugged)		67	67	67
Protection class		II	II	II
Drilling emulsion resistance *		no	no	no

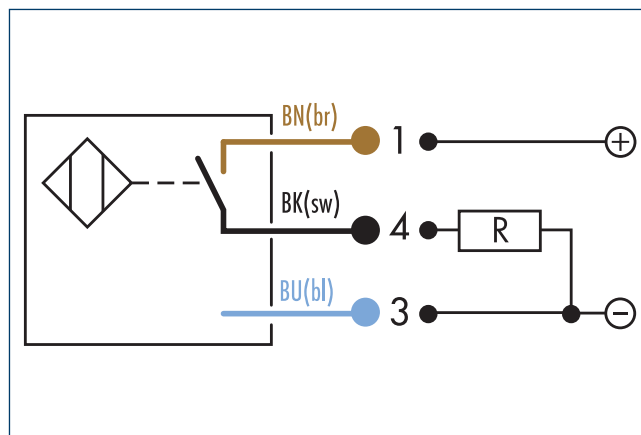
* Tested cutting emulsions: r.rhenus TU 43P, Motorex Swisscool Magnum UX 550 and Oemeta 760 (1008339).

IN 65 main view

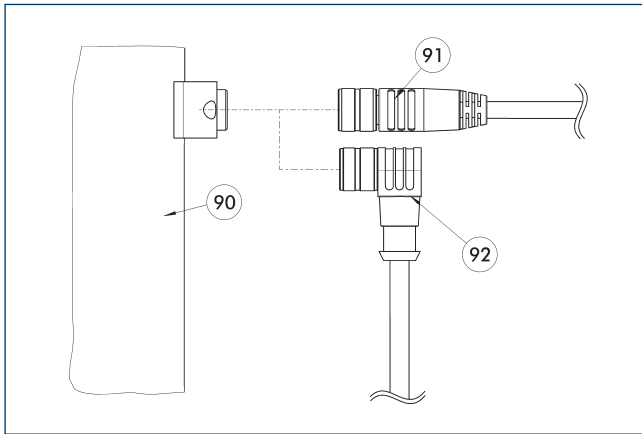


- ⑥⑤ Cable diameter
- ⑦⑤ Cable length
- ⑦② Active sensor surface
- ⑦⑥ LED

Wiring diagram closer PNP



Connection cables



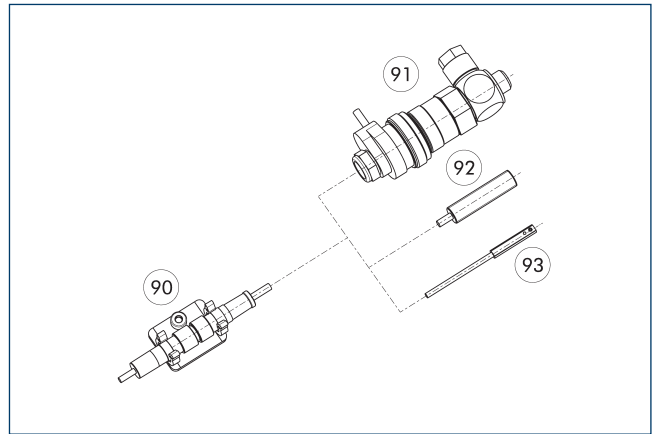
90 Electrical connection component

91 Cable with straight connector
92 Cable with angled connector

Description	ID	Length	Often combined
		[m]	
Connection cables			
KA BG08-L 3P-0300-PNP	0301622	3	●
KA BG08-L 3P-0500-PNP	0301623	5	
KA BG12-L 3P-0500-PNP	30016369	5	
KA BW08-L 3P-0300-PNP	0301594	3	
KA BW08-L 3P-0500-PNP	0301502	5	
KA BW12-L 3P-0300-PNP	0301503	3	
KA BW12-L 3P-0500-PNP	0301507	5	
Cable extension			
KV BG12-SG12 3P-0030-PNP	0301999	0.3	
KV BG12-SG12 3P-0060-PNP	0301998	0.6	
KV BW08-SG08 3P-0030-PNP	0301495	0.3	
KV BW08-SG08 3P-0100-PNP	0301496	1	
KV BW08-SG08 3P-0200-PNP	0301497	2	●
KV BW12-SG12 3P-0030-PNP	0301595	0.3	
KV BW12-SG12 3P-0100-PNP	0301596	1	
KV BW12-SG12 3P-0200-PNP	0301597	2	

① BG stands for a connection cable with a straight female connector and BW for an angled female connector. SG stands for a connection cable with a straight male connector and SW for an angled male connector.

clip for plug/socket



90 CLI plug bracket
91 MV micro valve

92 IN proximity switch
93 Magnetic switch MMS

The CLI clip is used for fastening and strain relief for the plug connectors. For example for the sensor and cable extension connection.

Description	ID	
clip for plug/socket		
CLI-M12	0301464	

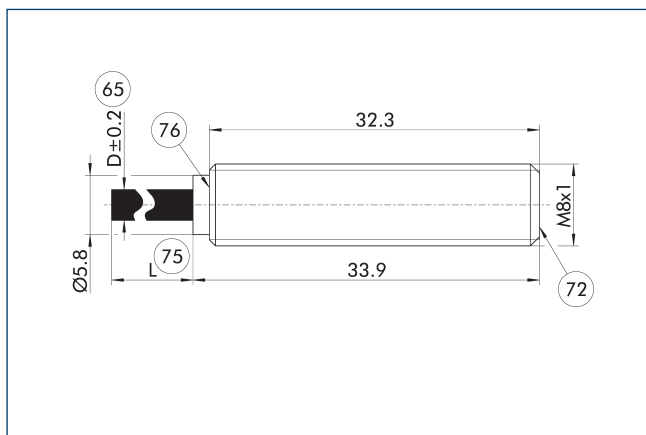


Technical data

Description		IN 80-S-M8	IN 80-S-M12	INK 80-S	IN 80-O-M8	IN 80-O-M12	INK 80-O
ID		0301478	0301578	0301550	0301488	0301588	0301551
Principle of function							
Measuring principle		inductive	inductive	inductive	inductive	inductive	inductive
Switching function		Closer	Closer	Closer	Opener	Opener	Opener
Type of switching		PNP	PNP	PNP	PNP	PNP	PNP
Number of switching points		1	1	1	1	1	1
Teach function		no	no	no	no	no	no
General data							
Switching distance	[mm]	1.5	1.5	1.5	1.5	1.5	1.5
Switching hysteresis from the nominal switching distance		< 15%	< 15%	< 10%	< 15%	< 15%	< 10%
Max. switching frequency	[Hz]	3000	1000	1000	1000	1000	3000
Min./max. ambient temperature	[°C]	-25/70	-25/70	-25/70	-25/70	-25/70	-25/70
LED display in sensor		yes	yes	yes	yes	yes	yes
Electrical operating data							
Type of voltage		DC	DC	DC	DC	DC	DC
Nominal voltage	[V]	24	24	24	24	24	24
Min./max. operating voltage	[V]	10/30	10/30	10/30	10/30	10/30	10/30
Voltage drop	[V]	1.8	1.5	1.5	1.5	1.5	1.5
Max. switching current	[A]	0.15	0.2	0.2	0.2	0.2	0.2
Short circuit protection		yes	yes	yes	yes	yes	yes
Protected against polarity reversal		yes	yes	yes	yes	yes	yes
Mechanical operating data							
Housing material		stainless steel	stainless steel	stainless steel	stainless steel	stainless steel	stainless steel
Cable connector/cable end		M8 connector, 3-pin	M12	open wire strands	M8	M12	open wire strands
Cable length L	[cm]	30	30	200	30	30	200
Cable diameter D	[mm]	3	3.3	3.3	3.3	3.3	3.3
Cable design (wire cross section / number of wires)		3x 0.14mm ²	3x 0.14mm ²	3x 0.14mm ²	3x 0.14mm ²	3x 0.14mm ²	3x 0.14mm ²
Cable sheath material		PUR	PUR	PUR	PUR	PUR	PUR
Min. bending radius (dynamic)	[mm]	30	33	33	33	33	33
Min. bending radius (static)	[mm]	15	16.5	16.5	16.5	16.5	16.5
Weight	[kg]	0.023	0.03	0.073	0.023	0.03	0.062
Protection class IP (sensor, plugged)		67	67	67	67	67	67
Protection class		III	II	II	II	II	II
Drilling emulsion resistance *		yes	yes	yes	yes	yes	yes
Options and their characteristics							
Version with lateral cable outlet		IN 80-S-M8-SA	IN 80-S-M12-SA	INK 80-S-SA			
ID		0301483	0301587	0301566			
LED display in sensor		no	no	no			

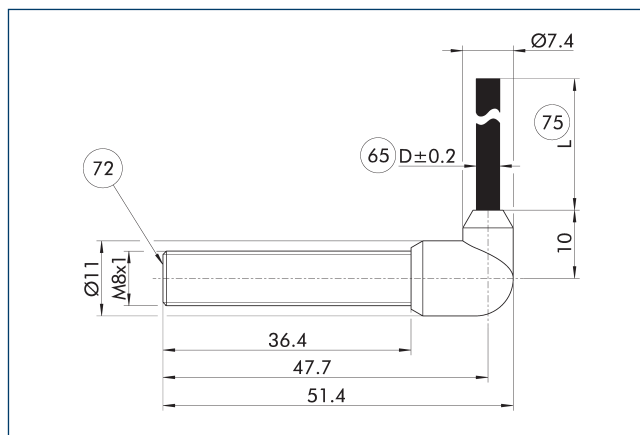
* Tested cutting emulsions: r.rhenus TU 43P, Motorex Swisscool Magnum UX 550 and Oemeta 760 (1008339).

IN 80-M8/M12 main view



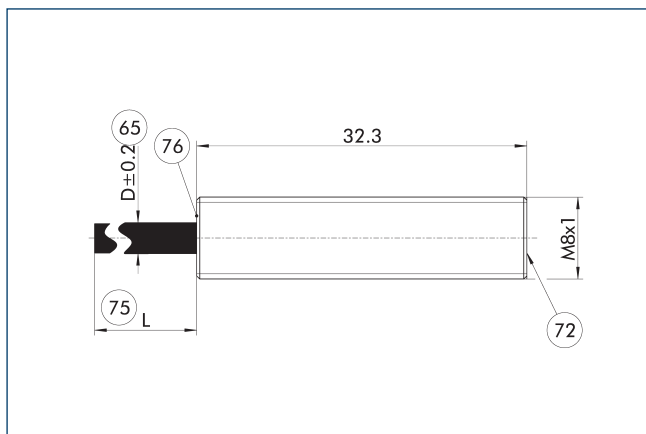
- 65 Cable diameter
- 72 Active sensor surface
- 75 Cable length
- 76 LED

IN(K) 80-SA main view



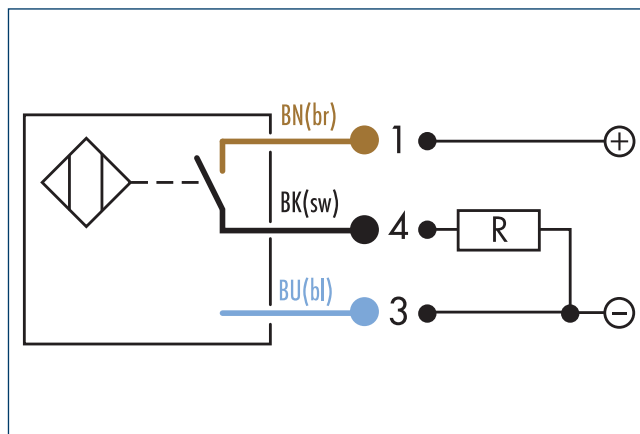
- 72 Active sensor surface
- 75 Cable length
- 65 Cable diameter

INK 80 main view

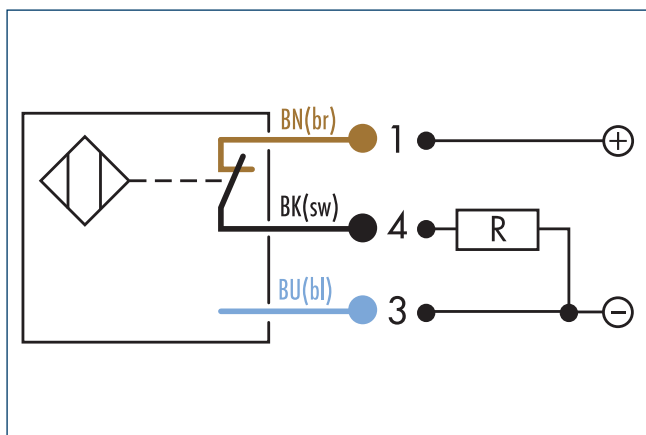


- 65 Cable diameter
- 72 Active sensor surface
- 75 Cable length
- 76 LED

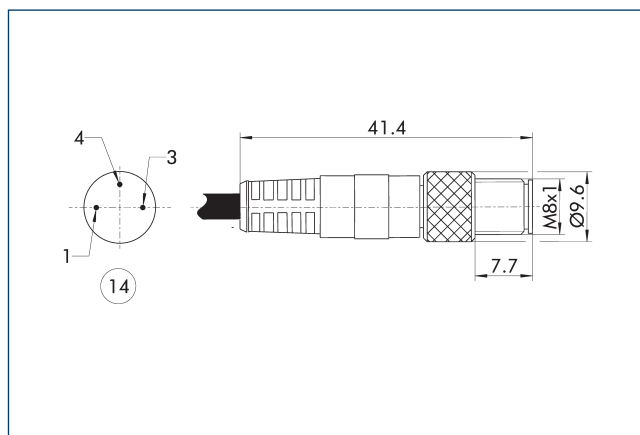
Wiring diagram closer PNP



Wiring diagram opener PNP



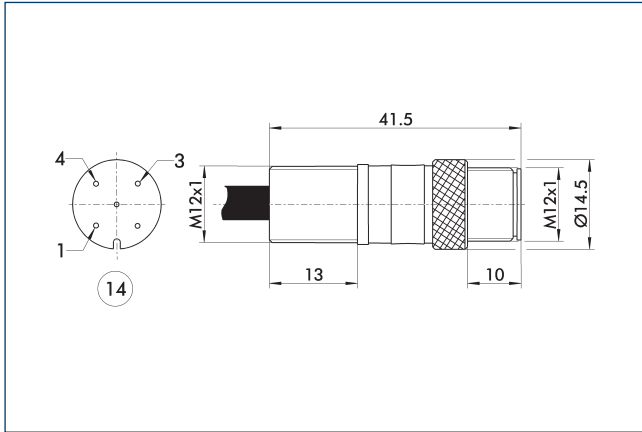
View of M8 connector (3-pin)



- 14 Connector

This view shows the plug connector on the cable end of the sensor.

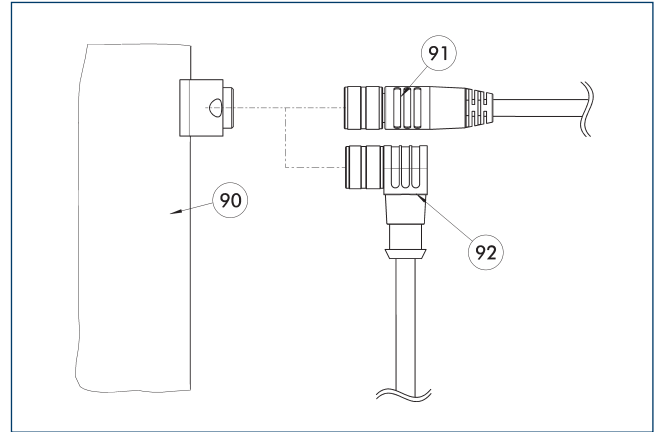
View of M12 connector (4-pin)



14 Connector

This view shows the plug connector on the cable end of the sensor.

Connection cables



90 Electrical connection component

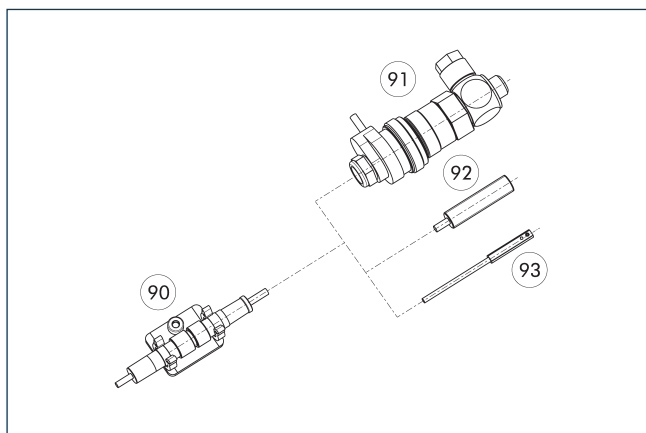
91 Cable with straight connector

92 Cable with angled connector

Description	ID	Length	Often combined
		[m]	
Connection cables			
KA BG08-L 3P-0300-PNP	0301622	3	●
KA BG08-L 3P-0500-PNP	0301623	5	
KA BG12-L 3P-0500-PNP	30016369	5	
KA BW08-L 3P-0300-PNP	0301594	3	
KA BW08-L 3P-0500-PNP	0301502	5	
KA BW12-L 3P-0300-PNP	0301503	3	
KA BW12-L 3P-0500-PNP	0301507	5	
Cable extension			
KV BG12-SG12 3P-0030-PNP	0301999	0.3	
KV BG12-SG12 3P-0060-PNP	0301998	0.6	
KV BW08-SG08 3P-0030-PNP	0301495	0.3	
KV BW08-SG08 3P-0100-PNP	0301496	1	
KV BW08-SG08 3P-0200-PNP	0301497	2	●
KV BW12-SG12 3P-0030-PNP	0301595	0.3	
KV BW12-SG12 3P-0100-PNP	0301596	1	
KV BW12-SG12 3P-0200-PNP	0301597	2	

① BG stands for a connection cable with a straight female connector and BW for an angled female connector. SG stands for a connection cable with a straight male connector and SW for an angled male connector.

clip for plug/socket



- 90 CLI plug bracket 92 IN proximity switch
 91 MV micro valve 93 Magnetic switch MMS

The CLI clip is used for fastening and strain relief for the plug connectors. For example for the sensor and cable extension connection.

Description	ID	
clip for plug/socket		
CLI-M12	0301464	
CLI-M8	0301463	

IN 80-SL

Inductive Proximity Switches

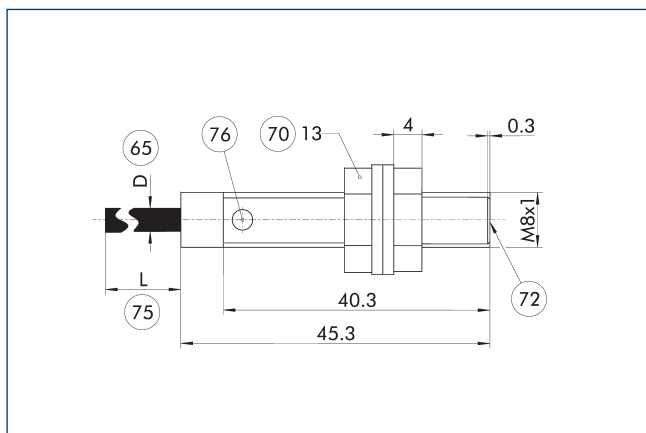


Technical data

Description		IN 80-SL-M12	INK 80-SL
ID		0301529	0301579
Principle of function			
Measuring principle		inductive	inductive
Switching function		Closer	Closer
Type of switching		PNP	PNP
Teach function		no	no
General data			
Switching distance	[mm]	3	3
Switching hysteresis from the nominal switching distance		< 10%	< 10%
Max. switching frequency	[Hz]	500	500
Min./max. ambient temperature	[°C]	-25/70	-25/70
LED display in sensor		yes	yes
Electrical operating data			
Type of voltage		DC	DC
Nominal voltage	[V]	24	24
Min./max. operating voltage	[V]	10/30	10/30
Voltage drop	[V]	1.5	1.5
Max. switching current	[A]	0.2	0.2
Short circuit protection		yes	yes
Protected against polarity reversal		yes	yes
Mechanical operating data			
Housing material		Brass, nickel-plated	Brass, nickel-plated
Cable connector/cable end		M12	open wire strands
Cable length L	[cm]	30	300
Cable diameter D	[mm]	3.5	3.5
Cable sheath material		PUR	PUR
Min. bending radius (dynamic)	[mm]	35	35
Min. bending radius (static)	[mm]	17.5	17.5
Weight	[kg]	0.031	0.085
Protection class IP (sensor, plugged)		67	67
Protection class		II	II
Drilling emulsion resistance *		yes	yes

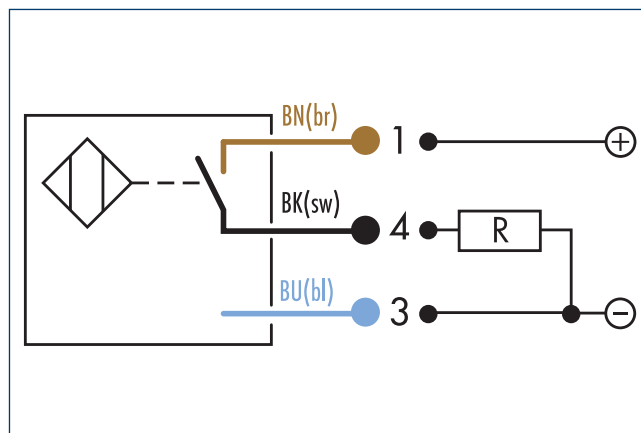
* Tested cutting emulsions: r.rhenus TU 43P, Motorex Swisscool Magnum UX 550 and Oemeta 760 (1008339).

IN 80-SL main view

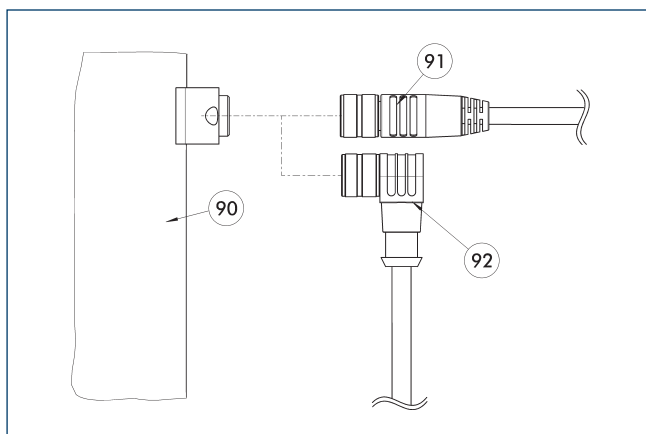


- ⑥⑤ Cable diameter
- ⑦⑤ Cable length
- ⑦① Wrench size
- ⑦⑥ LED
- ⑦② Active sensor surface

Wiring diagram closer PNP



Connection cables

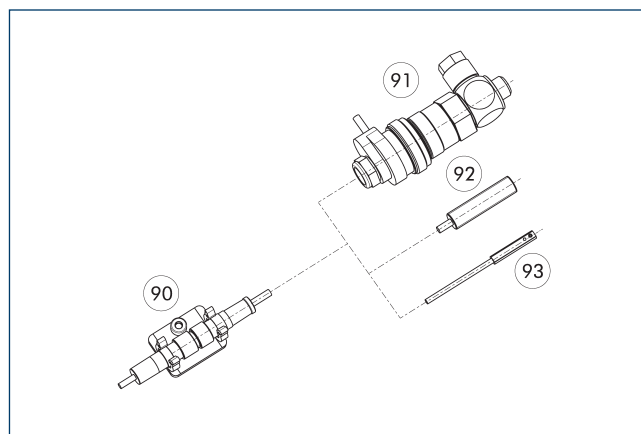


- ⑨① Electrical connection component
- ⑨① Cable with straight connector
- ⑨② Cable with angled connector

Description	ID	Length [m]
Connection cables		
KA BG12-L 3P-0500-PNP	30016369	5
KA BW12-L 3P-0300-PNP	0301503	3
KA BW12-L 3P-0500-PNP	0301507	5
Cable extension		
KV BG12-SG12 3P-0030-PNP	0301999	0.3
KV BG12-SG12 3P-0060-PNP	0301998	0.6
KV BW12-SG12 3P-0030-PNP	0301595	0.3
KV BW12-SG12 3P-0100-PNP	0301596	1
KV BW12-SG12 3P-0200-PNP	0301597	2

① BG stands for a connection cable with a straight female connector and BW for an angled female connector. SG stands for a connection cable with a straight male connector and SW for an angled male connector.

clip for plug/socket



- ⑨① CLI plug bracket
- ⑨① MV micro valve
- ⑨② IN proximity switch
- ⑨③ Magnetic switch MMS

The CLI clip is used for fastening and strain relief for the plug connectors. For example for the sensor and cable extension connection.

Description	ID
clip for plug/socket	
CLI-M12	0301464

IN 80-B/-C

Inductive Proximity Switches

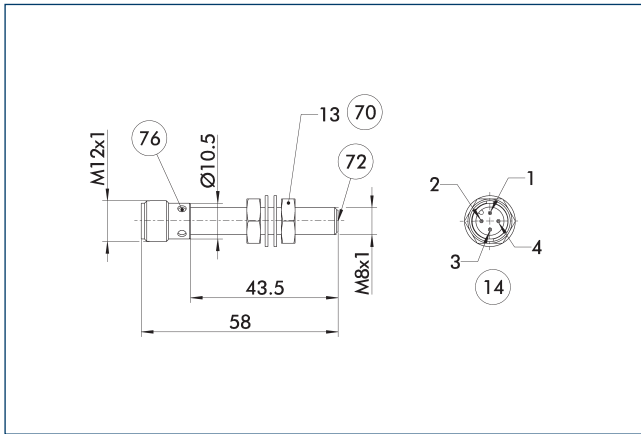


Technical data

Description		IN-B 80-S-M12	IN-C 80-S-M8-PNP
ID		0301479	0301475
Principle of function			
Measuring principle		inductive	inductive
Switching function		Closer	Closer
Type of switching		PNP	PNP
Teach function		no	no
General data			
Switching distance	[mm]	1.5	1.5
Switching hysteresis from the nominal switching distance		< 15%	< 15%
Max. switching frequency	[Hz]	1000	3000
Min./max. ambient temperature	[°C]	-25/70	-25/70
LED display in sensor		yes	yes
Electrical operating data			
Type of voltage		DC	DC
Nominal voltage	[V]	24	24
Min./max. operating voltage	[V]	10/30	10/30
Voltage drop	[V]	1.5	1.5
Max. switching current	[A]	0.2	0.1
Short circuit protection		yes	yes
Protected against polarity reversal		yes	yes
Mechanical operating data			
Housing material		stainless steel	stainless steel
Cable connector/cable end		M12	M8
Weight	[kg]	0.02	0.013
Protection class IP (sensor, plugged)		67	68
Protection class			II
Drilling emulsion resistance *		no	no

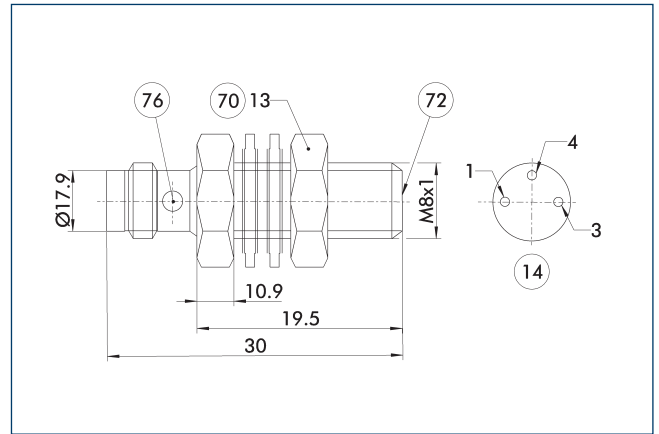
* Tested cutting emulsions: r.rhenus TU 43P, Motorex Swisscool Magnum UX 550 and Oemeta 760 (1008339).

IN-B 80 main view



- ⑭ Connector
- ⑦② Active sensor surface
- ⑦⑥ Wrench size
- ⑦⑥ LED

IN-C 80 main view

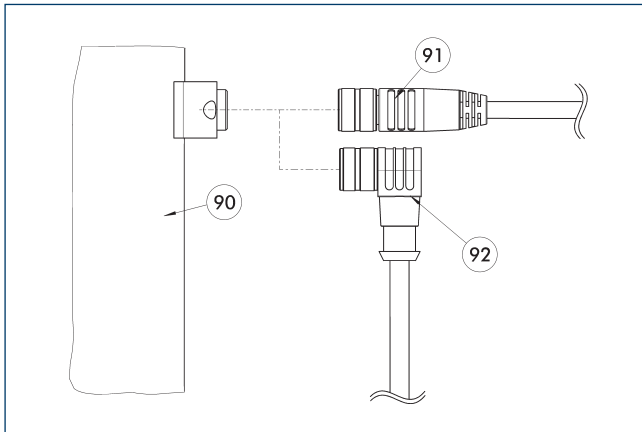


- ⑭ Connector
- ⑦② Active sensor surface
- ⑦⑥ Wrench size
- ⑦⑥ LED

IN 80-B/-C

Inductive Proximity Switches

Connection cables



⑨⑩ Electrical connection component

⑨① Cable with straight connector

⑨② Cable with angled connector

Description	ID	Length	Often combined
		[m]	
Connection cables			
KA BG08-L 3P-0300-PNP	0301622	3	●
KA BG08-L 3P-0500-PNP	0301623	5	
KA BG12-L 3P-0500-PNP	30016369	5	
KA BW08-L 3P-0300-PNP	0301594	3	
KA BW08-L 3P-0500-PNP	0301502	5	
KA BW12-L 3P-0300-PNP	0301503	3	
KA BW12-L 3P-0500-PNP	0301507	5	
Cable extension			
KV BG12-SG12 3P-0030-PNP	0301999	0.3	
KV BG12-SG12 3P-0060-PNP	0301998	0.6	
KV BW08-SG08 3P-0030-PNP	0301495	0.3	
KV BW08-SG08 3P-0100-PNP	0301496	1	
KV BW08-SG08 3P-0200-PNP	0301497	2	●
KV BW12-SG12 3P-0030-PNP	0301595	0.3	
KV BW12-SG12 3P-0100-PNP	0301596	1	
KV BW12-SG12 3P-0200-PNP	0301597	2	

① BG stands for a connection cable with a straight female connector and BW for an angled female connector. SG stands for a connection cable with a straight male connector and SW for an angled male connector.



SCHUNK GmbH & Co. KG
Spann- und Greiftechnik

Bahnhofstr. 106 - 134
D-74348 Lauffen/Neckar
Tel. +49-7133-103-0
Fax +49-7133-103-2399
info@de.schunk.com
schunk.com

Folgen Sie uns | *Follow us*

